

MICRO SWITCH

A DIVISION OF MINNEAPOLIS-HONEYWELL REGULATOR COMPANY
PROSPER, ILLINOIS

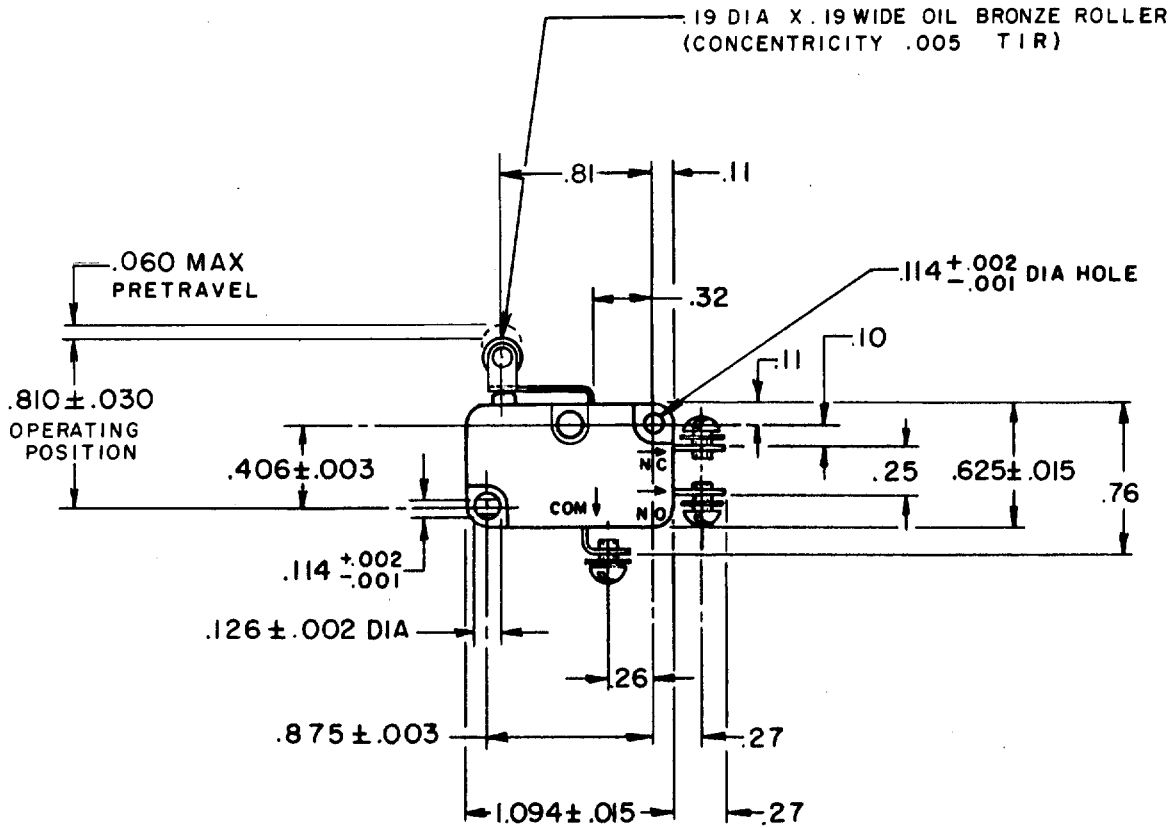
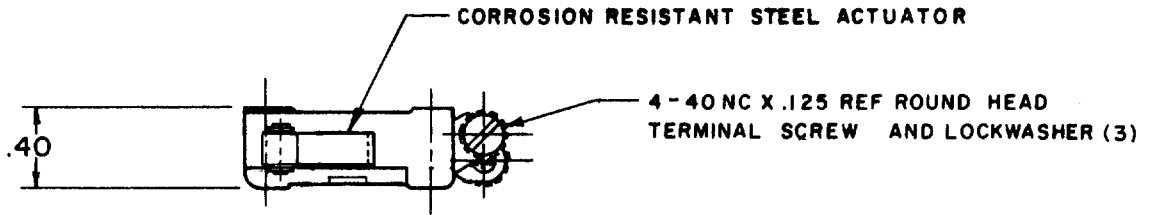
FED. MFR. CODE 91929

SWITCH-BASIC

CATALOG LISTING

V3L - 3

CQ-A0300



THIS DRAWING COVERS A PROPRIETARY ITEM AND IS THE PROPERTY OF MICRO SWITCH, A DIVISION OF MINNEAPOLIS-HONEYWELL REGULATOR CO. THIS DRAWING IS NOT TO BE COPIED OR USED WITHOUT THE APPROVAL OF MICRO SWITCH.

CHARACTERISTICS

OPERATING FORCE ----- 14 OZ MAX
RELEASE FORCE ----- 3 OZ MIN
DIFFERENTIAL TRAVEL ----- .016 MAX
OVERTRAVEL ----- .040 MIN
RELEASE TRAVEL ----- .007 MIN

ELECTRICAL DATA

CONTACT ARRANGEMENT
S P D T

L83
15.1A 1/2HP 125 OR 250 VAC
1/2A 125 VDC, 1/4A 250 VDC
5A 125 VAC "L"



SCALE FULL

DO NOT SCALE PRINT

UNLESS OTHERWISE SPECIFIED

DIMENSIONS ARE IN INCHES

TOLERANCES ARE:

ONE PLACE (.0)	±.030
TWO PLACE (.00)	±.015
THREE PLACE (.000)	±.005
ANGLES	±

WEIGHT

V3L-3

M

DRAWING NUMBER

ISSUE
X 2
X 3
X 4
X 5
X 6
X 7
X 8
X 9
X 10

REPLACES

RELEASE NO. SR10083

CHECK

REVISIONS

A	CO 16973	6 CH	16 MAY 62
B	CO 20189	M B F	7 SEP 65
C	CO 21900	L E B	14 AUG 67
D	CO 24941	M B S	4 DEC 68
E	CO 28075	M B S	27 AUG 69
F	CO 31509	R E R	22 JAN 73
G	CO 32395	GL H	14 AUG 73
H	CO 36987	SMA	1 OCT 85
J	CO 76445	DCS	5 JAN 94

CHECK

L S D 14 FEB 62

FO-30378