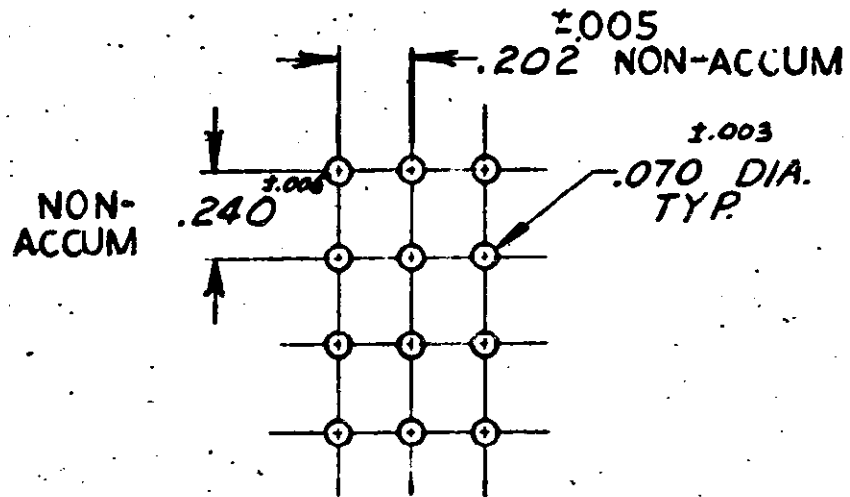
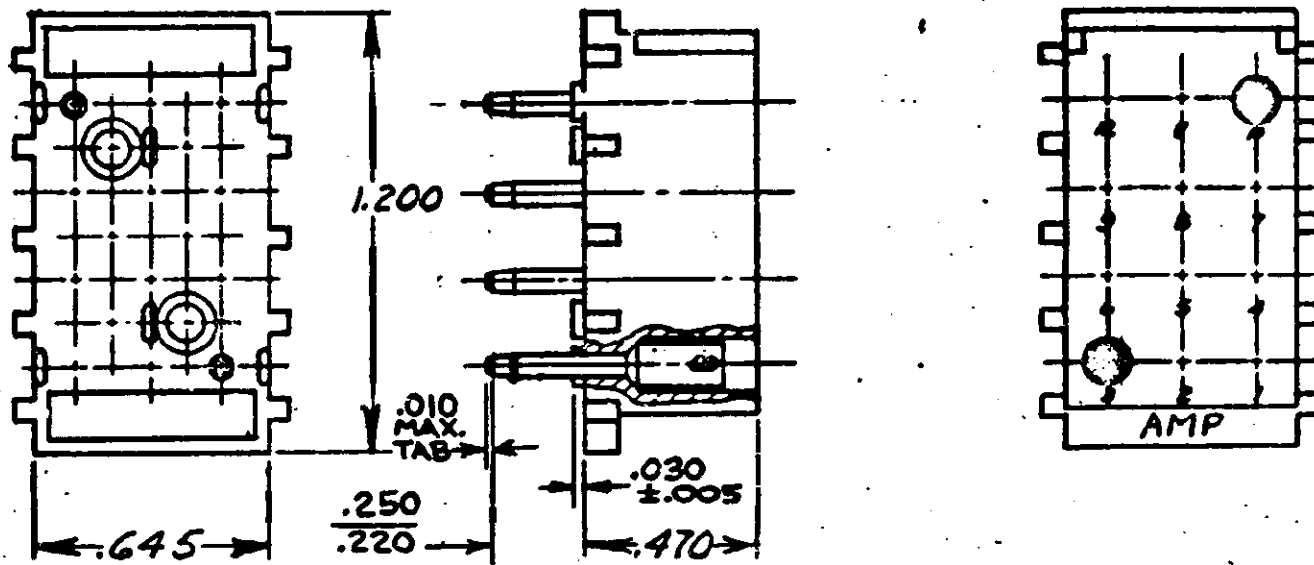


3. DIMENSION SHOWN REPRESENT PRODUCT IN DRY CONDITION. ADDITIONAL 2% GROWTH DUE TO END USE LOCATION MOISTURE ABSORPTION MAY OCCUR AND SHOULD BE ACCOUNTED FOR.



RECOMMENDED LAYOUT FOR .125 THICK P.C. BOARD

1. MATES WITH HOUSING 480278
2. PARTS COMPLY WITH AMP SOLDERABILITY SPEC. NO. 109-11-3

9-350578-2	NYLON - BLACK	PHOS BRZ - GOLD
8-350578-2	- GRAY	-
7-350578-2	- VIOLET	-
6-350578-2	- BLUE	-
5-350578-2	- GREEN	-
4-350578-2	- YELLOW	-
3-350578-2	- ORANGE	-
2-350578-2	- RED	-
1-350578-2	- BROWN	-
350578-2	- NATURAL	- GOLD
9-350578-1	- BLACK	- PRE-TIN
8-350578-1	- GRAY	-
7-350578-1	- VIOLET	-
6-350578-1	- BLUE	-
5-350578-1	- GREEN	-
4-350578-1	- YELLOW	-
3-350578-1	- ORANGE	-
2-350578-1	- RED	-
1-350578-1	- BROWN	-
350578-1	NYLON - NATURAL	PHOS BRZ - PRE-TIN

ASSEMBLY NO. HSG. MATL & COLOR PIN MATL & FINISH

F2	REVISED PER ECR-21-117185	PJ	VS	20OCT2021
F1	RESTORED	PK	RS	4/1/85
F	REV. PER M-7376	SS	GV	7/20/83
E	REVISED M-4161	MF	DA	4/13/77
D	ECN M-3871	PK	DA	7/76
C	ECN M-3452	GY	DA	1/1/76
B	RELEASED FOR PROD	DA	DA	1/1/76
A	ECN M-3156	DA	DA	1/1/76
-	PER ECN M-2996	DA	DA	1/1/76
LTR	REVISION RECORD	DR	CHK	DATE

350578	REQUIRED PER ASSEMBLY
	DESCRIPTION

© 1973 BY AMP INCORPORATED. ALL RIGHTS RESERVED. AMP PRODUCTS COVERED BY PATENTS AND/OR PATENTS PENDING.

DR: 6-6-73
9. Edwards

CHK: 6-11-73
P. Oramer

DE: 6/1/73
M. P. H. H. H. H.

MP: 6/1/73
M. P. H. H. H. H.

MATERIAL AND FINISH: SEE TABLE

WIRE - RANGE - INSULATION: H - H

TOLERANCE EXCEPT AS NOTED: ±.013 ±.001

SCALE: 1

LOC: CM

NO: B

NO: 350578

NAME: 12 CIRCUIT MATE-N-LOK P.C. BOARD SOCKET HEADER

CLASS: H

TYPE: H

CUSTOMER COPY REFERENCE ONLY

TE Connectivity

DIMENSIONS IN INCHES. DO NOT SCALE PRINT.