

1937650-6 ✓ ACTIVE

SCHRACK | SCHRACK Power PCB Relay RTX

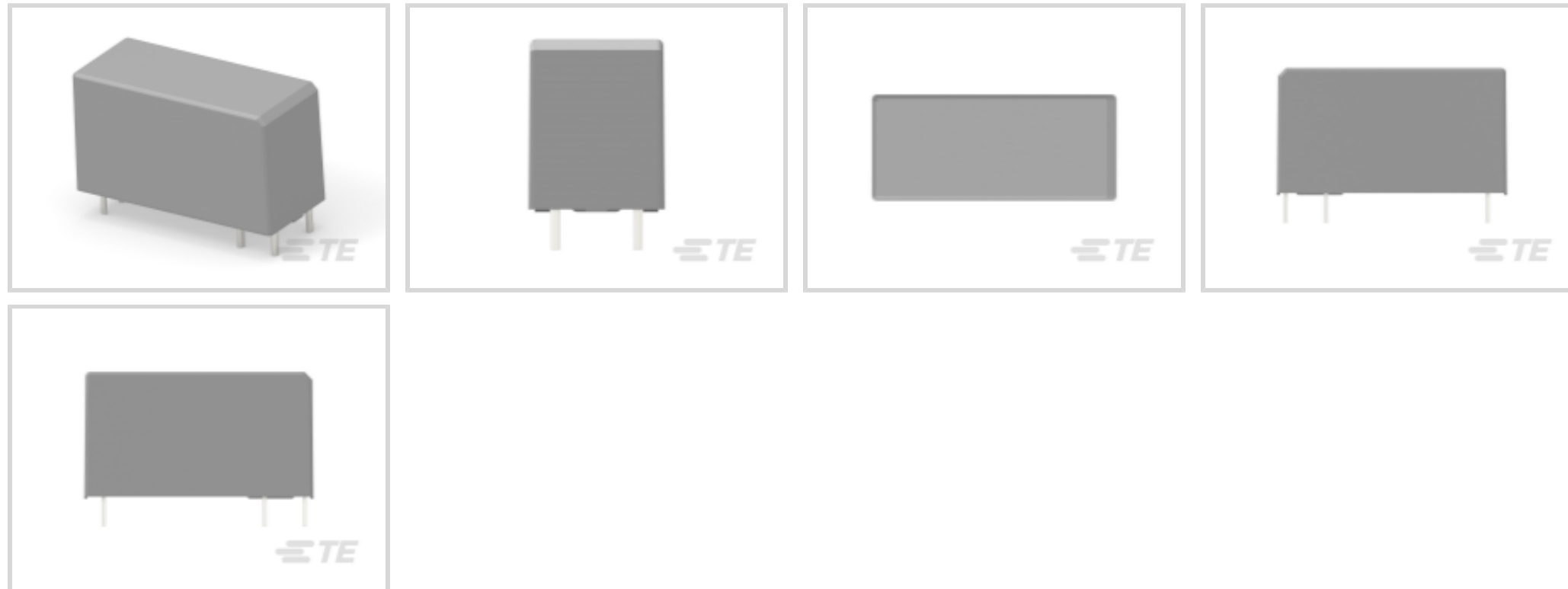
TE Internal #: 1937650-6

Power Relays, Standard, Bistable, 1 Coil, Polarized, 650 mW Coil Power Rating DC, 890 Ω Coil Resistance, SCHRACK Power PCB Relay RTX

[View on TE.com >](#)



Relays, Contactors & Switches > Relays > Power Relays > PCB Power Relay: Bystable, Polarized



Power Relay Type: **Standard**

Coil Magnetic System: **Bistable, 1 Coil, Polarized**

Coil Power Rating DC: **650 mW**

Coil Resistance: **890 Ω**

Coil Special Features: **UL Coil Insulation Class F**

[All PCB Power Relay: Bystable, Polarized \(9\)](#)

Features

Product Type Features

| | |
|------------------|----------|
| Power Relay Type | Standard |
|------------------|----------|

Electrical Characteristics

| | |
|--|-----------------------------|
| Insulation Initial Dielectric Between Coil & Contact Class | 4000 V |
| Insulation Initial Dielectric Between Open Contacts | 1250 Vrms |
| Contact Limiting Making Current | 16 A |
| Contact Limiting Short-Time Current | 16 A |
| Contact Limiting Continuous Current | 16 A |
| Insulation Creepage Class | 5.5 – 8 mm |
| Coil Power Rating Class | 600 – 800 mW |
| Insulation Initial Dielectric Between Contacts & Coil | 5000 Vrms |
| Insulation Creepage Between Contact & Coil | 6 mm [.236 in] |
| Contact Limiting Breaking Current | 16 A |
| Coil Magnetic System | Bistable, 1 Coil, Polarized |



| | |
|------------------------|----------------------------|
| Coil Power Rating DC | 650 mW |
| Coil Resistance | 890 Ω |
| Coil Special Features | UL Coil Insulation Class F |
| Coil Voltage Rating | 24 VDC |
| Contact Voltage Rating | 250 VAC |

Body Features

| | |
|-----------------------------|-------------------------------------|
| Insulation Special Features | Tracking Index of Relay Base PTI250 |
| Product Weight | 11 g[.388 oz] |

Contact Features

| | |
|------------------------------|--------------------|
| Contact Special Features | Flip-Flop Contacts |
| Contact Arrangement | 1 Form A (NO) |
| Contact Current Class | 10 – 20 A, 16 A |
| Contact Current Rating (Max) | 16 A |
| Contact Material | W + AgSnO |
| Contact Number of Poles | 1 |
| Relay Terminal Type | PCB-THT |

Mechanical Attachment

| | |
|---------------------|-----------------------|
| Relay Mounting Type | Printed Circuit Board |
|---------------------|-----------------------|

Dimensions

| | |
|---|-------------------|
| Length Class (Mechanical) | 25 – 30 mm |
| Insulation Clearance Class | 5 – 8 mm |
| Height Class (Mechanical) | 15 – 16 mm |
| Insulation Clearance Between Contact & Coil | 6 mm[.236 in] |
| Width Class (Mechanical) | 12 – 16 mm |
| Product Width | 12.7 mm[.5 in] |
| Product Length | 29.1 mm[1.146 in] |
| Product Height | 16 mm[.63 in] |

Usage Conditions

| | |
|---|---------------|
| Environmental Ambient Temperature Class | 50 – 70 °C |
| Environmental Ambient Temperature (Max) | 70 °C[158 °F] |

Packaging Features

| | |
|------------------|--------------------|
| Packaging Method | Box & Tube, Carton |
|------------------|--------------------|



Product Compliance

[For compliance documentation, visit the product page on TE.com>](#)

| | |
|---|---|
| EU RoHS Directive 2011/65/EU | Compliant |
| EU ELV Directive 2000/53/EC | Compliant |
| China RoHS 2 Directive MIIT Order No 32, 2016 | No Restricted Materials Above Threshold |
| EU REACH Regulation (EC) No. 1907/2006 | Current ECHA Candidate List: JUNE 2023 (235) Candidate List Declared Against: JUNE 2023 (235) Does not contain REACH SVHC |
| Halogen Content | Not Low Halogen - contains Br or Cl > 900 ppm. |
| Solder Process Capability | Wave solder capable to 265°C |

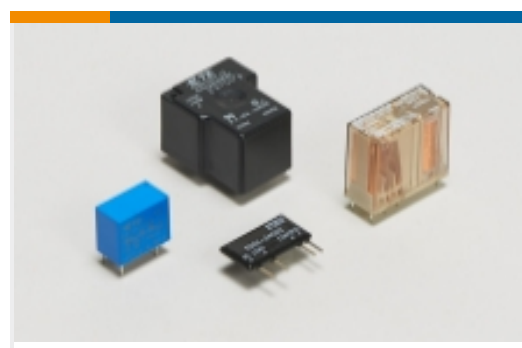
Product Compliance Disclaimer

This information is provided based on reasonable inquiry of our suppliers and represents our current actual knowledge based on the information they provided. This information is subject to change. The part numbers that TE has identified as EU RoHS compliant have a maximum concentration of 0.1% by weight in homogenous materials for lead, hexavalent chromium, mercury, PBB, PBDE, DBP, BBP, DEHP, DIBP, and 0.01% for cadmium, or qualify for an exemption to these limits as defined in the Annexes of Directive 2011/65/EU (RoHS2). Finished electrical and electronic equipment products will be CE marked as required by Directive 2011/65/EU. Components may not be CE marked. Additionally, the part numbers that TE has identified as EU ELV compliant have a maximum concentration of 0.1% by weight in homogenous materials for lead, hexavalent chromium, and mercury, and 0.01% for cadmium, or qualify for an exemption to these limits as defined in the Annexes of Directive 2000/53/EC (ELV). Regarding the REACH Regulation, the information TE provides on SVHC in articles for this part number is based on the latest European Chemicals Agency (ECHA) 'Guidance on requirements for substances in articles' posted at this URL: <https://echa.europa.eu/guidance-documents/guidance-on-reach>

Compatible Parts

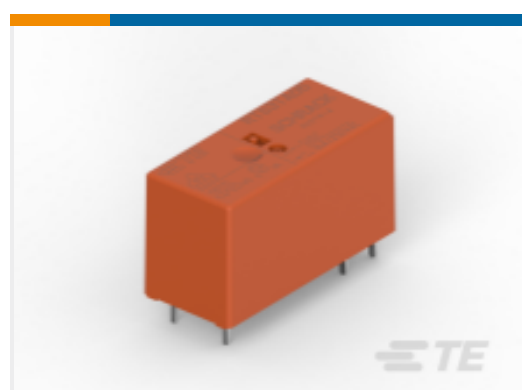


Also in the Series | [SCHRACK Power PCB Relay RTX](#)



Power Relays(9)

Customers Also Bought

TE Part #1415898-4
PCB Power Relay: 16 Amp, InrushTE Part #7-1393239-5
RT31L024TE Part #1-1461116-5
OJT-SH-124DM,000TE Part #1937650-5
RTX3-1AT-B012TE Part #1-1415898-5
RTS3TA05TE Part #1-1461116-2
OJT-SH-109DM,000

Documents

CAD Files

3D PDF

3D

Customer View Model

[ENG_CVM_CVM_1937650-6_A.2d_dxf.zip](#)

English

Customer View Model

[ENG_CVM_CVM_1937650-6_A.3d_igs.zip](#)

English

Customer View Model

[ENG_CVM_CVM_1937650-6_A.3d_stp.zip](#)

English

By downloading the CAD file I accept and agree to the [Terms and Conditions](#) of use.

Datasheets & Catalog Pages

[Power PCB Relay RTX](#)

English



Agency Approvals

UL

English