

# Accessories

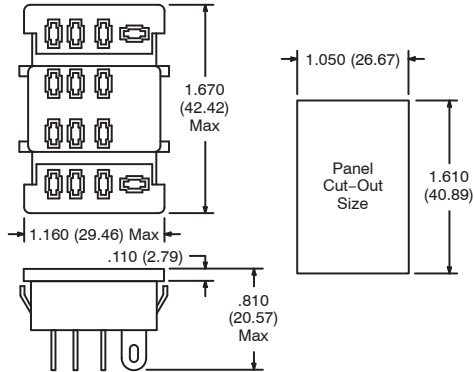
## RLY9157

### Features

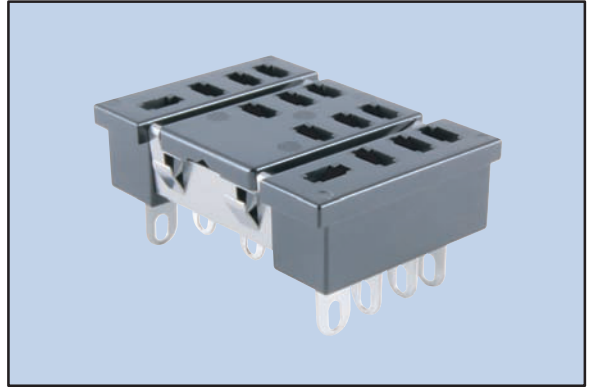
- Panel Mount
- Solder Terminals
- Accepts .187" Blade Terminals
- 4PDT Applications

### Electrical Rating:

300 Volts, 10 Amps



## 14-Pin Blade Socket



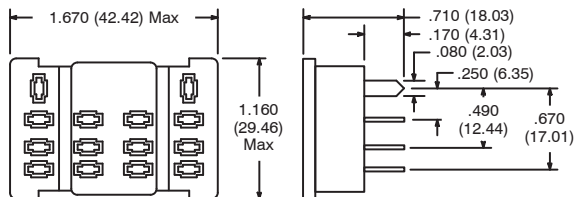
## RLY9158

### Features

- PC Board Mount
- Solder Terminals
- Accepts .187" Blade Terminals
- 4PDT Applications

### Electrical Rating:

300 Volts, 10 Amps



## 14-Pin Blade Socket

