

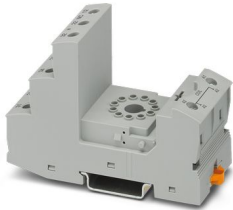
# RIF-3-BSC/3X21 - Relay base



2900936

<https://www.phoenixcontact.com/us/products/2900936>

Please be informed that the data shown in this PDF document is generated from our online catalog. Please find the complete data in the user documentation. Our general terms of use for downloads are valid.



RIF-3... relay base, for octal relay with 3 changeover contacts, screw connection, plug-in option for input/interference suppression modules, for mounting on NS 35/7,5

## Commercial data

|                                      |                     |
|--------------------------------------|---------------------|
| Item number                          | 2900936             |
| Packing unit                         | 1 pc                |
| Minimum order quantity               | 10 pc               |
| Sales key                            | C465                |
| Product key                          | CK6514              |
| Catalog page                         | Page 307 (C-5-2019) |
| GTIN                                 | 4046356733038       |
| Weight per piece (including packing) | 89.29 g             |
| Weight per piece (excluding packing) | 86.71 g             |
| Customs tariff number                | 85366990            |
| Country of origin                    | CN                  |

# RIF-3-BSC/3X21 - Relay base



2900936

<https://www.phoenixcontact.com/us/products/2900936>

## Technical data

### Product properties

|                |                  |
|----------------|------------------|
| Product type   | Relay socket     |
| Product family | RIFLINE complete |

### Electrical properties

|                       |  |
|-----------------------|--|
| Nominal voltage $U_N$ | 250 V AC/DC  |
| Nominal current $I_N$ | max. 10.5 A (Depends on application/assembly)      |
| Protective circuit    | depending on the selected input/suppressor modules |

### Connection data

|   |   |
|---|---|
| Connection method   | Screw connection  |
| Stripping length  | 8 mm  |
| Conductor cross section rigid   | 0.5 mm <sup>2</sup> ... 4 mm <sup>2</sup>   |
| Conductor cross-section rigid (2 conductors with same cross section)    | 0.5 mm <sup>2</sup> ... 2.5 mm <sup>2</sup>   |
| Conductor cross section flexible  | 0.5 mm <sup>2</sup> ... 4 mm <sup>2</sup><br>0.5 mm <sup>2</sup> ... 4 mm <sup>2</sup> (Ferrule with plastic sleeve)          |
| Conductor cross section flexible (2 conductors with same cross section) | 0.5 mm <sup>2</sup> ... 2.5 mm <sup>2</sup><br>0.5 mm <sup>2</sup> ... 1.5 mm <sup>2</sup> (TWIN ferrule with plastic sleeve) |
| Conductor cross section AWG   | 20 ... 10 (solid)<br>20 ... 12 (flexible)   |
| Tightening torque   | 0.5 Nm ... 0.6 Nm   |

### Dimensions

|                         |                                |
|-------------------------|--------------------------------|
| Width                   | 40 mm                          |
| Height                  | 96 mm                          |
| Depth Retaining bracket | 90 mm (with retaining bracket) |

### Material specifications

|  |                 |
|--|-----------------|
| Color                                  | gray (RAL 7042) |
| Flammability rating according to UL 94 | V2 (Housing)    |

### Environmental and real-life conditions

#### Ambient conditions

|   |  |
|---|--|
| Ambient temperature (operation)         | -40 °C ... 85 °C (Depends on application/assembly) |
| Ambient temperature (storage/transport) | -40 °C ... 85 °C                                   |

### Approvals

#### Corrosive gas test

|                |   |
|----------------|---|
| Identification | ISA-S71.04. G3 Harsh Group<br>EN 60068-2-60 |
|----------------|---|

# RIF-3-BSC/3X21 - Relay base



2900936

<https://www.phoenixcontact.com/us/products/2900936>

## Mounting

|                   |                   |
|-------------------|-------------------|
| Mounting type     | DIN rail mounting |
| Mounting position | any               |

# RIF-3-BSC/3X21 - Relay base



2900936

<https://www.phoenixcontact.com/us/products/2900936>

## Approvals

To download certificates, visit the product detail page: <https://www.phoenixcontact.com/us/products/2900936>



**CSA**

Approval ID: 76787



**UL Recognized**

Approval ID: FILE E 113228



**EAC**

Approval ID: RU D-DE.B\*00573/18



**DNV GL**

Approval ID: TAA000018V

# RIF-3-BSC/3X21 - Relay base



2900936

<https://www.phoenixcontact.com/us/products/2900936>

## Classifications

### ECLASS

|             |          |
|-------------|----------|
| ECLASS-11.0 | 27371603 |
| ECLASS-12.0 | 27371603 |
| ECLASS-13.0 | 27371603 |

### ETIM

|          |          |
|----------|----------|
| ETIM 9.0 | EC001456 |
|----------|----------|

### UNSPSC

|             |          |
|-------------|----------|
| UNSPSC 21.0 | 39122300 |
|-------------|----------|

# RIF-3-BSC/3X21 - Relay base



2900936

<https://www.phoenixcontact.com/us/products/2900936>

## Environmental product compliance

|            |   |
|------------|---|
| China RoHS | Environmentally friendly use period: unlimited = EFUP-e |
|            | No hazardous substances above threshold values          |

# RIF-3-BSC/3X21 - Relay base

2900936

<https://www.phoenixcontact.com/us/products/2900936>



## Mandatory accessories

### REL-OR3/LDP-24DC/3X21 - Single relay

2903693

<https://www.phoenixcontact.com/us/products/2903693>



Plug-in octal relays with power contacts, 3 changeover contacts, test button, freewheeling diode, mechanical switching position indicator, polarity: A1+, A2-, input voltage: 24 V DC

---

### REL-OR3/L- 24AC/3X21 - Single relay

2903694

<https://www.phoenixcontact.com/us/products/2903694>



Plug-in octal relays with power contacts, 3 changeover contacts, test button, mechanical switching position indicator, coil voltage: 24 V AC

# RIF-3-BSC/3X21 - Relay base

2900936

<https://www.phoenixcontact.com/us/products/2900936>



## REL-OR3/L-120AC/3X21 - Single relay

2903695

<https://www.phoenixcontact.com/us/products/2903695>



Plug-in octal relays with power contacts, 3 changeover contacts, test button, mechanical switching position indicator, coil voltage: 120 V AC

---

## REL-OR3/L-230AC/3X21 - Single relay

2903696

<https://www.phoenixcontact.com/us/products/2903696>



Plug-in octal relays with power contacts, 3 changeover contacts, test button, mechanical switching position indicator, input voltage: 230 V AC

---

## Accessories



## RIF-3-BSC/3X21 - Relay base

2900936

<https://www.phoenixcontact.com/us/products/2900936>



## FBS 2-6 - Plug-in bridge

3030336

<https://www.phoenixcontact.com/us/products/3030336>



Plug-in bridge, pitch: 6.2 mm, number of positions: 2, color: red

---

## FBS 2-6 BU - Plug-in bridge

3036932

<https://www.phoenixcontact.com/us/products/3036932>



Plug-in bridge, pitch: 6.2 mm, number of positions: 2, color: blue

## RIF-3-BSC/3X21 - Relay base

2900936

<https://www.phoenixcontact.com/us/products/2900936>



## FBS 2-6 GY - Plug-in bridge

3032237

<https://www.phoenixcontact.com/us/products/3032237>



Plug-in bridge, pitch: 6.2 mm, number of positions: 2, color: gray

---

## STP 5-2 - Marker carriers

0800967

<https://www.phoenixcontact.com/us/products/0800967>



Marker carriers, snaps into STTB 2,5, STTB 4, PTTB 2,5, and PTTB 4 double-level spring-cage terminal blocks, can be marked with UC-TM 5, UC-TMF 5, UCT-TM 5, UCT-TMF 5, ZB 5, or ZBF 5, gray, unlabeled, mounting type: plug in, lettering field size: 5 x 10.5 mm

## RIF-3-BSC/3X21 - Relay base

2900936

<https://www.phoenixcontact.com/us/products/2900936>



## RIF-RH-3 - Retaining bracket

2900955

<https://www.phoenixcontact.com/us/products/2900955>



Relay retaining bracket, with holder for marking material, suitable for RIF-3 relay base, for octal relay

---

## EL3-M52 - Relay retaining bracket

2833628

<https://www.phoenixcontact.com/us/products/2833628>



Relay retaining bracket, wiring to suit relay base RIF-3 and PR3, for 52 mm high octal relay

## RIF-3-BSC/3X21 - Relay base

2900936

<https://www.phoenixcontact.com/us/products/2900936>



## MPS-MT - Test plug

0201744

<https://www.phoenixcontact.com/us/products/0201744>



Test plug, with solder connection up to 1 mm<sup>2</sup> conductor cross section, number of positions: 1, color: gray

---

## RIF-LDP-12-24 DC - Plug-in module

2900939

<https://www.phoenixcontact.com/us/products/2900939>



Plug-in module, for mounting on RIF-1, RIF-2, RIF-3, and RIF-4, with freewheeling diode and yellow LED, polarity: A1+, A2-, input voltage: 12 V DC ... 24 V DC  $\pm$ 30 %

## RIF-3-BSC/3X21 - Relay base

2900936

<https://www.phoenixcontact.com/us/products/2900936>



## RIF-LDP-48-60 DC - Plug-in module

2900940

<https://www.phoenixcontact.com/us/products/2900940>



Plug-in module, for mounting on RIF-1, RIF-2, RIF-3, and RIF-4, with freewheeling diode and yellow LED, polarity: A1+, A2-, input voltage: 48 V DC ... 60 V DC  $\pm 20$  %

---

## RIF-LDP-110 DC - Plug-in module

2900941

<https://www.phoenixcontact.com/us/products/2900941>



Plug-in module, for mounting on RIF-1, RIF-2, RIF-3, and RIF-4, with freewheeling diode and yellow LED, polarity: A1+, A2-, input voltage: 110 V DC  $\pm 20$  %

## RIF-3-BSC/3X21 - Relay base

2900936

<https://www.phoenixcontact.com/us/products/2900936>



## RIF-LV-12-24 UC - Plug-in module

2900942

<https://www.phoenixcontact.com/us/products/2900942>



Plug-in module, for mounting on RIF-1, RIF-2, RIF-3, and RIF-4, with varistor and yellow LED, input voltage: 12 V AC ... 24 V AC / DC  $\pm 20$  %

---

## RIF-LV-48-60 UC - Plug-in module

2900943

<https://www.phoenixcontact.com/us/products/2900943>



Plug-in module, for mounting on RIF-1, RIF-2, RIF-3, and RIF-4, with varistor and yellow LED, input voltage: 48 V AC ... 60 V AC / DC  $\pm 20$  %

## RIF-3-BSC/3X21 - Relay base

2900936

<https://www.phoenixcontact.com/us/products/2900936>



## RIF-LV-120-230 AC/110 DC - Plug-in module

2900944

<https://www.phoenixcontact.com/us/products/2900944>



Plug-in module, for mounting on RIF-1, RIF-2, RIF-3, and RIF-4, with varistor and yellow LED, input voltage: 120 V AC... 230 V AC / 110 V DC  $\pm$ 20 %

---

## RIF-V-12-24 UC - Plug-in module

2900945

<https://www.phoenixcontact.com/us/products/2900945>



Plug-in module, for mounting on RIF-1, RIF-2, RIF-3, and RIF-4, with varistor, input voltage: 12 V AC ... 24 V AC / DC  $\pm$ 20 %

## RIF-3-BSC/3X21 - Relay base

2900936

<https://www.phoenixcontact.com/us/products/2900936>



## RIF-V-48-60 UC - Plug-in module

2900947

<https://www.phoenixcontact.com/us/products/2900947>



Plug-in module, for mounting on RIF-1, RIF-2, RIF-3, and RIF-4, with varistor, input voltage: 48 V AC ... 60 V AC / DC  $\pm 20$  %

---

## RIF-V-120-230 UC - Plug-in module

2900948

<https://www.phoenixcontact.com/us/products/2900948>



Plug-in module, for mounting on RIF-1, RIF-2, RIF-3, and RIF-4, with varistor, input voltage: 120 V AC ... 230 V AC / DC  $\pm 20$  %



# RIF-3-BSC/3X21 - Relay base

2900936

<https://www.phoenixcontact.com/us/products/2900936>



## RIF-RC-12-24 UC - Plug-in module

2900949

<https://www.phoenixcontact.com/us/products/2900949>



Plug-in module, for mounting on RIF-1, RIF-2, RIF-3, and RIF-4, with RC element, input voltage: 12 V AC ... 24 V AC / DC  $\pm 20$  %

---

## RIF-RC-48-60 UC - Plug-in module

2900950

<https://www.phoenixcontact.com/us/products/2900950>



Plug-in module, for mounting on RIF-1, RIF-2, RIF-3, and RIF-4, with RC element, input voltage: 48 V AC ... 60 V AC / DC  $\pm 20$  %

## RIF-3-BSC/3X21 - Relay base

2900936

<https://www.phoenixcontact.com/us/products/2900936>



## RIF-RC-120-230 UC - Plug-in module

2900951

<https://www.phoenixcontact.com/us/products/2900951>



Plug-in module, for mounting on RIF-1, RIF-2, RIF-3, and RIF-4, with RC element, input voltage: 120 V AC ... 230 V AC / DC  $\pm 20$  %

---

## RIF-T3-24UC - Timer module

2902647

<https://www.phoenixcontact.com/us/products/2902647>



Plug-in module for extending a relay module to create a timer relay, 3 time functions, 4 time ranges, for mounting on RIF-1, RIF-2, RIF-3, and RIF-4, input voltage: 12 V DC ... 24 V DC

# RIF-3-BSC/3X21 - Relay base

2900936

<https://www.phoenixcontact.com/us/products/2900936>



## RIF-BR-12-230 AC - Plug-in module

2907060

<https://www.phoenixcontact.com/us/products/2907060>



Plug-in module, for mounting on RIF-1, RIF-2, RIF-3, and RIF-4, with bridge rectifier, input voltage: 12 V AC ... 230 V AC

---

## RIF-LDM-12-24 DC - Plug-in module

2907057

<https://www.phoenixcontact.com/us/products/2907057>



Plug-in module, for mounting on RIF-1, RIF-2, RIF-3, and RIF-4, with freewheeling diode and yellow LED, input voltage: 12 V DC ... 24 V DC  $\pm 20\%$ , polarity A1-, A2+

# RIF-3-BSC/3X21 - Relay base

2900936

<https://www.phoenixcontact.com/us/products/2900936>



## NS 35/ 7,5 PERF 2000MM - DIN rail perforated

0801733

<https://www.phoenixcontact.com/us/products/0801733>



DIN rail perforated, Pack of 25 (50 m), acc. to EN 60715, material: Steel, galvanized, passivated with a thick layer, Standard profile, color: silver

---

## NS 35/ 7,5 UNPERF 2000MM - DIN rail, unperforated

0801681

<https://www.phoenixcontact.com/us/products/0801681>



DIN rail, unperforated, Pack of 25 (50 m), acc. to EN 60715, material: Steel, galvanized, passivated with a thick layer, Standard profile, color: silver

# RIF-3-BSC/3X21 - Relay base

2900936

<https://www.phoenixcontact.com/us/products/2900936>



## NS 35/ 7,5 WH PERF 2000MM - DIN rail perforated

1204119

<https://www.phoenixcontact.com/us/products/1204119>



DIN rail perforated, Pack of 25 (50 m), acc. to EN 60715, material: Steel, Galvanized, white passivated, Standard profile, color: silver

---

## NS 35/ 7,5 WH UNPERF 2000MM-VPE 10 - DIN rail, unperforated

1204122

<https://www.phoenixcontact.com/us/products/1204122>



DIN rail, unperforated, Pack of 10 (20 m), acc. to EN 60715, material: Steel, Galvanized, white passivated, Standard profile, color: silver

## RIF-3-BSC/3X21 - Relay base

2900936

<https://www.phoenixcontact.com/us/products/2900936>



### NS 35/ 7,5 AL UNPERF 2000MM - DIN rail, unperforated

0801704

<https://www.phoenixcontact.com/us/products/0801704>



DIN rail, unperforated, Pack of 25 (50 m), acc. to EN 60715, material: Aluminum, uncoated, Standard profile, color: silver

---

### NS 35/ 7,5 ZN PERF 2000MM - DIN rail perforated

1206421

<https://www.phoenixcontact.com/us/products/1206421>



DIN rail perforated, Pack of 25 (50 m), acc. to EN 60715, material: Steel, galvanized, Standard profile, color: silver

# RIF-3-BSC/3X21 - Relay base

2900936

<https://www.phoenixcontact.com/us/products/2900936>



## NS 35/ 7,5 ZN UNPERF 2000MM - DIN rail, unperforated

1206434

<https://www.phoenixcontact.com/us/products/1206434>



DIN rail, unperforated, Pack of 25 (50 m), acc. to EN 60715, material: Steel, galvanized, Standard profile, color: silver

---

## NS 35/ 7,5 CU UNPERF 2000MM-VPE 10 - DIN rail, unperforated

0801762

<https://www.phoenixcontact.com/us/products/0801762>



DIN rail, unperforated, Pack of 10 (20 m), acc. to EN 60715, material: Copper, uncoated, Standard profile, color: copper-colored

## RIF-3-BSC/3X21 - Relay base

2900936

<https://www.phoenixcontact.com/us/products/2900936>



## NS 35/ 7,5 CAP - End cap

1206560

<https://www.phoenixcontact.com/us/products/1206560>

DIN rail end piece, for DIN rail NS 35/7.5



---

## NS 35/15 PERF 2000MM - DIN rail perforated

1201730

<https://www.phoenixcontact.com/us/products/1201730>



DIN rail perforated, Pack of 25 (50 m), similar to EN 60715, material: Steel, galvanized, passivated with a thick layer, Standard profile, color: silver



# RIF-3-BSC/3X21 - Relay base

2900936

<https://www.phoenixcontact.com/us/products/2900936>



## NS 35/15 UNPERF 2000MM - DIN rail, unperforated

1201714

<https://www.phoenixcontact.com/us/products/1201714>



DIN rail, unperforated, Pack of 25 (50 m), similar to EN 60715, material: Steel, galvanized, passivated with a thick layer, Standard profile, color: silver

---

## NS 35/15 WH PERF 2000MM - DIN rail perforated

0806602

<https://www.phoenixcontact.com/us/products/0806602>



DIN rail perforated, Pack of 25 (50 m), similar to EN 60715, material: Steel, Galvanized, white passivated, Standard profile, color: white

# RIF-3-BSC/3X21 - Relay base

2900936

<https://www.phoenixcontact.com/us/products/2900936>



## NS 35/15 WH UNPERF 2000MM-VPE 10 - DIN rail, unperforated

1204135

<https://www.phoenixcontact.com/us/products/1204135>



DIN rail, unperforated, Pack of 10 (20 m), similar to EN 60715, material: Steel, Galvanized, white passivated, Standard profile, color: silver

---

## NS 35/15 AL UNPERF 2000MM - DIN rail, unperforated

1201756

<https://www.phoenixcontact.com/us/products/1201756>



DIN rail, unperforated, similar to EN 60715, material: Aluminum, uncoated, Standard profile, color: silver

# RIF-3-BSC/3X21 - Relay base

2900936

<https://www.phoenixcontact.com/us/products/2900936>



## NS 35/15 ZN PERF 2000MM - DIN rail perforated

1206599

<https://www.phoenixcontact.com/us/products/1206599>



DIN rail perforated, Pack of 25 (50 m), similar to EN 60715, material: Steel, galvanized, Standard profile, color: silver

---

## NS 35/15 ZN UNPERF 2000MM - DIN rail, unperforated

1206586

<https://www.phoenixcontact.com/us/products/1206586>



DIN rail, unperforated, Pack of 25 (50 m), similar to EN 60715, material: Steel, galvanized, Standard profile, color: silver

# RIF-3-BSC/3X21 - Relay base

2900936

<https://www.phoenixcontact.com/us/products/2900936>



## NS 35/15 CU UNPERF 2000MM-VPE 10 - DIN rail, unperforated

1201895

<https://www.phoenixcontact.com/us/products/1201895>



DIN rail, unperforated, Pack of 10 (20 m), similar to EN 60715, material: Copper, uncoated, Standard profile, color: copper-colored

---

## NS 35/15 CAP - End cap

1206573

<https://www.phoenixcontact.com/us/products/1206573>

DIN rail end piece, for DIN rail NS 35/15



# RIF-3-BSC/3X21 - Relay base

2900936

<https://www.phoenixcontact.com/us/products/2900936>



## NS 35/15-2,3 UNPERF 2000MM-VPE 10 - DIN rail, unperforated

1201798

<https://www.phoenixcontact.com/us/products/1201798>



DIN rail, unperforated, Pack of 10 (20 m), acc. to EN 60715, material: Steel, galvanized, passivated with a thick layer, Standard profile 2.3 mm, color: silver

---

Phoenix Contact 2024 © - all rights reserved

<https://www.phoenixcontact.com>

Phoenix Contact USA  
586 Fulling Mill Road  
Middletown, PA 17057, United States  
(+717) 944-1300  
[info@phoenixcon.com](mailto:info@phoenixcon.com)