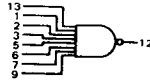
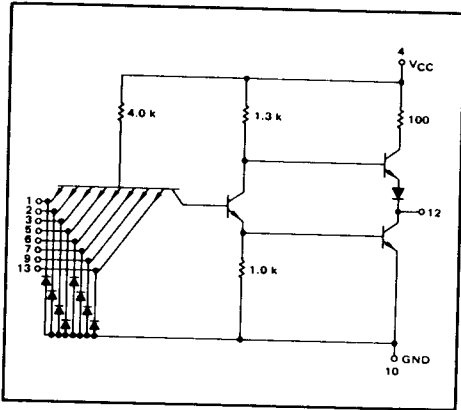


8-INPUT "NAND" GATE

MTTL I MC500/400 series

MC502 · MC552
MC402 · MC452

This device is an 8-input NAND gate. It is useful when processing a large number of variables, such as in encoders or decoders.



Positive Logic:
 $12 = \overline{1 + 2 + 3 + 5 + 6 + 7 + 9 + 13}$
Negative Logic:
 $12 = \overline{1 + 2 + 3 + 5 + 6 + 7 + 9 + 13}$

Total Power Dissipation = 15 mW typ/pkg
Propagation Delay Time = 12 ns typ

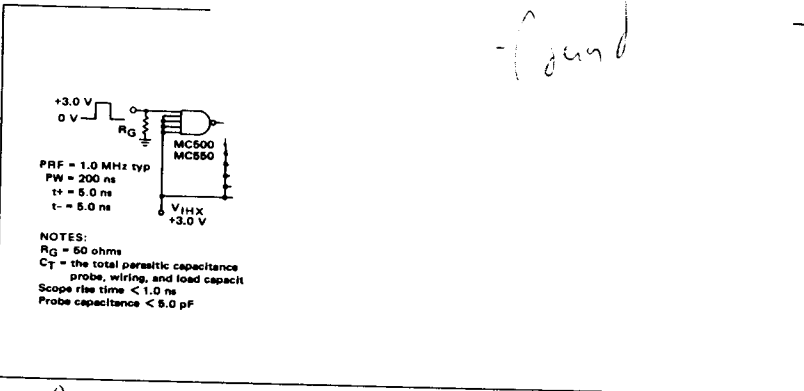
| TYPE NO. | INPUT LO |
|----------|----------|
| MC502 | |
| MC552 | |
| MC402 | |
| MC452 | |

| RANGE |
|-------|
| °C |

MC402

MC
(ground)

SWITCHING



490

490

