

File No. 2227 — CD54/74FCT240, CD54/74FCT240AT, CD54/74FCT241, CD54/74FCT241AT, CD54/74FCT244, CD54/74FCT244AT

MAXIMUM RATINGS, Absolute-Maximum Values:

DC SUPPLY-VOLTAGE (V_{CC})	-0.5V to 6V
DC INPUT DIODE CURRENT, I_{IK} (for $V_I < -0.5V$)	-20mA
DC OUTPUT DIODE CURRENT, I_{OK} (for $V_O < -0.5V$)	-50mA
DC OUTPUT SINK CURRENT per Output Pin, I_O	+70mA
DC OUTPUT SOURCE CURRENT per Output Pin, I_O	-30mA
DC V_{CC} CURRENT (I_{CC})	140mA
DC GROUND CURRENT (I_{GND})	528mA
POWER DISSIPATION PER PACKAGE (P_D):	
For $T_A = -55^\circ C$ to $+100^\circ C$ (PACKAGE TYPE E)	500mW
For $T_A = +100^\circ C$ to $+125^\circ C$ (PACKAGE TYPE E)	Derate Linearly at 8mW/ $^\circ C$ to 300mW
For $T_A = -55^\circ C$ to $+70^\circ C$ (PACKAGE TYPE M)	400mW
For $T_A = +70^\circ C$ to $+125^\circ C$ (PACKAGE TYPE M)	Derate Linearly at 6mW/ $^\circ C$ to 70mW

OPERATING-TEMPERATURE RANGE (T_A):

PACKAGE TYPE E, M $-55^\circ C$ to $+125^\circ C$

STORAGE TEMPERATURE (T_{stg}) $-65^\circ C$ to $+150^\circ C$

LEAD TEMPERATURE (DURING SOLDERING):

At distance 1/16 in. \pm 1/32 in. (1.59mm \pm 0.79mm) from case for 10s maximum $+265^\circ C$

Unit inserted into PC board min. thickness 1/16 in. (1.59mm) with solder contacting lead tips only $+300^\circ C$

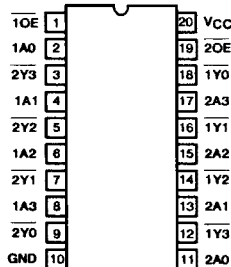
RECOMMENDED OPERATING CONDITIONS:

The following are normal operating ranges for these devices. For maximum reliability, devices should always be operated within these ranges.

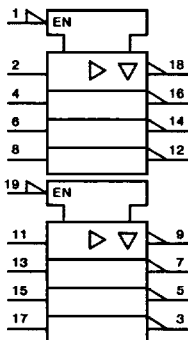
CHARACTERISTIC	LIMITS		UNITS
	MIN	MAX	
Supply-Voltage Range, V_{CC}^* :			
CD74 Series, $T_A = 0^\circ C$ to $70^\circ C$	4.75	5.25	V
CD54 Series, $T_A = -55^\circ C$ to $+125^\circ C$	4.5	5.5	V
DC Input Voltage, V_I	0	V_{CC}	V
DC Output Voltage, V_O	0	$\leq V_{CC}$	V
Operating Temperature, T_A	-55	+125	$^\circ C$
Input Rise and Fall Slew Rate, dt/dv	0	10	ns/V

* Unless otherwise specified, all voltages are referenced to ground.

CD54/74FCT240/240AT TYPES

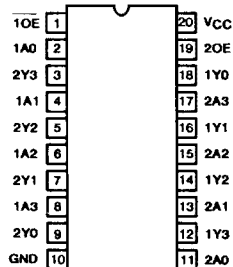


TERMINAL ASSIGNMENT

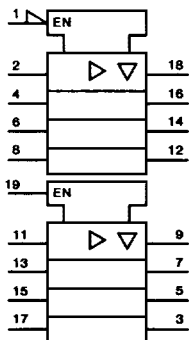


IEC LOGIC SYMBOL

CD54/74FCT241/241AT TYPES

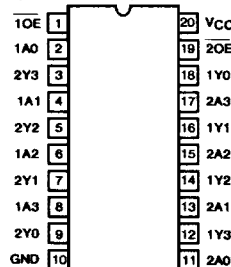


TERMINAL ASSIGNMENT

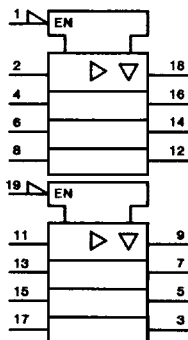


IEC LOGIC SYMBOL

CD54/74FCT244/244AT TYPES



TERMINAL ASSIGNMENT



IEC LOGIC SYMBOL

STATIC ELECTRICAL CHARACTERISTICS

FCT Series: 74FCT Commercial Temperature Range, 0°C to +70°C; V_{CC} max = 5.25V, V_{CC} min = 4.75V54FCT Extended Industrial Temperature Range, -55°C to +125°C; V_{CC} max = 5.5V, V_{CC} min = 4.5V

CHARACTERISTICS		TEST CONDITIONS			AMBIENT TEMPERATURE (T_A)						UNITS
		V_I (V)	I_O (mA)	V_{CC} (V)	+25°C		0°C to +70°C		-55°C to +125°C		
					MIN	MAX	MIN	MAX	MIN	MAX	
High-Level Input Voltage	V_{IH}			4.5 to 5.5	2	-	2	-	2	-	V
Low-Level Input Voltage	V_{IL}			4.5 to 5.5	-	0.8	-	0.8	-	0.8	V
High-Level Output Voltage	V_{OH}	V_{IH} or V_{IL}	-15	MIN	2.4	-	2.4	-	-	-	V
			-12	MIN	2.4	-	-	-	2.4	-	V
Low-Level Output Voltage	V_{OL}	V_{IH} or V_{IL}	64	MIN	-	0.55	-	0.55	-	-	V
			48	MIN	-	0.55	-	-	-	0.55	V
High-Level Input Current	I_{IH}	V_{CC}		MAX	-	0.1	-	1	-	1	μ A
Low-Level Input Current	I_{IL}	GND		MAX	-	-0.1	-	-1	-	-1	μ A
3-State Leakage Current	I_{OZH}	V_{CC}		MAX	-	0.5	-	10	-	10	μ A
	I_{OZL}	GND		MAX	-	-0.5	-	-10	-	-10	μ A
Short-Circuit Output Current *	I_{OS}	V_{CC} or GND $V_O = 0$		MAX	-60	-	-60	-	-60	-	mA
Input Clamp Voltage	V_{IK}	V_{CC} or GND	-18	MIN	-	-1.2	-	-1.2	-	-1.2	V
Quiescent Supply Current, MSI	I_{CC}	V_{CC} or GND	0	MAX	-	8	-	80	-	500	μ A
Additional Quiescent Supply Current per Input Pin TTL Inputs High, 1 Unit Load	ΔI_{CC}	3.4V†		MAX	-	1.6	-	1.6	-	2	mA

* Not more than one output should be shorted at one time. Test duration should not exceed 100ms.

† Inputs that are not measured are at V_{CC} or GND.FCT Input Loading: All inputs are 1 unit load. Unit load is ΔI_{CC} limit specified in Static Characteristics Chart, e.g., 1.6mA max. @ +70°C.

SWITCHING CHARACTERISTICS

FCT Series: $t_r, t_f = 2.5\text{ns}$, $C_L = 50\text{pF}$, R_L - See Figure 2

CHARACTERISTICS	SYMBOL	V_{CC} (V)	CD54/74FCT240, 241, 244						CD54/74FCT240AT, 241AT*, 244AT						UNITS	
			AMBIENT TEMPERATURE (T_A)													
			+25°C		0°C to +70°C		-55°C to +125°C		+25°C		0°C to +70°C		-55°C to +125°C			
			TYP	MIN	MAX	MIN	MAX	TYP	MIN	MAX	MIN	MAX				
Propagation Delays: Data to Outputs	FCT240/AT	t_{PLH}, t_{PHL}	5†	5	1.5	8	1.5	9	4.4	1.5	5.6	1.5	6.7	ns		
	FCT241/AT	t_{PLH}, t_{PHL}	5	4	1.5	6.5	1.5	7						ns		
	FCT244/AT	t_{PLH}, t_{PHL}	5	4.5	1.5	6.5	1.5	7	3.8	1.5	5.3	1.5	6.2	ns		
Output Enable Times	FCT240/AT	t_{PZL}, t_{PZH}	5	7	1.5	10	1.5	10.5	4.7	1.5	6.2	1.5	7.7	ns		
	FCT241/AT	t_{PZL}, t_{PZH}	5	5.5	1.5	8	1.5	8.5						ns		
	FCT244/AT	t_{PZL}, t_{PZH}	5	6	1.5	8	1.5	8.5	4.8	1.5	6.5	1.5	7.8	ns		
Output Disable Times	FCT240/AT	t_{PLZ}, t_{PHZ}	5	6	1.5	9.5	1.5	10	4	1.5	5.6	1.5	6.5	ns		
	FCT241/AT	t_{PLZ}, t_{PHZ}	5	4.5	1.5	7	1.5	7.5						ns		
	FCT244/AT	t_{PLZ}, t_{PHZ}	5	5	1.5	7	1.5	7.5	4.5	1.5	5.8	1.5	6.8	ns		
Power Dissipation Capacitance	FCT240/AT,	$C_{PD} \S$		38 Typical						38 Typical						pF
	FCT241/AT,	$C_{PD} \S$		33 Typical						33 Typical						pF
	FCT244/AT	$C_{PD} \S$		35 Typical						35 Typical						pF
Min. (Valley) V_{OHV} During Switching of Other Outputs (Output Under Test Not Switching)	V_{OHV} See Figure 1	5	0.5 Typical @ +25°C										V			
Max. (Peak) V_{OLP} During Switching of Other Outputs (Output Under Test Not Switching)	V_{OLP} See Figure 1	5	1 Typical @ +25°C										V			
Input Capacitance	C_I	-	-	-	10	-	10	-	-	10	-	10	pF			
3-State Output Capacitance	C_O	-	-	-	15	-	15	-	-	15	-	15	pF			

†5V: min. is @ 5.5V
max. is @ 4.5V5V: min. is @ 5.25V for 0°C to +70°C
max. is @ 4.75V for 0°C to +70°C
typ. is @ 5V

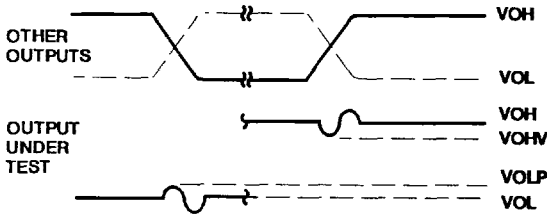
* Contact local Sales Office for availability

§ C_{PD} , measured per function, is used to determine the dynamic power consumption. P_D (per package) = $V_{CC} I_{CC} + \Sigma (V_{CC}^2 f_i C_{PD} + V_O^2 f_o C_L + V_{CC} \Delta I_{CC})$ where: V_{CC} = supply voltage ΔI_{CC} = flow through current x unit load C_L = output load capacitance

D = duty cycle of input high

 f_o = output frequency f_i = input frequency

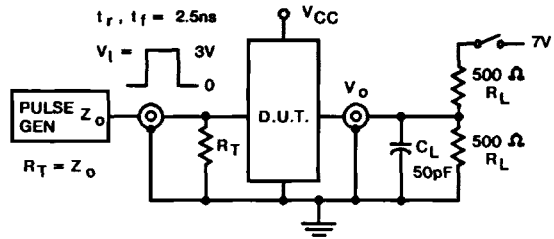
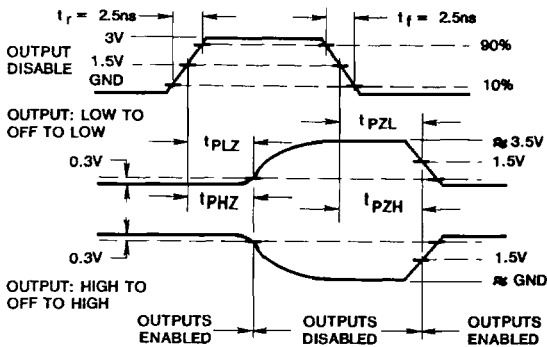
PARAMETER MEASUREMENT INFORMATION



NOTES:

1. VOLP is measured with respect to a ground reference near the output under test. VOHV is measured with respect to VOH.
2. Input pulses have the following characteristics:
 PRR ≤ 1MHz, $t_r = 2.5ns$, $t_f = 2.5ns$, skew 1ns.
3. R.F. fixture with 700-MHz design rules required. IC should be soldered into test board and bypassed with 0.1μF capacitor. Scope and probes require 700-MHz bandwidth.

Figure 1 - Simultaneous switching transient waveforms.



TEST	SWITCH POSITION
t_{PLZ} , t_{PZL} , OPEN DRAIN	CLOSED
t_{PHZ} , t_{PZH} , t_{PLH} , t_{PHL}	OPEN

Figure 2 - Three-state propagation delay times and test circuit.

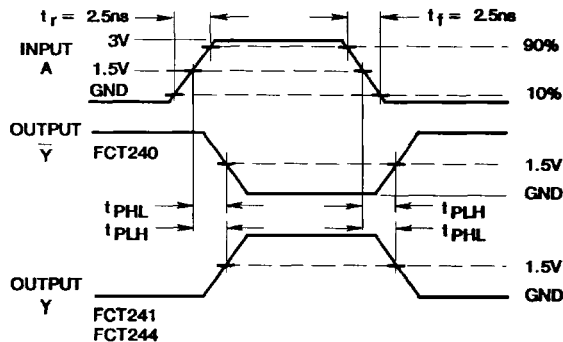


Figure 3 - Propagation delay times.