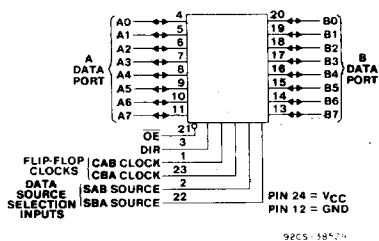


# CD54/74AC647, CD54/74AC649 CD54/74ACT647, CD54/74ACT649

## Advance Information

### Octal-Bus Transceiver/Registers, with Open Drain

CD54/74AC/ACT647 - Non-Inverting  
CD54/74AC/ACT649 - Inverting



**FUNCTIONAL DIAGRAM**

#### Type Features:

- Buffered inputs
- Typical propagation delay:  
7 ns @ V<sub>CC</sub> = 5 V, T<sub>A</sub> = 25°C, C<sub>L</sub> = 50 pF

The RCA CD54/74AC647 and CD54/74AC649 and the CD54/74ACT647 and CD54/74ACT649 open-drain, octal-bus transceiver/registers use the RCA ADVANCED CMOS technology. The CD54/74AC649 and CD54/74ACT649 have inverting outputs. The CD54/74AC647 and CD54/74ACT647 have non-inverting outputs. These devices are bus transceivers with D-type flip-flops which act as internal storage registers on the LOW-to-HIGH transition of either CAB or CBA clock inputs. Output Enable (OE) and Direction (DIR) inputs control the transceiver functions. Data present at the high-impedance output can be stored in either register or both but only one of the two buses can be enabled as outputs at any one time. The Select controls (SAB and SBA) can multiplex stored and transparent (real time) data. The Direction control determines which data bus will receive data when the Output Enable (OE) is LOW. In the high-impedance mode (Output Enable HIGH), A data can be stored in one register and B data can be stored in the other register. The clocks are not gated with the Direction (DIR) and Output Enable (OE) terminals; data at the A or B terminals can be clocked into the storage flip-flops at any time.

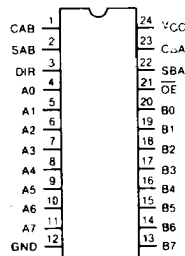
The CD74AC/ACT647 and CD74AC/ACT649 are supplied in 24-lead dual-in-line narrow-body plastic packages (EN suffix) and in 24-lead dual-in-line small-outline plastic packages (M suffix). Both package types are operable over the following temperature ranges: Commercial (0 to 70°C); Industrial (-40 to +85°C); and Extended Industrial/Military (-55 to +125°C).

The CD54AC/ACT647 and CD54AC/ACT649, available in chip form (H suffix), are operable over the -55 to +125°C temperature range.

#### Family Features:

- Exceeds 2-kV ESD Protection - MIL-STD-883, Method 3015
- SCR-Latchup-resistant CMOS process and circuit design
- Speed of bipolar FAST\*/AS/S with significantly reduced power consumption
- Balanced propagation delays
- AC types feature 1.5-V to 5.5-V operation and balanced noise immunity at 30% of the supply
- ± 24-mA output drive current
  - Fanout to 15 FAST\* ICs
  - Drives 50-ohm transmission lines

\*FAST is a Registered Trademark of Fairchild Semiconductor Corp.



**TERMINAL ASSIGNMENT**

9

# CD54/74AC647, CD54/74AC649 CD54/74ACT647, CD54/74ACT649

FUNCTION TABLE

INPUTS						DATA I/O#		OPERATION OR FUNCTION	
OE	DIR	CAB	CBA	SAB	SBA	AD THRU A7	B0 THRU B7	647	649
X	X		X	X	X	Input	Not specified	Store A, B unspecified	Store A, B unspecified
X	X	X		X	X	Not specified	Input	Store B, A unspecified	Store B, A unspecified
H	X			X	X	Input	Input	Store A and B Data	Store A and B Data
H	X	H or L	H or L	X	X			Isolation, hold storage	Isolation, hold storage
L	L	X	X	X	L	Output	Input	Real-Time B Data to A Bus	Real-Time $\bar{B}$ Data to A Bus
L	L	X	H or L	X	H			Stored B Data to A Bus	Store $\bar{B}$ Data to A Bus
L	H	X	X	L	X	Input	Output	Real-Time A Data to B Bus	Real-Time $\bar{A}$ Data to B Bus
L	H	H or L	X	H	X			Stored A Data to B Bus	Stored $\bar{A}$ Data to B Bus

#The data output functions may be enabled or disabled by various signals at the OE and DIR inputs. Data input functions are always enabled, i.e., data at the bus pins will be stored on every low-to-high transition on the clock inputs.  
To prevent excess currents in the High-Z modes, all I/O terminals should be terminated with 10 kΩ resistors.

**MAXIMUM RATINGS, Absolute-Maximum Values:**

DC SUPPLY-VOLTAGE ( $V_{CC}$ )	-0.5 to 6 V
DC INPUT DIODE CURRENT, $I_{IK}$ (for $V_I < -0.5$ V or $V_I > V_{CC} + 0.5$ V)	±20 mA
DC OUTPUT DIODE CURRENT, $I_{OK}$ (for $V_O < -0.5$ V or $V_O > V_{CC} + 0.5$ V)	±50 mA
DC OUTPUT SOURCE OR SINK CURRENT per Output Pin, $I_O$ (for $V_O > -0.5$ V or $V_O < V_{CC} + 0.5$ V)	±50 mA
DC $V_{CC}$ or GROUND CURRENT ( $I_{CC}$ or $I_{GND}$ )	±100 mA*
POWER DISSIPATION PER PACKAGE ( $P_D$ ):	
For $T_A = -55$ to $+100^\circ\text{C}$ (PACKAGE TYPE E)	500 mW
For $T_A = +100$ to $+125^\circ\text{C}$ (PACKAGE TYPE E)	Derate Linearly at 8 mW/ $^\circ\text{C}$ to 300 mW
For $T_A = -55$ to $+70^\circ\text{C}$ (PACKAGE TYPE M)	400 mW
For $T_A = +70$ to $+125^\circ\text{C}$ (PACKAGE TYPE M)	Derate Linearly at 6 mW/ $^\circ\text{C}$ to 70 mW
OPERATING-TEMPERATURE RANGE ( $T_A$ )	-55 to $+125^\circ\text{C}$
STORAGE TEMPERATURE ( $T_{stg}$ )	-65 to $+150^\circ\text{C}$
LEAD TEMPERATURE (DURING SOLDERING):	
At distance $1/16 \pm 1/32$ in. ( $1.59 \pm 0.79$ mm) from case for 10 s maximum	$+265^\circ\text{C}$
Unit inserted into PC board min. thickness $1/16$ in. ( $1.59$ mm) with solder contacting lead tips only	$+300^\circ\text{C}$

\*For up to 4 outputs per device; add ± 25 mA for each additional output.

**RECOMMENDED OPERATING CONDITIONS:**

For maximum reliability, normal operating conditions should be selected so that operation is always within the following ranges:

CHARACTERISTICS	LIMITS		UNITS
	MIN.	MAX.	
Supply-Voltage Range, $V_{CC}$ *: (For $T_A =$ Full Package-Temperature Range) AC Types ACT Types	1.5 4.5	5.5 5.5	V V
DC Input or Output Voltage, $V_I$ , $V_O$	0	$V_{CC}$	V
Operating Temperature, $T_A$	-55	+125	$^\circ\text{C}$
Input Rise and Fall Slew Rate, dt/dv at 1.5 V to 3 V (AC Types) at 3.6 V to 5.5 V (AC Types) at 4.5 V to 5.5 V (ACT Types)	0 0 0	50 20 10	ns/V ns/V ns/V

\*Unless otherwise specified, all voltages are referenced to ground.

# CD54/74AC647, CD54/74AC649 CD54/74ACT647, CD54/74ACT649

**STATIC ELECTRICAL CHARACTERISTICS: AC Series**

CHARACTERISTICS	TEST CONDITIONS		V <sub>CC</sub> (V)	AMBIENT TEMPERATURE (T <sub>A</sub> ) - °C						UNITS
				+25		-40 to +85		-55 to +125		
	V <sub>I</sub> (V)	I <sub>O</sub> (mA)		MIN.	MAX.	MIN.	MAX.	MIN.	MAX.	
High-Level Input Voltage V <sub>IH</sub>			1.5	1.2	—	1.2	—	1.2	—	V
			3 5.5	2.1 3.85	— —	2.1 3.85	— —	2.1 3.85	— —	
Low-Level Input Voltage V <sub>IL</sub>			1.5	—	0.3	—	0.3	—	0.3	V
			3 5.5	— —	0.9 1.65	— —	0.9 1.65	— —	0.9 1.65	
Low-Level Output Voltage V <sub>OL</sub>	V <sub>OL</sub> or V <sub>IL</sub> #,*	0.05	1.5	—	0.1	—	0.1	—	0.1	V
		0.05	3	—	0.1	—	0.1	—	0.1	
		0.05	4.5	—	0.1	—	0.1	—	0.1	
		12	3	—	0.36	—	0.44	—	0.5	
		24	4.5	—	0.36	—	0.44	—	0.5	
		75	5.5	—	—	—	1.65	—	—	
50	5.5	—	—	—	—	—	1.65			
Input Leakage Current I <sub>I</sub>	V <sub>CC</sub> or GND		5.5	—	±0.1	—	±1	—	±1	μA
Off-State Leakage Current I <sub>OZ</sub>	V <sub>IH</sub> or V <sub>IL</sub> V <sub>O</sub> = V <sub>CC</sub> or GND		5.5	—	±0.5	—	±5	—	±10	μA
Quiescent Supply Current, MSI I <sub>CC</sub>	V <sub>CC</sub> or GND	0	5.5	—	8	—	80	—	160	μA

#Test one output at a time for a 1-second maximum duration. Measurement is made by forcing current and measuring voltage to minimize power dissipation.

\*Test verifies a minimum 50-ohm transmission-line-drive capability at +85°C, 75 ohms at +125°C.

# CD54/74AC647, CD54/74AC649 CD54/74ACT647, CD54/74ACT649

STATIC ELECTRICAL CHARACTERISTICS: ACT Series

CHARACTERISTICS	TEST CONDITIONS		V <sub>CC</sub> (V)	AMBIENT TEMPERATURE (T <sub>a</sub> ) - °C						UNITS
				+25		-40 to +85		-55 to +125		
	V <sub>I</sub> (V)	I <sub>O</sub> (mA)		MIN.	MAX.	MIN.	MAX.	MIN.	MAX.	
High-Level Input Voltage V <sub>IH</sub>			4.5 to 5.5	2	—	2	—	2	—	V
Low-Level Input Voltage V <sub>IL</sub>			4.5 to 5.5	—	0.8	—	0.8	—	0.8	V
Low-Level Output Voltage V <sub>OL</sub>	V <sub>OL</sub> or V <sub>IL</sub> #, * }	0.05	4.5	—	0.1	—	0.1	—	0.1	V
		24	4.5	—	0.36	—	0.44	—	0.5	
		75	5.5	—	—	—	1.65	—	—	
		50	5.5	—	—	—	—	—	1.65	
Input Leakage Current I <sub>I</sub>	V <sub>CC</sub> or GND		5.5	—	±0.1	—	±1	—	±1	μA
Off-State Leakage Current I <sub>OZ</sub>	V <sub>IH</sub> or V <sub>IL</sub> V <sub>O</sub> = V <sub>CC</sub> or GND		5.5	—	±0.5	—	±5	—	±10	μA
Quiescent Supply Current, MSI I <sub>CC</sub>	V <sub>CC</sub> or GND	0	5.5	—	8	—	80	—	160	μA
Additional Quiescent Supply Current per Input Pin TTL Inputs High 1 Unit Load ΔI <sub>CC</sub>	V <sub>CC</sub> -2.1		4.5 to 5.5	—	2.4	—	2.8	—	3	mA

#Test one output at a time for a 1-second maximum duration. Measurement is made by forcing current and measuring voltage to minimize power dissipation.

\*Test verifies a minimum 50-ohm transmission-line-drive capability at +85°C, 75 ohms at +125°C.

**ACT INPUT LOADING TABLE**

INPUT	UNIT LOAD*
CAB, CBA	1.25
SAB, SBA	1.2
DIR	0.67
OE	1.17
A <sub>n</sub> , B <sub>n</sub>	0.4

\*Unit load is ΔI<sub>CC</sub> limit specified in Static Characteristics Chart, e.g., 2.4 mA max. @ 25°C.

# CD54/74AC647, CD54/74AC649 CD54/74ACT647, CD54/74ACT649

**PREREQUISITE FOR SWITCHING: AC Series**

CHARACTERISTICS	SYMBOL	V <sub>CC</sub> (V)	AMBIENT TEMPERATURE (T <sub>A</sub> ) - °C				UNITS
			-40 to +85		-55 to +125		
			MIN.	MAX.	MIN.	MAX.	
Maximum Frequency	f <sub>max</sub>	1.5	11	—	10	—	MHz
		3.3*	101	—	89	—	
		5†	143	—	125	—	
Setup Time Data to Clock	t <sub>SU</sub>	1.5	15.8	—	18	—	ns
		3.3	3.1	—	3.5	—	
		5	2.2	—	2.5	—	
Hold Time Data to Clock	t <sub>H</sub>	1.5	2	—	2	—	ns
		3.3	2	—	2	—	
		5	2	—	2	—	
Clock Pulse Width	t <sub>W</sub>	1.5	44	—	50	—	ns
		3.3	4.9	—	5.6	—	
		5	3.5	—	4	—	

\*3.3 V: min. is @ 3 V  
†5 V: min. is @ 4.5 V

**SWITCHING CHARACTERISTICS: AC Series; t<sub>r</sub>, t<sub>f</sub> = 3 ns, C<sub>L</sub> = 50 pF**

CHARACTERISTICS	SYMBOL	V <sub>CC</sub> (V)	AMBIENT TEMPERATURE (T <sub>A</sub> ) - °C				UNITS
			-40 to +85		-55 to +125		
			MIN.	MAX.	MIN.	MAX.	
Propagation Delays: Stored A Data to B Bus 647 Stored B Data to A Bus Stored $\bar{A}$ Data to B Bus 649 Stored B Data to A Bus	t <sub>PZL</sub>	1.5	—	154	—	169	ns
		3.3*	5.2	18.4	5.1	20.2	
		5†	3.5	12.3	3.4	13.5	
	t <sub>PLZ</sub>	1.5	—	166	—	183	ns
		3.3	4.7	18.6	4.6	18.3	
		5	3.8	13.3	3.7	14.6	
A Data to B Bus 647 B Data to A Bus $\bar{A}$ Data to B Bus 649 B Data to A Bus	t <sub>PZL</sub>	1.5	—	125	—	138	ns
		3.3	4.2	15	4.1	16.5	
		5	2.8	10	2.8	11	
	t <sub>PLZ</sub>	1.5	—	137	—	151	ns
		3.3	3.9	13.7	3.8	15.1	
		5	3.1	11	3	12.1	
Select to Data 647, 649	t <sub>PZL</sub>	1.5	—	136	—	150	ns
		3.3	4.6	16.4	4.5	18	
		5	3.1	10.9	3	12	
	t <sub>PLZ</sub>	1.5	—	149	—	164	ns
		3.3	4.2	14.9	4.6	16.4	
		5	3.4	11.9	3.3	13.1	
Enable, Disable Times Bus to Output or Register to Output	t <sub>PZL</sub> t <sub>PLZ</sub>	1.5	—	154	—	169	ns
		3.3	5.2	18.4	5.1	20.2	
		5	3.5	12.3	3.4	13.5	
Power Dissipation Capacitance	C <sub>PD</sub> §	—	150 Typ.		150 Typ.		pF
Max. (Peak) V <sub>OL</sub> During Switching of Other Outputs (Output Under Test Not Switching)	V <sub>OLP</sub> See Fig. 1	5	1 Typ. @ 25°C				V
Input Capacitance	C <sub>I</sub>	—	—	10	—	10	pF
Off-State Output Capacitance	C <sub>O</sub>	—	—	15	—	15	pF

\*3.3 V: min. is @ 3.6 V  
max. is @ 3 V  
†5 V: min. is @ 5.5 V  
max. is @ 4.5 V

§C<sub>PD</sub> is used to determine the dynamic power consumption, per package.  
P<sub>D</sub> = V<sub>CC</sub><sup>2</sup> C<sub>PD</sub> f<sub>i</sub> + Σ V<sub>CC</sub><sup>2</sup> C<sub>L</sub> f<sub>o</sub> where f<sub>i</sub> = input frequency  
f<sub>o</sub> = output frequency  
C<sub>L</sub> = output load capacitance  
V<sub>CC</sub> = supply voltage.

# CD54/74AC647, CD54/74AC649 CD54/74ACT647, CD54/74ACT649

PREREQUISITE FOR SWITCHING: ACT Series

CHARACTERISTICS	SYMBOL	V <sub>CC</sub> (V)	AMBIENT TEMPERATURE (T <sub>A</sub> ) - °C				UNITS
			-40 to +85		-55 to +125		
			MIN.	MAX.	MIN.	MAX.	
Maximum Frequency	f <sub>max</sub>	5*	125	—	110	—	MHz
Setup Time Data to Clock	t <sub>SU</sub>	5	2.2	—	2.5	—	ns
Hold Time Data to Clock	t <sub>H</sub>	5	2	—	2	—	ns
Clock Pulse Width	t <sub>w</sub>	5	3.9	—	4.5	—	ns

\*5 V: min. is @ 4.5 V

SWITCHING CHARACTERISTICS: ACT Series; t<sub>r</sub>, t<sub>f</sub> = 3 ns, C<sub>L</sub> = 50 pF

CHARACTERISTICS	SYMBOL	V <sub>CC</sub> (V)	AMBIENT TEMPERATURE (T <sub>A</sub> ) - °C				UNITS
			-40 to +85		-55 to +125		
			MIN.	MAX.	MIN.	MAX.	
Propagation Delays: Stored A Data to B Bus 647 Stored B Data to A Bus Stored $\bar{A}$ Data to B Bus 649 Stored B Data to A Bus	t <sub>PZL</sub> t <sub>PLZ</sub>	5* 5	4 4.3	14.1 15.1	3.9 4.2	15.5 16.6	ns ns
A Data to B Bus 647 B Data to A Bus $\bar{A}$ Data to B Bus 649 B Data to A Bus	t <sub>PZL</sub> t <sub>PLZ</sub>	5 5	3.2 3.5	11.4 12.4	3.1 3.4	12.5 13.6	ns ns
Select to Data 647, 649	t <sub>PZL</sub> t <sub>PLZ</sub>	5 5	4 4.3	14.1 15.1	3.9 4.2	15.5 16.6	ns ns
Enable, Disable Times Bus to Output or Register to Output	t <sub>PZL</sub> t <sub>PLZ</sub>	5	4	14.1	3.9	15.5	ns
Power Dissipation Capacitance	C <sub>PD</sub> §	—	150 Typ.		150 Typ.		pF
Max. (Peak) V <sub>OL</sub> During Switching of Other Outputs (Output Under Test Not Switching)	V <sub>OLP</sub> See Fig. 1	5	1 Typ. @ 25°C				V
Input Capacitance	C <sub>I</sub>	—	—	10	—	10	pF
Off-State Output Capacitance	C <sub>O</sub>	—	—	15	—	15	pF

\*5 V min. is @ 5.5 V  
max. is @ 4.5 V

§C<sub>PD</sub> is used to determine the dynamic power consumption, per package.

$$P_D = V_{CC}^2 C_{PD} f_i + \sum V_{CC}^2 C_L f_o + V_{CC} \Delta I_{CC}$$

where f<sub>i</sub> = input frequency

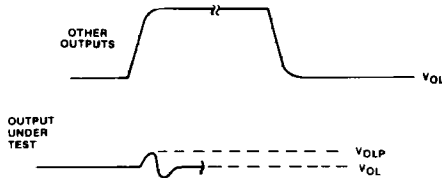
f<sub>o</sub> = output frequency

C<sub>L</sub> = output load capacitance

V<sub>CC</sub> = supply voltage.

# CD54/74AC647, CD54/74AC649 CD54/74ACT647, CD54/74ACT649

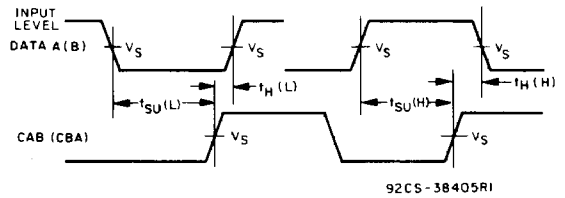
## PARAMETER MEASUREMENT INFORMATION



- NOTES:
1.  $V_{OLP}$  IS MEASURED WITH RESPECT TO A GROUND REFERENCE NEAR THE OUTPUT UNDER TEST.
  2. INPUT PULSES HAVE THE FOLLOWING CHARACTERISTICS:  
 $PRR \leq 1$  MHz,  $t_r = 3$  ns,  $t_f = 3$  ns, SKEW 1 ns.
  3. R.F. FIXTURE WITH 700-MHz DESIGN RULES REQUIRED.  
 IC SHOULD BE SOLDERED INTO TEST BOARD AND BYPASSED WITH  $0.1 \mu\text{F}$  CAPACITOR. SCOPE AND PROBES REQUIRE 700-MHz BANDWIDTH.

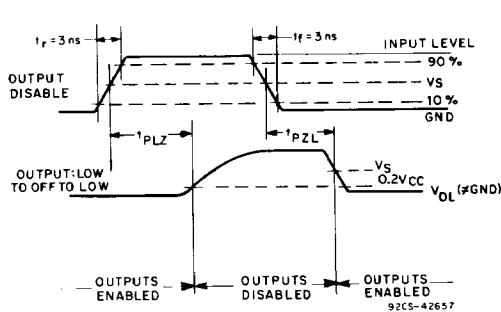
92CS-42602

Fig. 1 - Simultaneous switching transient waveforms.

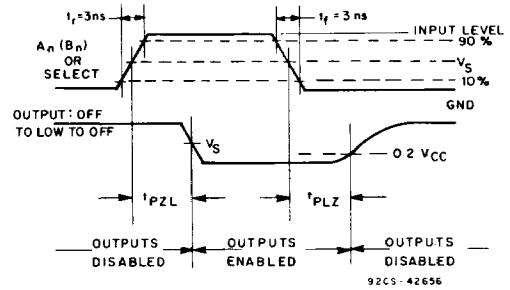


92CS-38405R1

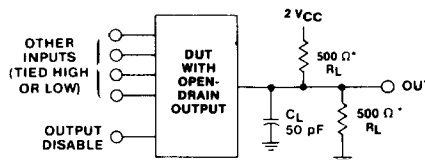
Fig. 2 - Data setup and hold times.



92CS-42657



92CS-42656



\*FOR AC SERIES ONLY: WHEN  $V_{CC} = 1.5$  V,  $R_L = 1$  k $\Omega$

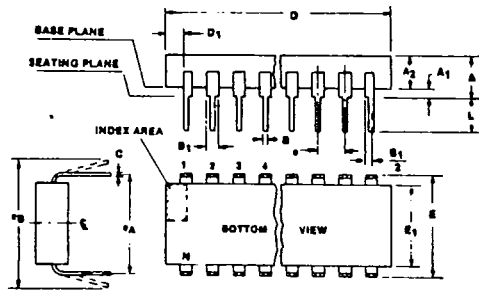
92CS-42610

Fig. 3 - Open-drain propagation delay times and test circuit.

	CD54/74AC	CD54/74ACT
Input Level	$V_{CC}$	3 V
Input Switching Voltage, $V_S$	$0.5 V_{CC}$	1.5 V
Output Switching Voltage, $V_S$	$0.5 V_{CC}$	$0.5 V_{CC}$

Dual-In-Line Plastic Packages

T-90-20



(E) Suffix (JEDEC MS-001-AC)  
14-Lead Dual-In-Line Plastic Package

SYMBOL	INCHES		MILLIMETERS		NOTES
	MIN.	MAX.	MIN.	MAX.	
A	—	0.210	—	5.33	9
A <sub>1</sub>	0.015	—	0.39	—	9
A <sub>2</sub>	0.115	0.195	2.93	4.95	
B	0.014	0.022	0.356	0.558	
B <sub>1</sub>	0.045	0.070	1.15	1.77	3
C	0.008	0.015	0.204	0.381	
D	0.725	0.795	18.42	20.19	4
D <sub>1</sub>	0.005	—	0.13	—	12
E	0.300	0.325	7.62	8.25	5
E <sub>1</sub>	0.240	0.280	6.10	7.11	6, 7
e	0.100 BSC		2.54 BSC		8
*A	0.300 BSC		7.62 BSC		9
*B	—	0.430	—	10.92	10
L	0.115	0.160	2.93	4.06	9
N	14		14		11

92CS-39901

(E) Suffix (JEDEC MS-001-AA)  
16-Lead Dual-In-Line Plastic Package

SYMBOL	INCHES		MILLIMETERS		NOTES
	MIN.	MAX.	MIN.	MAX.	
A	—	0.210	—	5.33	9
A <sub>1</sub>	0.015	—	0.39	—	9
A <sub>2</sub>	0.115	0.195	2.93	4.95	
B	0.014	0.022	0.356	0.558	
B <sub>1</sub>	0.045	0.070	1.15	1.77	3
C	0.008	0.015	0.204	0.381	
D	0.745	0.840	18.93	21.33	4
D <sub>1</sub>	0.005	—	0.13	—	12
E	0.300	0.325	7.62	8.25	5
E <sub>1</sub>	0.240	0.280	6.10	7.11	6, 7
e	0.100 BSC		2.54 BSC		8
*A	0.300 BSC		7.62 BSC		9
*B	—	0.430	—	10.92	10
L	0.115	0.160	2.93	4.06	9
N	16		16		11

92CS-39900

Notes:

1. Refer to JEDEC Publication No. 95 JEDEC Registered and Standard Outlines for Solid State Products, for rules and general information concerning registered and standard outlines, in Section 2.2.
2. Protrusions (flash) on the base plane surface shall not exceed 0.010 in. (0.25 mm).
3. The dimension shown is for full leads. "Half" leads are optional at lead positions  
 $1, N, \frac{N}{2}, \frac{N}{2} + 1.$
4. Dimension D does not include mold flash or protrusions. Mold flash or protrusions shall not exceed 0.010 in. (0.25 mm).
5. E is the dimension to the outside of the leads and is measured with the leads perpendicular to the base plane (zero lead spread).
6. Dimension E<sub>1</sub> does not include mold flash or protrusions.
7. Package body and leads shall be symmetrical around center line shown in end view.
8. Lead spacing e shall be non-cumulative and shall be measured at the lead tip. This measurement shall be made before insertion into gauges, boards or sockets.
9. This is a basic installed dimension. Measurement shall be made with the device installed in the seating plane gauge (JEDEC Outline No. GS-3, seating plane gauge). Leads shall be in true position within 0.010 in. (0.25 mm) diameter for dimension e<sub>A</sub>.
10. e<sub>B</sub> is the dimension to the outside of the leads and is measured at the lead tips before the device is installed. Negative lead spread is not permitted.
11. N is the maximum number of lead positions.
12. Dimension D<sub>1</sub> at the left end of the package must equal dimension D<sub>1</sub> at the right end of the package within 0.030 in. (0.76 mm).
13. For automatic insertion, any raised irregularity on the top surface (step, mesa, etc.) shall be symmetrical about the lateral and longitudinal package centerlines.

(E) Suffix (JEDEC MS-001-AE)  
20-Lead Dual-In-Line Plastic Package

SYMBOL	INCHES		MILLIMETERS		NOTES
	MIN.	MAX.	MIN.	MAX.	
A	—	0.210	—	5.33	9
A <sub>1</sub>	0.015	—	0.39	—	9
A <sub>2</sub>	0.115	0.195	2.93	4.95	
B	0.014	0.022	0.356	0.558	
B <sub>1</sub>	0.045	0.070	1.15	1.77	3
C	0.008	0.015	0.204	0.381	
D	0.925	1.060	23.5	26.9	4
D <sub>1</sub>	0.005	—	0.13	—	12
E	0.300	0.325	7.62	8.25	5
E <sub>1</sub>	0.240	0.280	6.10	7.11	6, 7
e	0.100 BSC		2.54 BSC		8
*A	0.300 BSC		7.62 BSC		9
*B	—	0.430	—	10.92	10
L	0.115	0.160	2.93	4.06	9
N	20		20		11

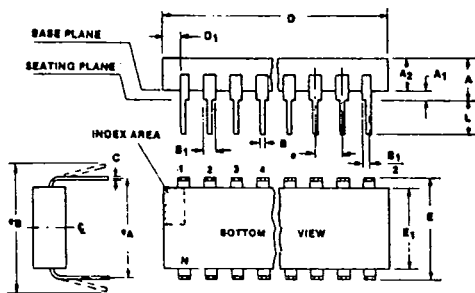
92CS-39997



# Dual-In-Line Plastic Packages

## T-90-20

(E) Suffix (JEDEC MS-001-AF)  
24-Lead Dual-In-Line Plastic Package



SYMBOL	INCHES		MILLIMETERS		NOTES
	MIN.	MAX.	MIN.	MAX.	
A	—	0.210	—	5.33	9
A <sub>1</sub>	0.015	—	0.39	—	9
A <sub>2</sub>	0.115	0.195	2.93	4.95	
B	0.014	0.022	0.356	0.558	
B <sub>1</sub>	0.045	0.070	1.15	1.77	3
C	0.008	0.015	0.204	0.381	
D	1.125	1.275	28.6	32.3	4
D <sub>1</sub>	0.005	—	0.13	—	12
E	0.300	0.325	7.62	8.25	5
E <sub>1</sub>	0.240	0.280	6.10	7.11	6, 7
e	0.100 BSC		2.54 BSC		8
e <sub>A</sub>	0.300 BSC		7.62 BSC		9
e <sub>B</sub>	—	0.430	—	10.92	10
L	0.115	0.160	2.93	4.06	9
N	24		24		11

92CS-39943

**Notes:**

1. Refer to JEDEC Publication No. 95 JEDEC Registered and Standard Outlines for Solid State Products, for rules and general information concerning registered and standard outlines, in Section 2.2.
2. Protrusions (flash) on the base plane surface shall not exceed 0.010 in. (0.25 mm).
3. The dimension shown is for full leads. "Half" leads are optional at lead positions  

$$1, N, \frac{N}{2}, \frac{N}{2} + 1.$$
4. Dimension D does not include mold flash or protrusions. Mold flash or protrusions shall not exceed 0.010 in. (0.25 mm).
5. E is the dimension to the outside of the leads and is measured with the leads perpendicular to the base plane (zero lead spread).
6. Dimension E<sub>1</sub> does not include mold flash or protrusions.
7. Package body and leads shall be symmetrical around

center line shown in end view.

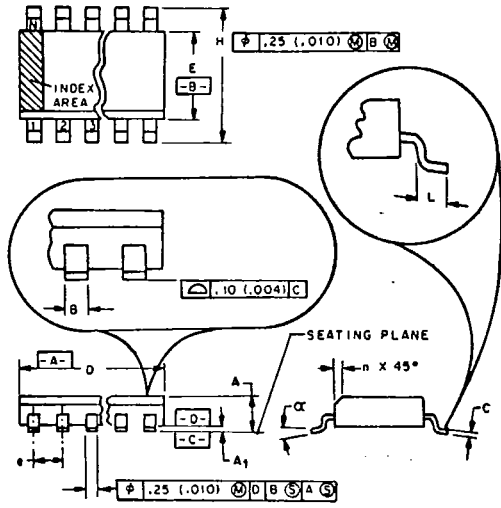
8. Lead spacing e shall be non-cumulative and shall be measured at the lead tip. This measurement shall be made before insertion into gauges, boards or sockets.
9. This is a basic installed dimension. Measurement shall be made with the device installed in the seating plane gauge (JEDEC Outline No. GS-3, seating plane gauge). Leads shall be in true position within 0.010 in. (0.25 mm) diameter for dimension e<sub>A</sub>.
10. e<sub>B</sub> is the dimension to the outside of the leads and is measured at the lead tips before the device is installed. Negative lead spread is not permitted.
11. N is the maximum number of lead positions.
12. Dimension D<sub>1</sub> at the left end of the package must equal dimension D<sub>1</sub> at the right end of the package within 0.030 in. (0.76 mm).
13. For automatic insertion, any raised irregularity on the top surface (step, mesa, etc.) shall be symmetrical about the lateral and longitudinal package centerlines.



Dimensional Outlines

# Dual-In-Line Small-Outline Plastic Packages

T-90-20



NOTES:

1. Refer to applicable symbol list.
2. Dimensioning and tolerancing per ANSI Y14.5M-1982.
3. "D" is a reference datum.
4. "A" and "B" are reference datums and do not include mold flash or protrusions. Mold flash or protrusions shall not exceed 0.15 mm (0.006 in.).
5. The chamfer on the body is optional. If it is not present, a visual index feature must be located within the cross-hatched area.
6. "L" is the length of terminal for soldering to a substrate.
7. "N" is the number of terminal positions.
8. Terminal numbers are shown for reference only.
9. Controlling dimensions: MILLIMETERS.

M Suffix (JEDEC MS-012AB)  
14-Lead Dual-In-Line Small-Outline (SO) Package

SYMBOL	INCHES		MILLIMETERS		NOTES
	MIN.	MAX.	MIN.	MAX.	
A	0.0532	0.0688	1.35	1.75	
A <sub>1</sub>	0.0040	0.0098	0.10	0.25	
B	0.0138	0.020	0.35	0.508	
C	0.0075	0.0098	0.19	0.25	
D	0.3367	0.3444	8.55	8.75	4
E	0.1497	0.1574	3.80	4.00	4
e	0.050 BSC		1.27 BSC		
H	0.2284	0.2440	5.80	6.20	
h	0.0099	0.0196	0.25	0.50	5
L	0.016	0.050	0.40	1.27	6
N	14		14		7
α	0° 8°		0° 8°		

Notes: 1, 2, 3, 8, 9

92CS-38924R2

M Suffix (JEDEC MS-012AC)  
16-Lead Dual-In-Line Small-Outline (SO) Package

SYMBOL	INCHES		MILLIMETERS		NOTES
	MIN.	MAX.	MIN.	MAX.	
A	0.0532	0.0688	1.35	1.75	
A <sub>1</sub>	0.0040	0.0098	0.10	0.25	
B	0.0138	0.020	0.35	0.508	
C	0.0075	0.0098	0.19	0.25	
D	0.3859	0.3937	9.80	10.00	4
E	0.1497	0.1574	3.80	4.00	4
e	0.050 BSC		1.27 BSC		
H	0.2284	0.2440	5.80	6.20	
h	0.0099	0.0196	0.25	0.50	5
L	0.016	0.050	0.40	1.27	6
N	16		16		7
α	0° 8°		0° 8°		

Notes: 1, 2, 3, 8, 9

92CS-38925R2

M Suffix (JEDEC MS-013AC)  
20-Lead Dual-In-Line Small-Outline (SO) Package

SYMBOL	INCHES		MILLIMETERS		NOTES
	MIN.	MAX.	MIN.	MAX.	
A	0.0926	0.1043	2.35	2.65	
A <sub>1</sub>	0.0040	0.0118	0.10	0.30	
B	0.0138	0.020	0.35	0.508	
C	0.0091	0.0125	0.23	0.32	
D	0.4861	0.5118	12.60	13.00	4
E	0.2914	0.2992	7.40	7.60	4
e	0.050 BSC		1.27 BSC		
H	0.394	0.419	10.00	10.65	
h	0.010	0.029	0.25	0.75	5
L	0.016	0.050	0.40	1.27	6
N	20		20		7
α	0° 8°		0° 8°		

Notes: 1, 2, 3, 8, 9

92CS-38926R2

M Suffix (JEDEC MS-013AD)  
24-Lead Dual-In-Line Small-Outline (SO) Package

SYMBOL	INCHES		MILLIMETERS		NOTES
	MIN.	MAX.	MIN.	MAX.	
A	0.0926	0.1043	2.35	2.65	
A <sub>1</sub>	0.0040	0.0118	0.10	0.30	
B	0.0138	0.020	0.35	0.508	
C	0.0091	0.0125	0.23	0.32	
D	0.5985	0.6141	15.20	15.60	4
E	0.2914	0.2992	7.40	7.60	4
e	0.050 BSC		1.27 BSC		
H	0.394	0.419	10.00	10.65	
h	0.010	0.029	0.25	0.75	5
L	0.016	0.050	0.40	1.27	6
N	24		24		7
α	0° 8°		0° 8°		

Notes: 1, 2, 3, 8, 9

92CS-39037R2