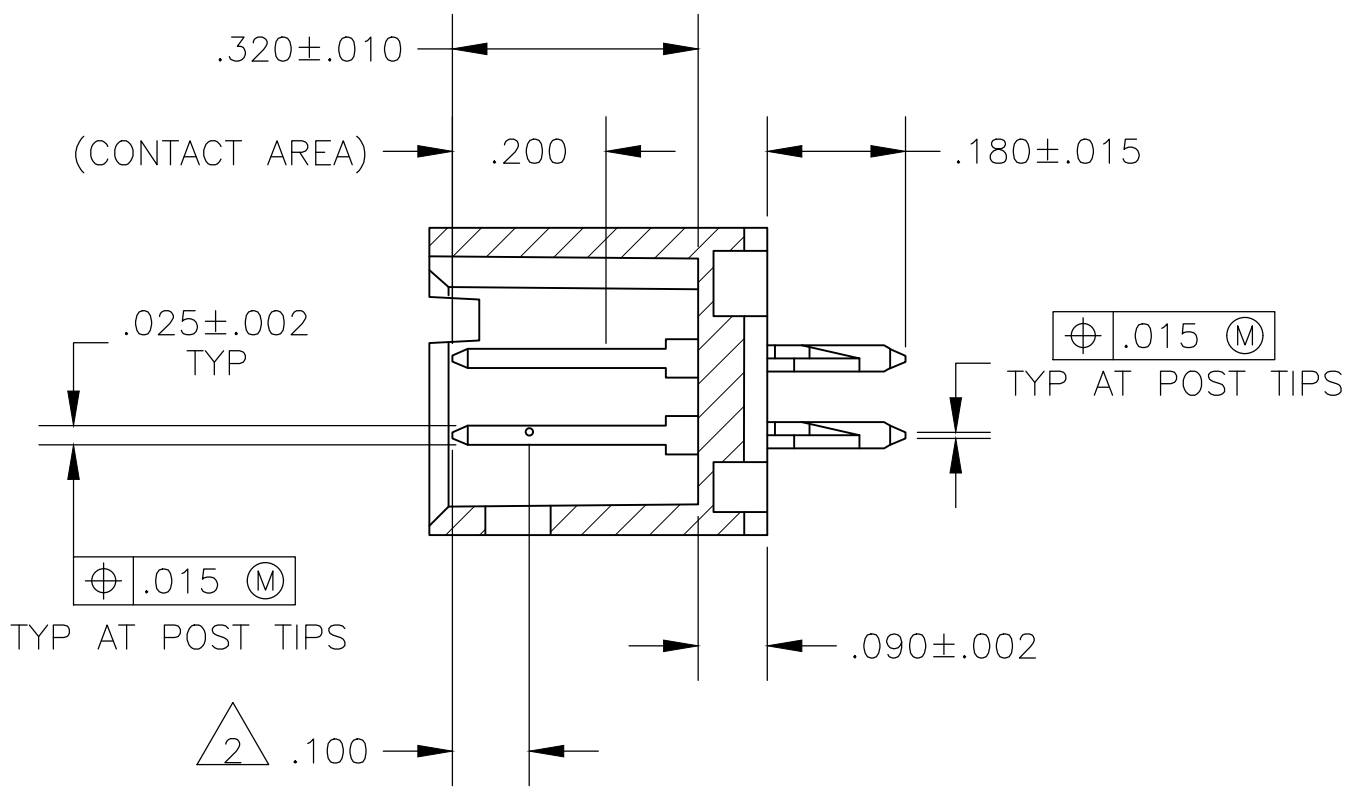
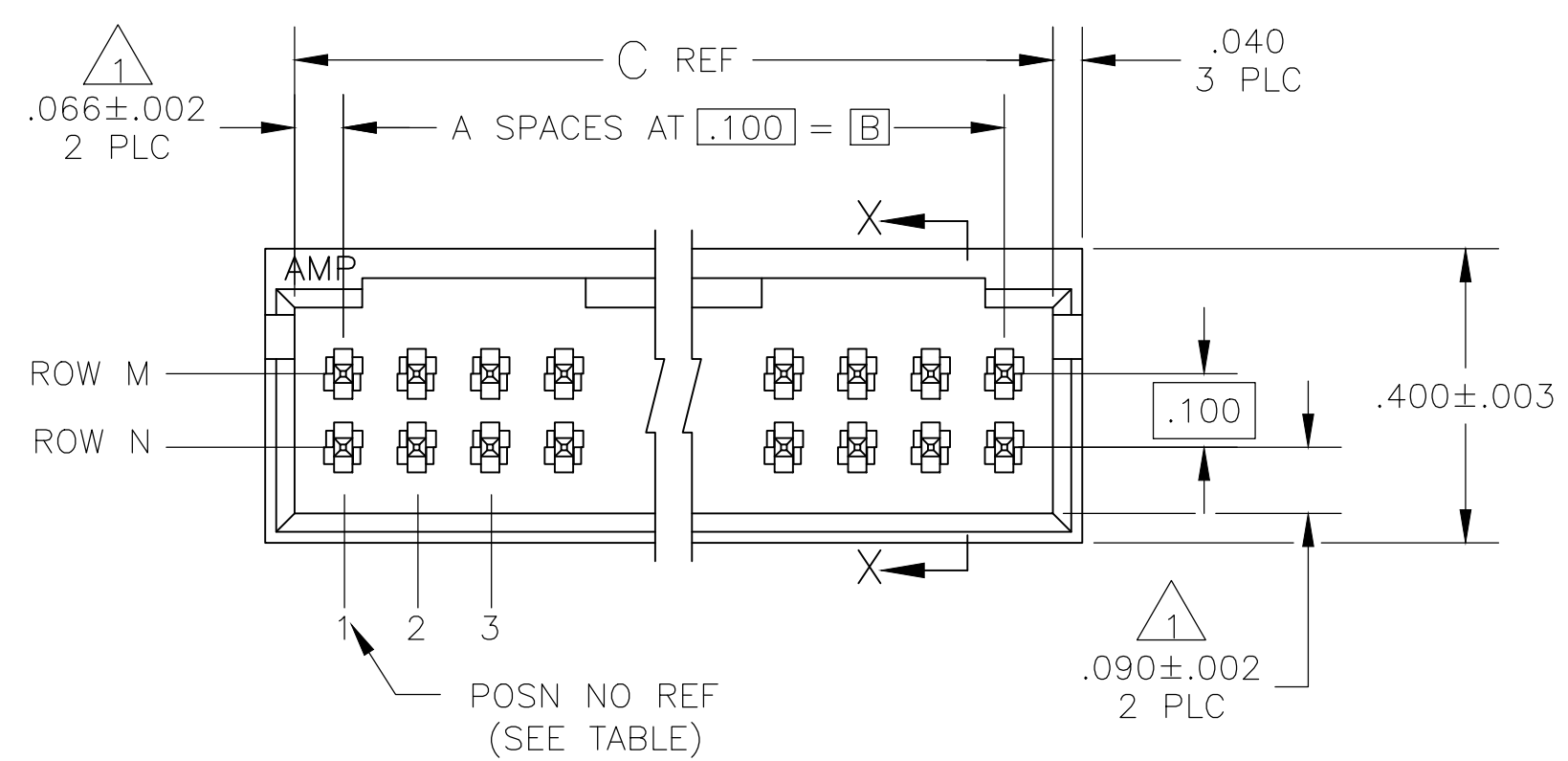
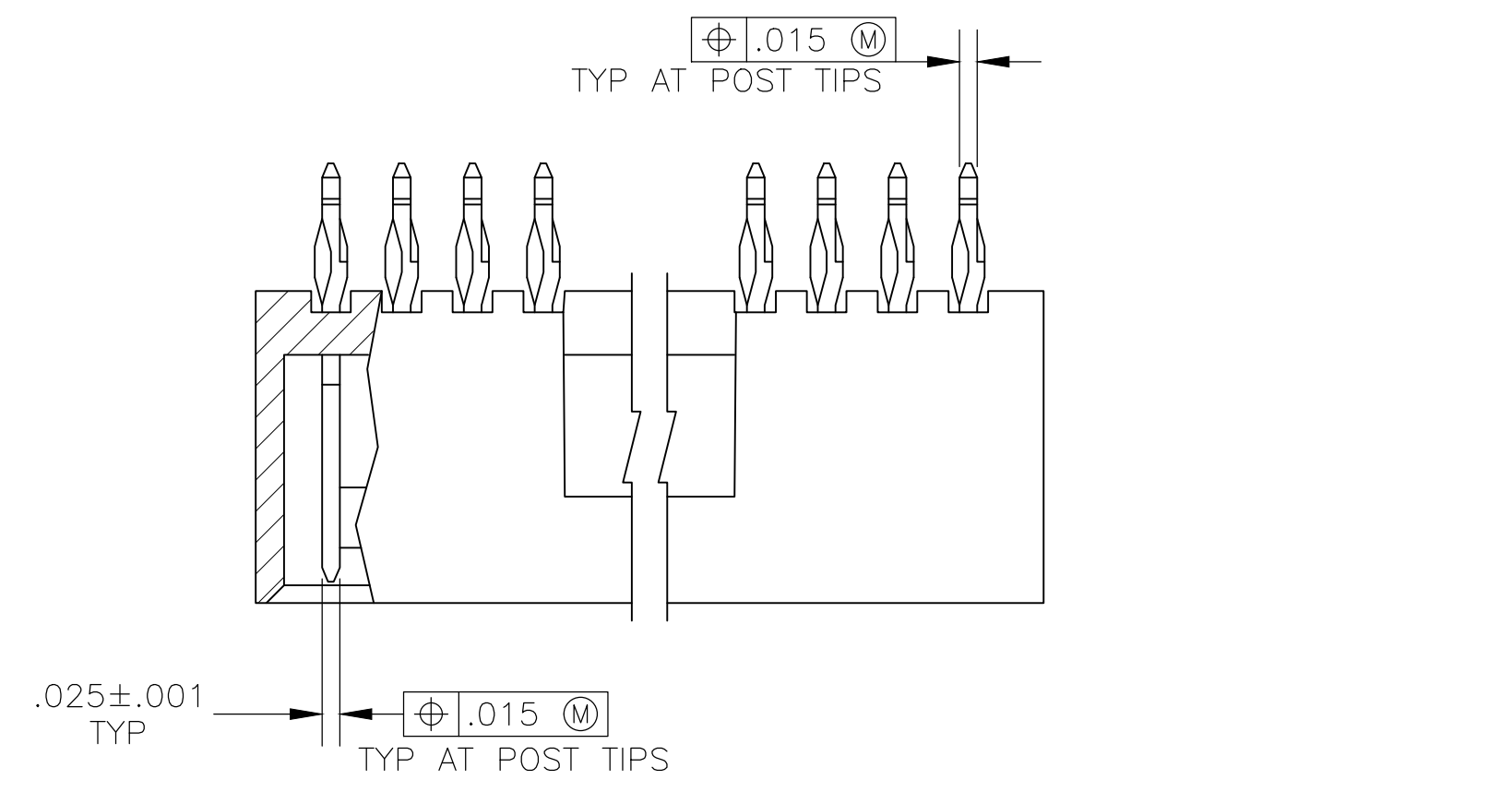
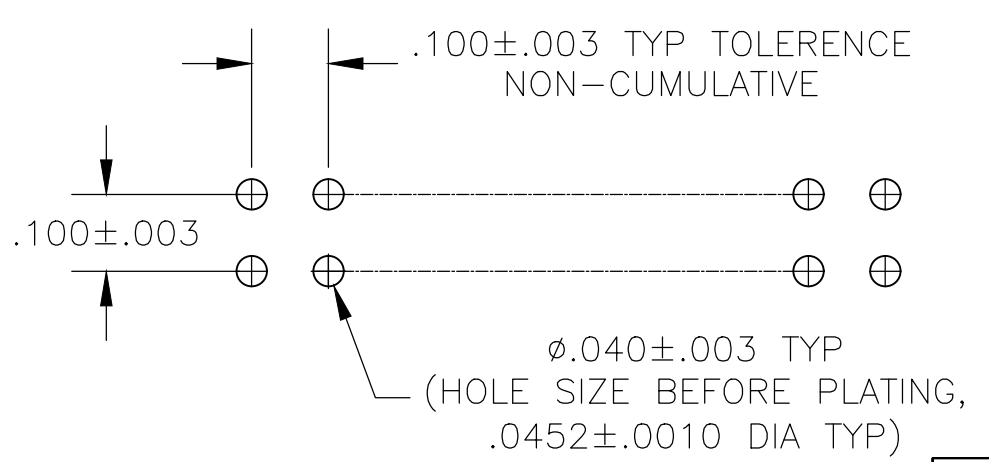
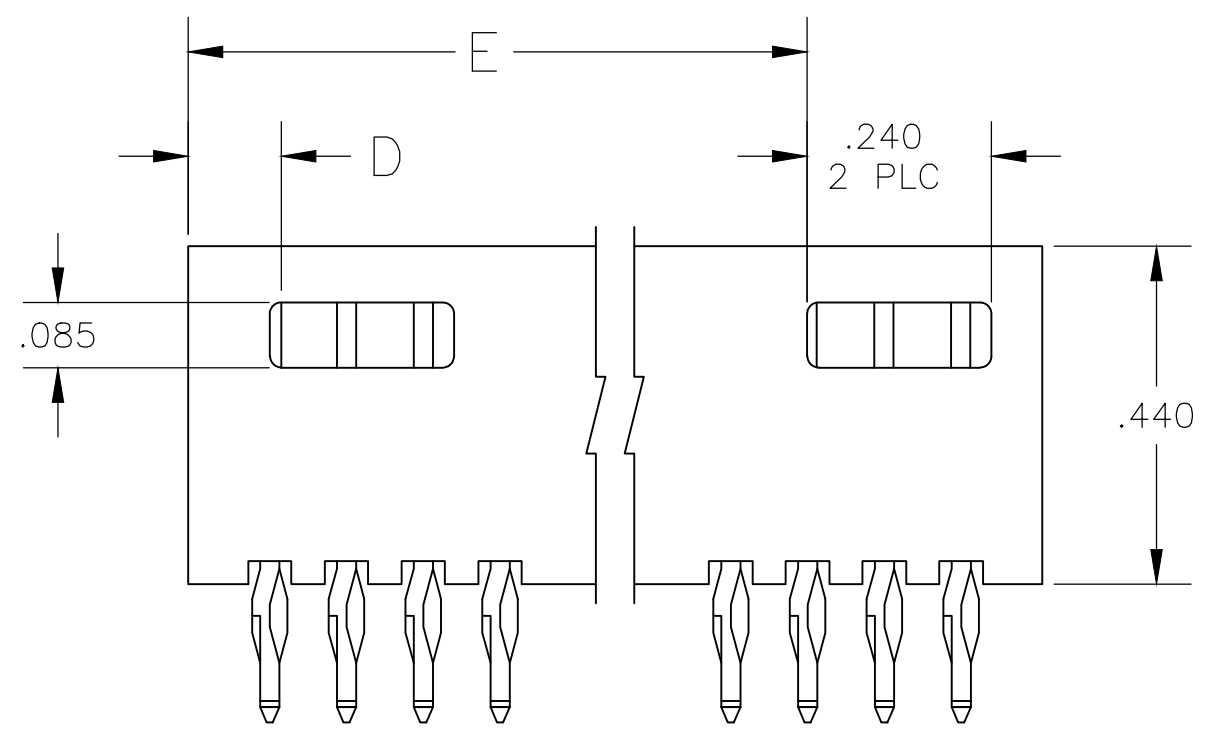


REVISIONS					
P	LTR	DESCRIPTION	DATE	DWN	APVD
C1		PART STATUS UPATED IN PART LIST TABLE	16FEB2018	SD	PS

- 1 THE NOTED DIMENSIONS APPLY AT THE INTERSECTION OF THE POST AND HOUSING.
- 2 POINT OF MEASUREMENT FOR PLATING THICKNESS.
- 3 FINISH: POSTS: 0.000030 GOLD ON CONTACT AREA, .000100 TO 0.000200 BRIGHT TIN LEAD ON SOLDER TAIL, ALL OVER .000050 NICKEL.
- 4 FINISH: POSTS: 0.000030 GOLD ON CONTACT AREA, .000100 TO 0.000200 MATTE TIN ON SOLDER TAIL, ALL OVER .000050 NICKEL.
- 5 OBSOLETE



SECTION X-X



RECOMMENDED HOLE LAYOUT

PLATING	4	NONE	2	-	.106	.432	.300	3	8	5-1571731-1	
	3	NONE	2	-	.106	.432	.300	3	8	-1571731-1	
		ROW M	ROW N								
		POST NO. OMITTED					E	D	C	B	A
										NO OF POSN.	
										ASSEMBLY PART NUMBER	

THIS DRAWING IS A CONTROLLED DOCUMENT.		DWN	100CT03		TE Connectivity	
DIMENSIONS: INCHES		R BROWN	100CT03		NAME	
TOLERANCES UNLESS OTHERWISE SPECIFIED:		CHK	J GESFORD	HDR ASSY, MOD II, COMPLIANT		
0 PLC	± -	APVD	J GESFORD	PIN, DR, .100 X .100 CL		
1 PLC	± -	PRODUCT SPEC		4 SIDED SHROUD, SELECT LOAD		
2 PLC	± -	APPLICATION SPEC		SIZE	CAGE CODE	DRAWING NO
3 PLC	± .005			A2	00779	C=1571731
4 PLC	± -			CUSTOMER DRAWING		RESTRICTED TO
ANGLES	± -	FINISH	SEE TABLE	SCALE	SHEET	REV
MATERIAL: HOUSING: FLAME RETARDANT THERMOPLASTIC COLOR-BLACK POST Cu-Ni-Si.				4:1	1 of 1	C1