



| | | | |
|------|---------|---------|------|
| REV. | ECN NO. | REVISED | DATE |
| | | | |

NOTE:

1.MATERIAL:

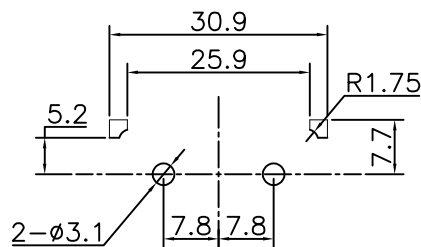
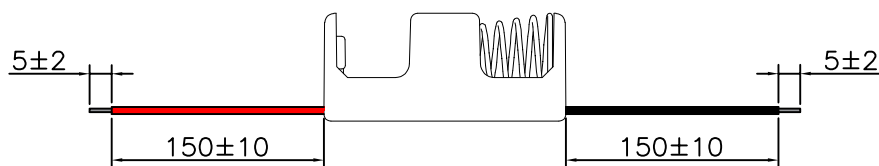
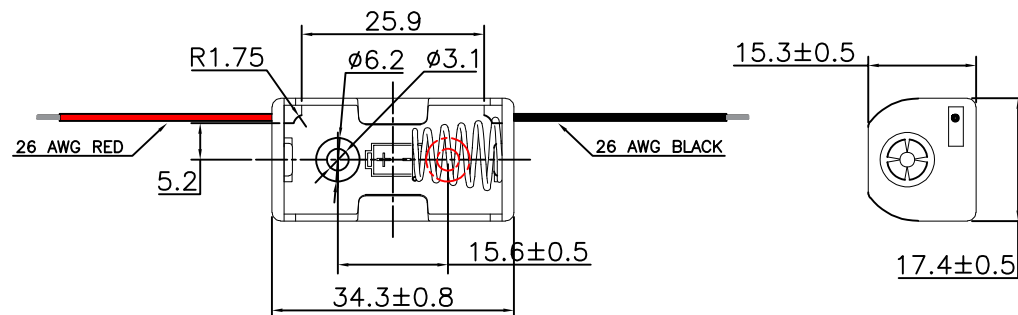
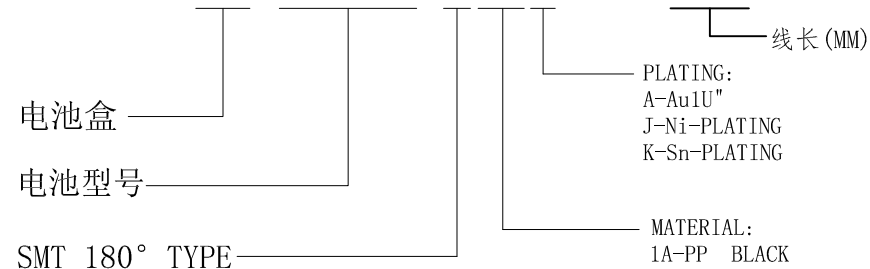
- a.HOUSING:PP RESIN
- b.SPRING:SPRING WIRE $\phi 0.64\text{MM}$ 65C
(SURFACE PLATING: Ni-PLATING)
SEE ORDERING INFORMATION

2.ELECTRIC:

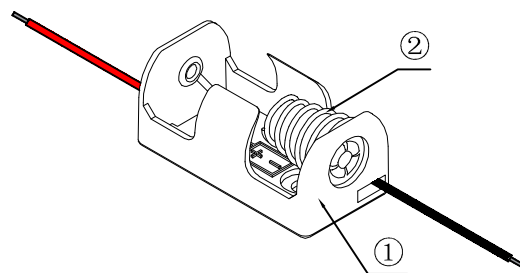
- a.DIELECTNIC VOLTAGE: 270V AC ONE MINUTE
- b.OPERATING TEMPERATURE: $-10^{\circ}\text{C} \sim +80^{\circ}\text{C}$

ORDERING INFORMATION

BH-14250-B1AJ002-150



PCB Layout Diagram
TOP View



| | | | |
|--|---------------------------------|---|-----------------|
| UNLESS OTHERWISE SPECIFIED TOLERANCES | | MYOUNG 美阳 www.meiyangdz.com | |
| DECIMALS: X :±0.30 X.X :±0.25 X.XX :±0.20 X.XXX :±0.10 | ANGLES: X :±1° X.X :±0.5° | DSND YangFeng | DATE 2023-04-14 |
| WEIGHT: | | CHKD ZhouRuicai | DATE 2023-04-14 |
| SHEET 1 OF 1 | | APVD XueShunYong | DATE 2023-04-14 |
| TITLE: 电池盒BH-14250-1J 弹簧(26#线长150mm剥皮上锡5mm) | | SCALE: | VIEW: |
| PART NO.: BH-14250-B1AJ002-150 | | SIZE: A4 | OBJECT: MY |
| DRAW NO.:WD-CP-0369 | | UNIT: mm | REV.: A/1 |

| | | | | |
|-----|-----------|------|--------------------------------------|-----------------|
| 2 | SPRING | 1 | SPRING WIRE $\phi 0.64\text{MM}$ 65C | Ni-Plating |
| 1 | HOUSING | 1 | PP RESIN | BLACK |
| NO. | PART NAME | Q'TY | MATERIAL | PLATING & COLOR |