

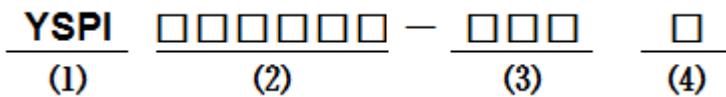
■ Features

- Molding Inductor.
- Low Profile,Low Temp.
- Large Current(Over 15A).
- Customize For Different Need.
- Operating temperature:-55℃ ~ +125℃(Including self - temperature rise).

■ Applications

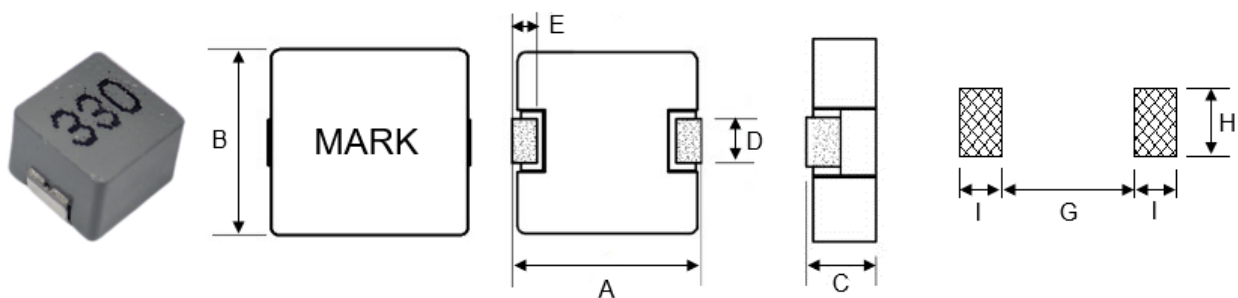
- General Electronic.
- Video Device,TV,TFT.
- Power Module for PC.
- NB/Lap Top Computer.
- Server,VGA Card/Module.

■ Product Identification



- (1) : Type
- (2) : Dimensions
- (3) : Inductance value
- (4) : Inductance Tolerance: N=±30%,M=±20%

■ Shapes and Dimensions (Unit: mm)



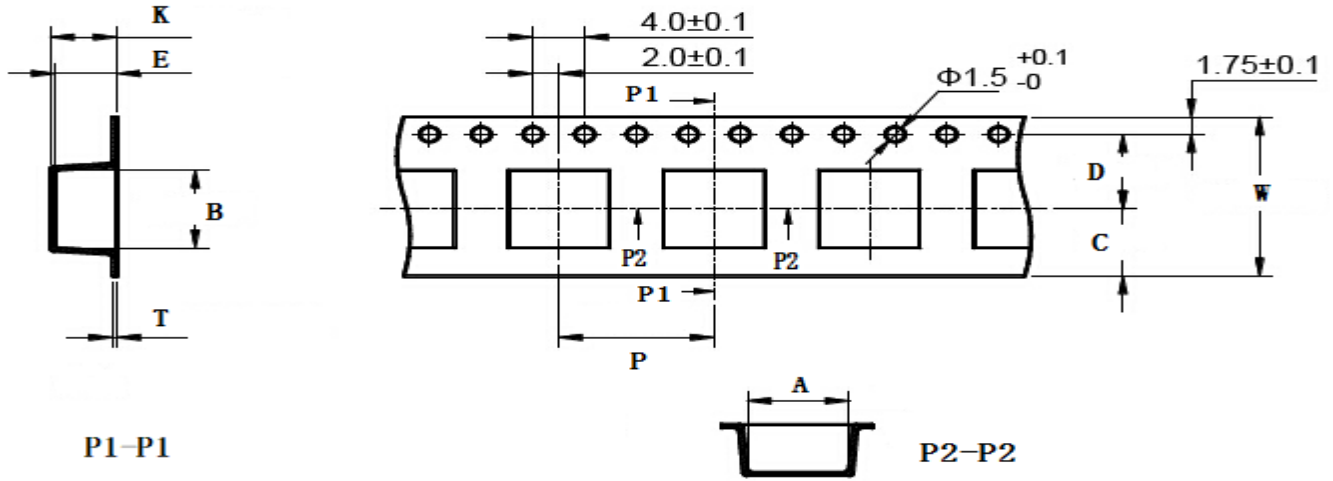
| TYPE | A | B | C Max. | D | E | G Ref. | H Ref. | I Ref. |
|------------|----------|----------|--------|-------------------------------|---------|--------|--------|--------|
| YSPI1040TP | 10.5±1.0 | 10.3±0.3 | 4.0 | 2.8±0.3 Flatten OR 3.0±0.3 | 2.0±0.5 | 6.0 | 4.0 | 3.5 |

■ YSPI1040TP Series

| Part Number | Inductance (uH) @100KHz | DC Resistance (mΩ) | | Heat Rating Current (A) | Saturation Current (A) |
|-----------------|----------------------------|--------------------|-------|----------------------------|---------------------------|
| | | Typ. | Max. | | |
| YSPI1040TP-R19M | 0.19±20% | 0.8 | 1.0 | 40.0 | 100.0 |
| YSPI1040TP-R22M | 0.22±20% | 0.7 | 0.8 | 36.0 | 80.0 |
| YSPI1040TP-R33M | 0.33±20% | 1.1 | 1.3 | 32.0 | 70.0 |
| YSPI1040TP-R36M | 0.36±20% | 1.1 | 1.4 | 31.0 | 65.0 |
| YSPI1040TP-R47M | 0.47±20% | 1.2 | 1.4 | 30.0 | 60.0 |
| YSPI1040TP-R56M | 0.56±20% | 1.7 | 2.0 | 28.0 | 55.0 |
| YSPI1040TP-R68M | 0.68±20% | 2.2 | 2.6 | 25.0 | 50.0 |
| YSPI1040TP-R82M | 0.82±20% | 2.1 | 2.5 | 24.0 | 41.0 |
| YSPI1040TP-1R0M | 1.0±20% | 2.2 | 2.5 | 22.0 | 40.0 |
| YSPI1040TP-1R2M | 1.2±20% | 2.9 | 3.5 | 20.0 | 35.0 |
| YSPI1040TP-1R5M | 1.5±20% | 4.3 | 5.2 | 18.0 | 30.0 |
| YSPI1040TP-2R2M | 2.2±20% | 5.3 | 6.5 | 16.0 | 28.0 |
| YSPI1040TP-3R3M | 3.3±20% | 10.3 | 13.0 | 14.0 | 25.0 |
| YSPI1040TP-4R7M | 4.7±20% | 15.3 | 18.0 | 12.0 | 20.0 |
| YSPI1040TP-5R6M | 5.6±20% | 15.5 | 18.5 | 10.0 | 16.0 |
| YSPI1040TP-6R8M | 6.8±20% | 21.5 | 26.0 | 9.0 | 13.5 |
| YSPI1040TP-8R2M | 8.2±20% | 30.0 | 36.0 | 8.0 | 14.0 |
| YSPI1040TP-100M | 10±20% | 32.0 | 38.0 | 7.0 | 13.0 |
| YSPI1040TP-220M | 22±20% | 59.4 | 65.0 | 6.0 | 9.0 |
| YSPI1040TP-330M | 33±20% | 105.0 | 118.0 | 4.5 | 7.5 |
| YSPI1040TP-470M | 47±20% | 129.0 | 145.0 | 3.6 | 5.5 |

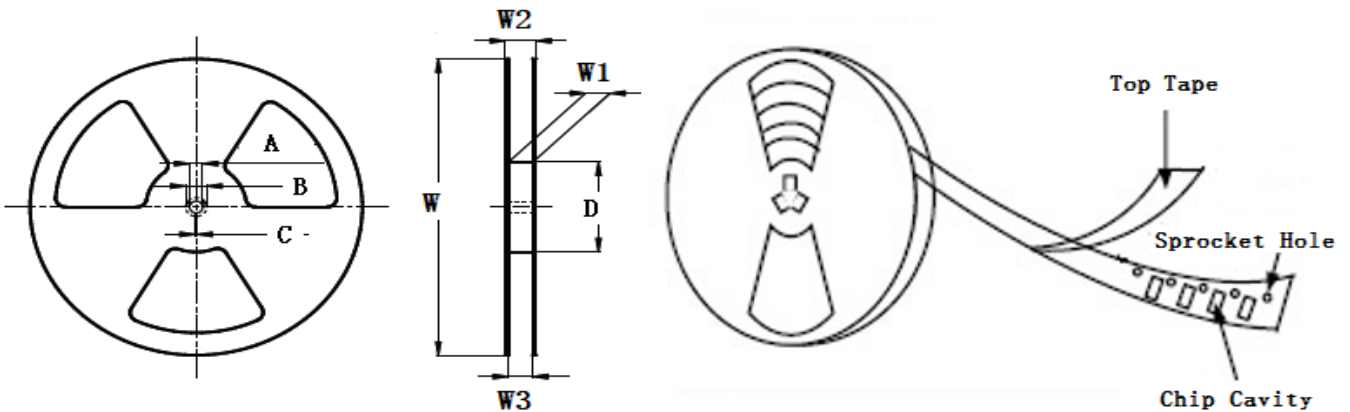
- ※ The saturation current value is the DC current value having inductance decrease down to 30%.(at 20°C)
- ※ The temperature rise current value is the DC current value having temperature increase up to 40°C. (at 20°C)
- ※ The rated current is the DC current value that satisfies both of current value saturation current value and temperature rise current value.

■ Taping Dimensions(Unit:mm)



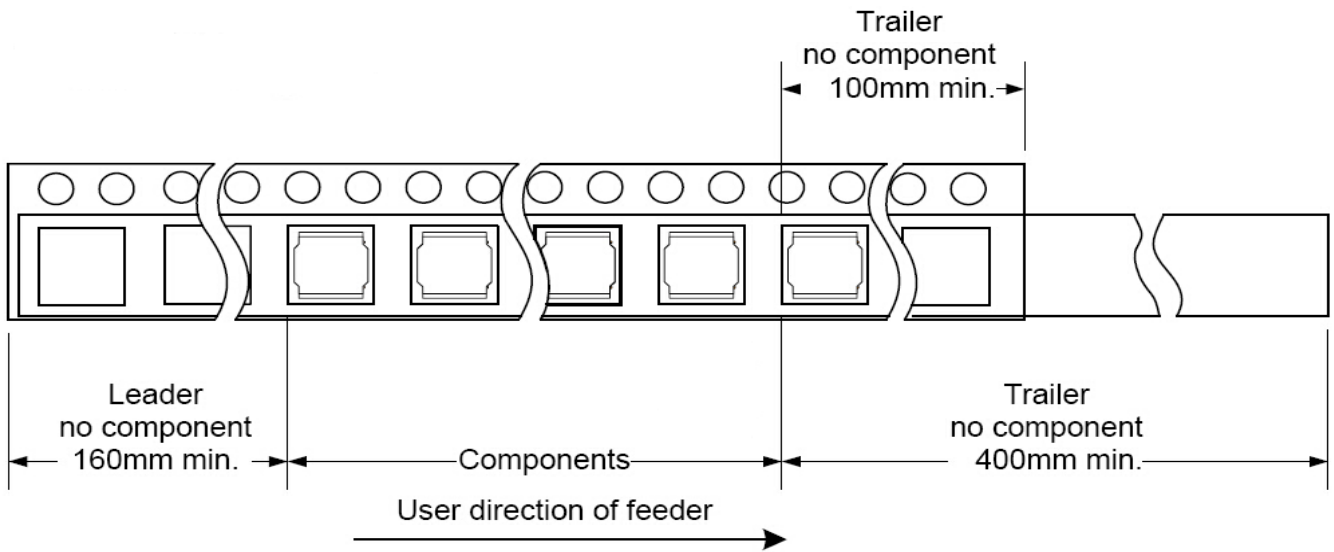
| TYPE | W | A | B | C | D | E | P | K Ref | T | MPQ |
|------------|----------|----------|----------|-------|----------|---------|----------|----------|-----------|------|
| YSPI1040TP | 24.0±0.3 | 10.8±0.1 | 11.3±0.1 | 10.75 | 11.5±0.1 | 4.4±0.1 | 16.0±0.1 | 4.6 | 0.40±0.05 | 1000 |

■ Reel Dimensions(Unit:mm)



| TYPE | W | W1 | W2 | W3 | A | B | C | D |
|------------|---------|----------|---------|----------|-----------|-----------|----------|---------|
| YSPI1040TP | 330±2.0 | 24.4±2.0 | 30.4MAX | 23.9 Min | 13.0±0.50 | 21.0±0.80 | 2.0±0.50 | 100 Min |

Direction of rolling



Cover tape peel off condition



Cover tape peel force shall be 0.1N to 1.3N.

Reference peel speed 300 ± 10 mm/min.