

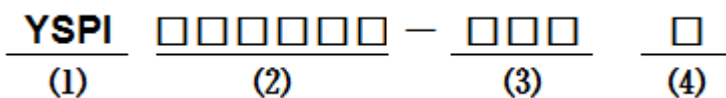
■ Features

- Molding Inductor.
- Low Profile,Low Temp.
- Large Current(Over 15A).
- Customize For Different Need.
- Operating temperature:-40°C ~ +125°C.

■ Applications

- General Electronic.
- Video Device,TV,TFT.
- Power Module for PC.
- NB/Lap Top Computer.
- Server,VGA Card/Module.

■ Product Identification



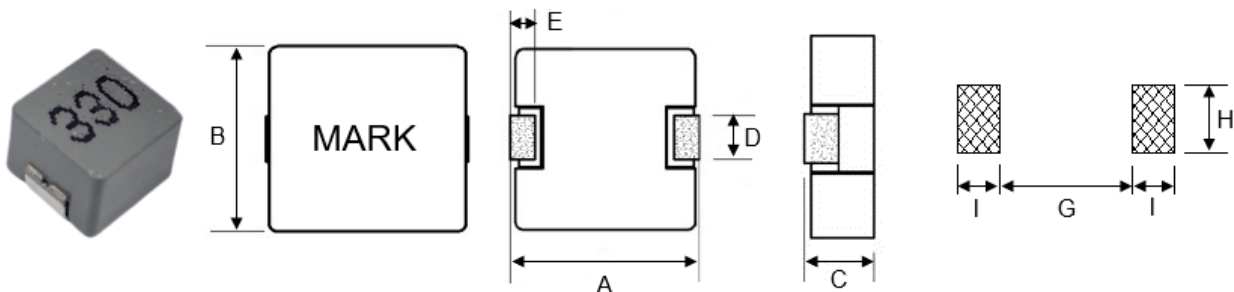
(1) : Type

(2) : Dimensions

(3) : Inductance value

(4) : Inductance Tolerance : N=±30%,M=±20%

■ Shapes and Dimensions (Unit: mm)



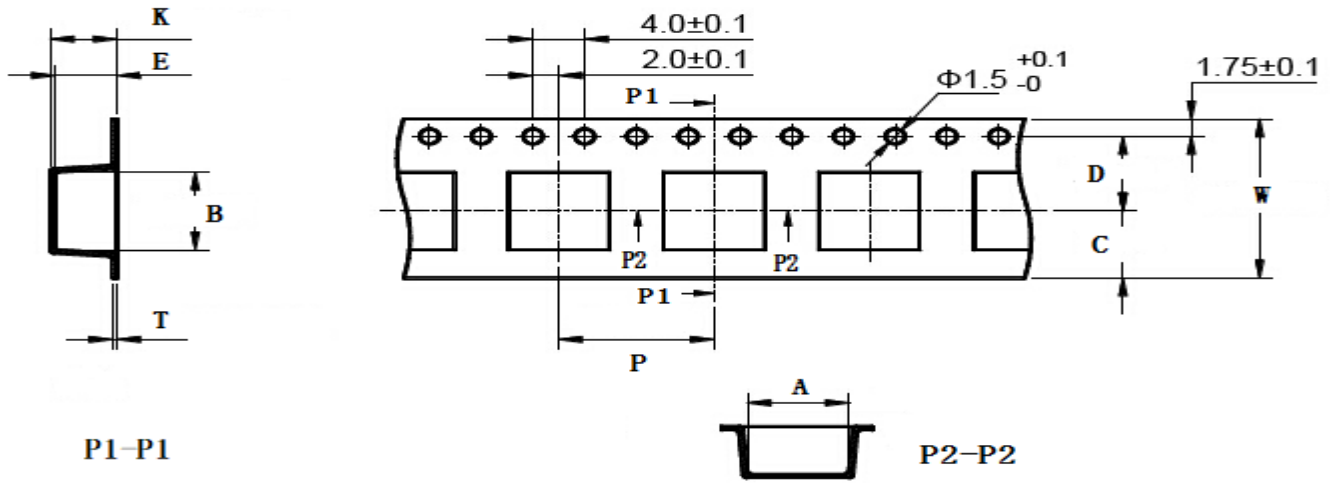
TYPE	A	B	C Max.	D	E	G Ref.	H Ref.	I Ref.
YSPI0530TP	5.5±0.3	5.18±0.3	3.0	2.0±0.3	1.2±0.3	3.0	2.5	2.0

■ YSPI0530TP Series

Part Number	Inductance (μ H) @100KHz	DC Resistance (m Ω)		Heat Rating Current (A)	Saturation Current (A)
		Typ.	Max.		
YSPI0530TP-R10M	0.10	2.60	3.30	23.0	38.0
YSPI0530TP-R15M	0.15	2.80	3.50	22.0	35.0
YSPI0530TP-R22M	0.22	4.00	5.00	19.0	32.0
YSPI0530TP-R33M	0.33	4.60	6.00	18.0	28.0
YSPI0530TP-R47M	0.47	6.50	8.00	16.0	26.0
YSPI0530TP-R68M	0.68	8.00	10.0	14.0	24.0
YSPI0530TP-1R0M	1.0	11.5	14.0	12.0	18.0
YSPI0530TP-1R2M	1.2	11.5	14.0	11.0	16.0
YSPI0530TP-1R5M	1.5	15.5	18.5	9.0	14.0
YSPI0530TP-2R2M	2.2	25.5	31.0	8.0	13.0
YSPI0530TP-3R3M	3.3	32.5	37.0	7.0	11.0
YSPI0530TP-4R7M	4.7	56.0	66.0	5.5	9.0
YSPI0530TP-5R6M	5.6	63.0	72.0	5.0	8.0
YSPI0530TP-6R8M	6.8	76.0	86.0	4.5	7.0
YSPI0530TP-100M	10	111.0	122.0	4.0	6.0
YSPI0530TP-150M	15	153.0	166.0	3.0	5.0
YSPI0530TP-330M	33	315.0	340.0	2.0	3.5

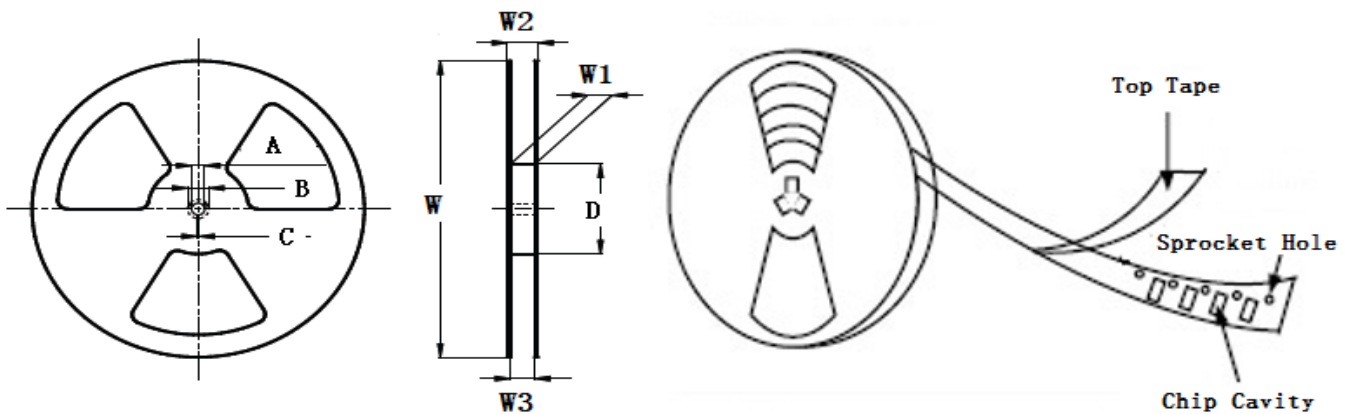
- ※ The saturation current value is the DC current value having inductance decrease down to 30%. (at 20°C)
- ※ The temperature rise current value is the DC current value having temperature increase up to 40°C. (at 20°C)
- ※ The rated current is the DC current value that satisfies both of current value saturation current value and temperature rise current value.

■ Taping Dimensions(Unit:mm)



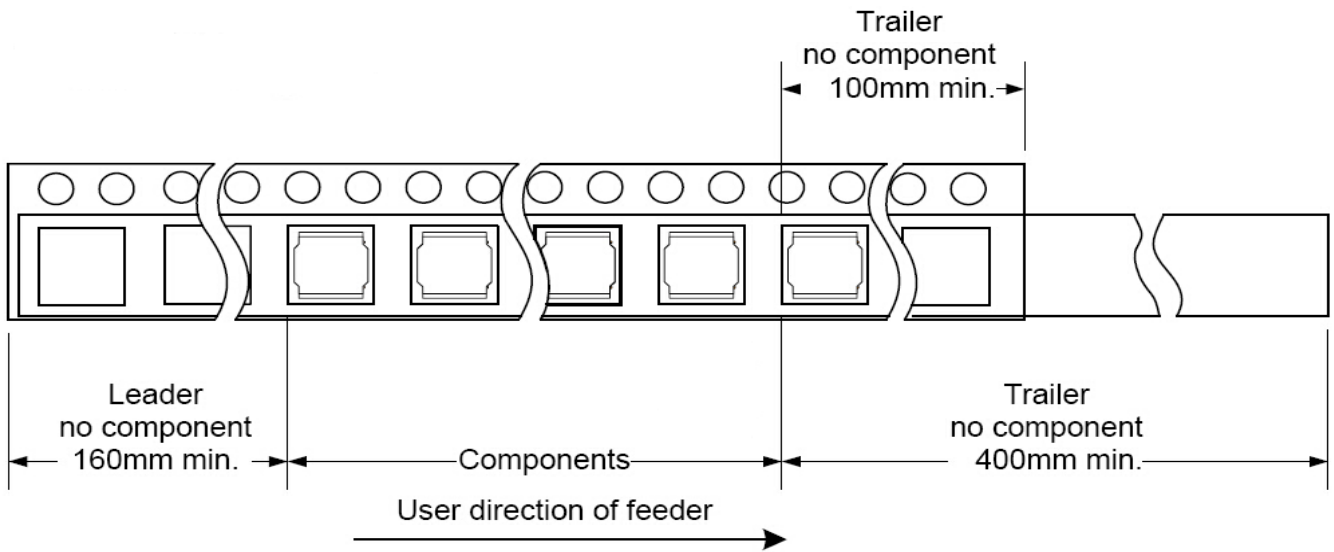
TYPE	W	A	B	C	D	E	P	K Ref	T	MPQ
YSPI0530TP	12±0.3	5.1±0.1	5.30±0.1	4.75	5.5±0.1	3.4±0.1	8±0.1	3.2	0.35±0.05	2000

■ Reel Dimensions(Unit:mm)



TYPE	W	W1	W2	W3	A	B	C	D
YSPI0530TP	330±2.0	12.4±2.00	18.4MAX	11.9 Min	13.0±0.50	21.0±0.80	2.0±0.50	100 Min

Direction of rolling



Cover tape peel off condition



Cover tape peel force shall be 0.1N to 1.3N.

Reference peel speed 300±10mm/min.