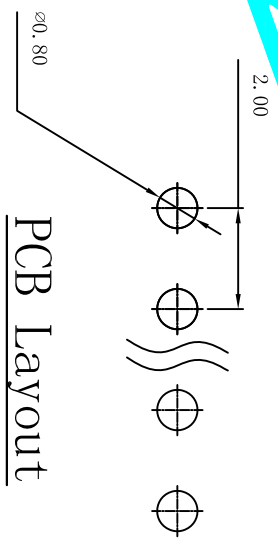


Technical Data
 Material: Brass
 Contact material: Brass
 Plating: Gold Flash
 Insulator material: Black polyester UL94V-0
 Standard: 6T+30%G. F

Electrical:
 Current rating: 1.5Amps/contact max.
 Contact resistance: $\leq 20m\ \Omega$ /contact
 Insulation resistance: $\geq 1000M\ \Omega$ at V=100V
 Withstanding voltage: 450V AC/minute

Mechanical:
 Soldering temperature: $+260^{\circ}C$, 4s max
 UNSPECIFIED TOLERANCE: ± 0.20



PCB Layout

A=2.0**n*P ± 0.40
 B=2.0**n*P-2.0 ± 0.20
 Pin Number=1 ~ 40

APPROVALS		DATE	DRAWING NO.	
DRAWN	G.M.Chen	2015/5/22	D7200W-11-XX-32	
CHECKED			ELECTRONICS CO.,LTD	
APPROVALS			CONNECTOR	
TOLERANCES ARE		ANGLE	SCALE:	SHEET
30 ^{±0.15}	±0.30	±2°	1:1	1 OF 1
10 ^{±0.20}	±0.20			
5 ^{±0.10}	±0.10			
~ 5	±0.10			
ECN NO.	REV.	DATE.	DESCRIPTION.	CHANGE.
	A		NEW	