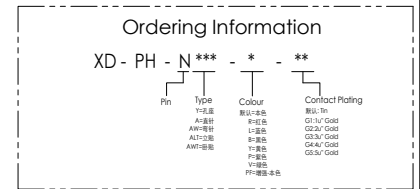
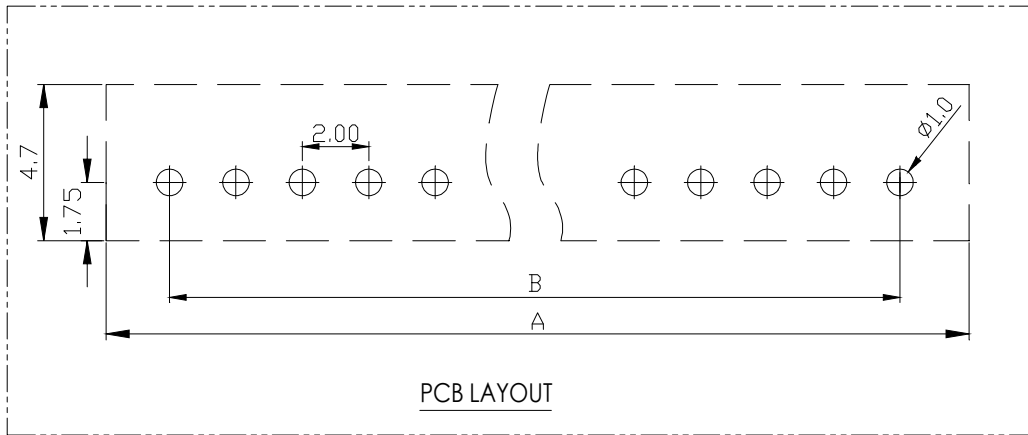


- SPECIFICATIONS
1. Current Rating: 2A AC, DC
  2. Voltage Rating: 250V AC, DC
  3. Temperature Range: -25°C~ +85°C
  4. Contact Resistance: 20mΩ Max
  5. Insulation Resistance: 1000mΩ Min
  6. Withstanding Voltage: 1000V AC/minute
  7. Material: Wafer Nylon66 UL94-VO(2)  
Pin Brass Tin-plated

Circuit	Part NO.	Dimensions mm	
		A	B
2	XD-PH-2A-P	2.00	6.00
3	XD-PH-3A-P	4.00	8.00
4	XD-PH-4A-P	6.00	10.00
5	XD-PH-5A-P	8.00	12.00
6	XD-PH-6A-P	10.00	14.00
7	XD-PH-7A-P	12.00	16.00
8	XD-PH-8A-P	14.00	18.00
9	XD-PH-9A-P	16.00	20.00
10	XD-PH-10A-P	18.00	22.00
11	XD-PH-11A-P	20.00	24.00
12	XD-PH-12A-P	22.00	26.00
13	XD-PH-13A-P	24.00	28.00
14	XD-PH-14A-P	26.00	30.00
15	XD-PH-15A-P	28.00	32.00
16	XD-PH-16A-P	30.00	34.00



GENERAL TOLERANCE			制图 DRAWING	10	深圳讯答科技有限公司 ShenzhenXunDaTechnology Co.,Ltd			
DIM TOL			审核 CHECK					
X.X ±0.30			批准 APPROVAL		产品料号 PART NO.	XD-PH-NA-P	单位 UNITS	mm
X.XX ±0.20			投影 Projection		材料 MATERIAL		页次 SHEET	1/1
X.XXX ±0.10								
Angle ±3.0°								
序号 No.	变更内容 MODIFY CONTENT	日期 MODIFY DATE						