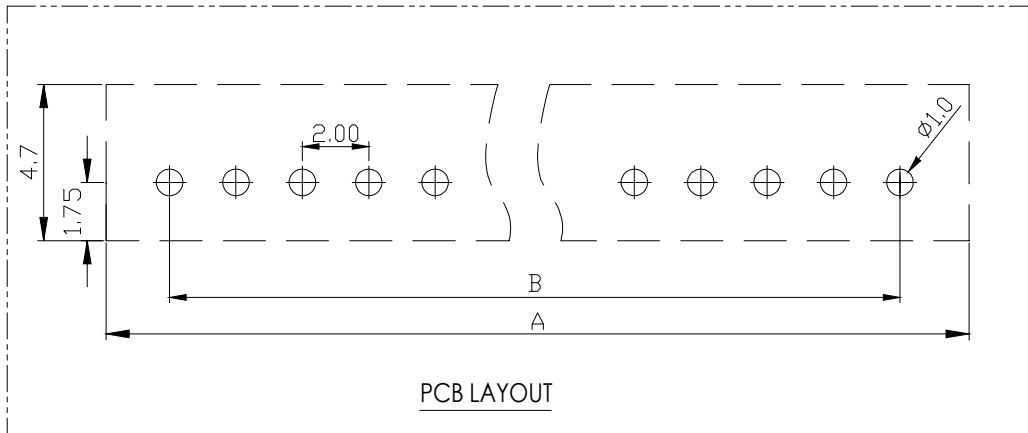


- SPECIFICATIONS**
- Current Rating: 2A AC, DC
  - Voltage Rating: 250V AC, DC
  - Temperature Range: -25°C~ +85°C
  - Contact Resistance: 20mΩ Max
  - Insulation Resistance: 1000mΩ Min
  - Withstanding Voltage: 1000V AC/minute
  - Material: Wafer Nylon66 UL94-VO(2)  
Pin Brass Tin-plated

Circuit	Part NO.	Dimensions mm	
		A	B
2	XD-PH-2A-L	2.00	6.00
3	XD-PH-3A-L	4.00	8.00
4	XD-PH-4A-L	6.00	10.00
5	XD-PH-5A-L	8.00	12.00
6	XD-PH-6A-L	10.00	14.00
7	XD-PH-7A-L	12.00	16.00
8	XD-PH-8A-L	14.00	18.00
9	XD-PH-9A-L	16.00	20.00
10	XD-PH-10A-L	18.00	22.00
11	XD-PH-11A-L	20.00	24.00
12	XD-PH-12A-L	22.00	26.00
13	XD-PH-13A-L	24.00	28.00
14	XD-PH-14A-L	26.00	30.00
15	XD-PH-15A-L	28.00	32.00
16	XD-PH-16A-L	30.00	34.00



**Ordering Information**

XD - PH - N \*\*\* - \* - \*\*

Pin	Type	Colour	Contact Plating
	1=直插 A=带脚 AW=带脚 AL=带脚 AW=带脚	1=蓝色 2=红色 3=黄色 4=绿色 5=白色 6=黑色 7=棕色 8=紫色 9=灰色 0=透明	1=无镀 2=Sn 3=Sn 4=Sn 5=Sn 6=Sn 7=Sn 8=Sn 9=Sn 0=Sn

			GENERAL TOLERANCE	制图 DRAWING	10	<b>深圳讯答科技有限公司</b> ShenzhenXunDaTechnology Co.,Ltd			
			DIM TOL	审核 CHECK					产品名称 TITLE
			X.X ±0.30	批准 APPROVAL		产品料号 PART NO.	XD-PH-NA-L	单位 UNITS	mm
			X.XX ±0.20	比例 SCALE		材料 MATERIAL		页次 SHEET	1/1
			X.XXX ±0.10	投影 Projection					
序号 No.	变更内容 MODIFY CONTENT	日期 MODIFY DATE	Angle ±3.0°						