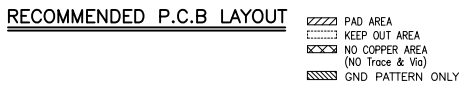


SPECIFICATION

- 1. Material:**
 Housing: LCP S475, Rated UL94V-0, Color: Black.
 Contacts: C7025 TM03, T=0.20
 Matte Tin 80u"MIN. at Solder Tail,
 Plating 15u" on Contact Area. Over Nickel 50u"MIN.
 Top Shell: SUS304 3/4H, T=0.15
 Goldflash at Solder Tail, Over Nickel 30u"MIN. Plated.
 Bottom Shell: SUS304 1/2H, T=0.15
 Goldflash at Solder Tail, Over Nickel 30u"MIN. Plated.
 Lock Pin: SUS304 3/4H, T=0.20, Not Plating.
 Spring: SWP-B, Not Plating.
 Rod: SUS304H, Not Plating.
- 2. Electrical Characteristics:**
 Rated voltage : 500Vrms AC for 1 min.
 Current rating : 1.0 A.Min.per pin.
 Operating Temperature: -25°C~+85°C.
 Insulation resistance: 1000M ohms Min. at 500VDC for 1ms.
 Dielectric withstanding voltage: 500 VAC/1minute.
 Contact resistance: Initial: 55m ohms max. Final: Δ 40m ohms max.
 Insertion Force: 25N Max.
 Removal Force: 0.5N Min. 20N Max.
 Inverse Insertion: 50N Min.
 Mating cycle: 12000 cycles, Spring is not breaking.



深圳市华宇创精密电子有限公司			
TOLERANCE: XX ±0.30 XX ±0.25 XXX ±0.15 X* ±2° X.X* ±0.5°	DRAWN BY : 陈一鸣	DATE : 2014-02-23	PART NAME: CF Express Type B PUSH CONN. 板上4.7H
	CHECKED BY: 马跃	DATE : 2014-02-23	PART NO. HVCW31-CF21-470B
UNIT: mm [inch] SCALE: 1:1 SIZE: A4	APPROVED BY: 邱敏	DATE : 2014-02-23	MOLD NO.
			DRAW NO: HVC-2304241641
			SHEET NO. 1 OF 1