

SMD High Current Molded Inductors - FCH1365- Series

FCH1365-Series

●Features:

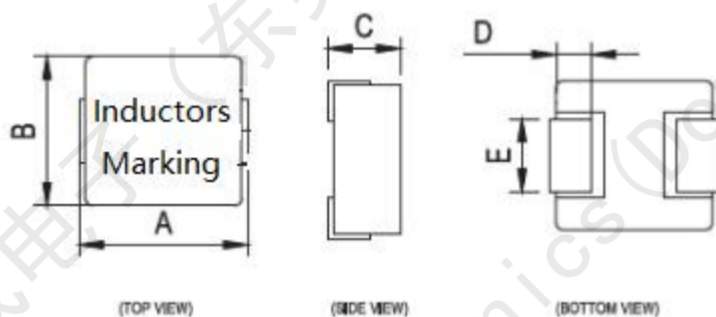
- Ultra low cost
- Shielded constructions
- High current rating up to DC 40Amp
- High frequency range up to 5MHz
- Very low DC resistance
- Low Noise
- RoHS compliant

●Applications:

- PDA/Notebook/Desktop/Server applications
- DC/DC converter

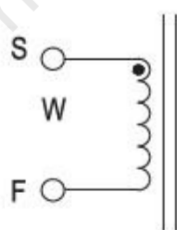


1.Shapes and Dimensions (形状及尺寸)

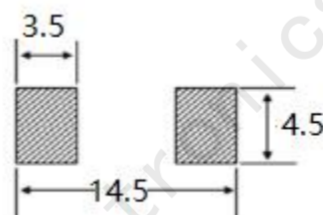


Type	A	B	C	D	E
FCH1365	13.7±0.3	12.8±0.3	6.5 MAX	2.7±0.3	3.8±0.3

2.Schematic:



3.layout recommendation:(mm)



SMD High Current Molded Inductors -FCH1365 - Series

4. FCH1365 -Series:

Part Number (品名)	Inductance (uH) ±20% (电感值)	DCR(mΩ) (直流阻抗)		Isat DC Current (A) (饱和电流)	Irms DC Current (A) (温升电流)
		Typical	MAX	Typical	Typical
FCH1365-R22M	0.22	0.7	1.0	52.0	40.0
FCH1365-R33M	0.33	0.8	1.1	50.0	38.0
FCH1365-R47M	0.47	0.9	1.2	48.0	37.0
FCH1365-R56M	0.56	1.0	1.4	46.0	36.0
FCH1365-R68M	0.68	1.2	1.6	40.0	30.0
FCH1365-R82M	0.82	1.3	1.8	38.0	29.0
FCH1365-1R0M	1.00	1.6	2.0	42.0	29.0
FCH1365-1R5M	1.50	2.4	3.2	32.0	25.0
FCH1365-2R2M	2.20	2.8	3.5	26.0	24.0
FCH1365-3R3M	3.30	4.8	5.3	23.0	19.0
FCH1365-4R7M	4.70	7.5	8.6	23.0	17.0
FCH1365-5R6M	5.60	9.2	11.0	18.0	15.0
FCH1365-6R8M	6.80	10.5	12.1	16.0	13.0
FCH1365-8R2M	8.20	11.0	18.0	15.0	12.0
FCH1365-100M	10.00	16.0	20.0	13.0	11.0
FCH1365-150M	15.00	22.0	30.0	12.0	10.0
FCH1365-220M	22.00	32.0	45.0	10.0	6.5
FCH1365-330M	33.00	45.0	59.0	7.0	6.0
FCH1365-470M	47.00	63.0	75.0	7.0	6.0
FCH1365-560M	56.00	80.0	95.0	6.0	5.0
FCH1365-680M	68.00	85.0	103.0	5.5	4.5
FCH1365-820M	82.00	96.0	140.0	4.5	4.0
FCH1365-101M	100.00	105.0	145.0	4.5	4.0
FCH1365-151M	151.00	180.0	220.0	4.0	3.5

Remark:

<1>Inductance: 100KHz 0.1V

<2>Tolerance of inductance:±20%

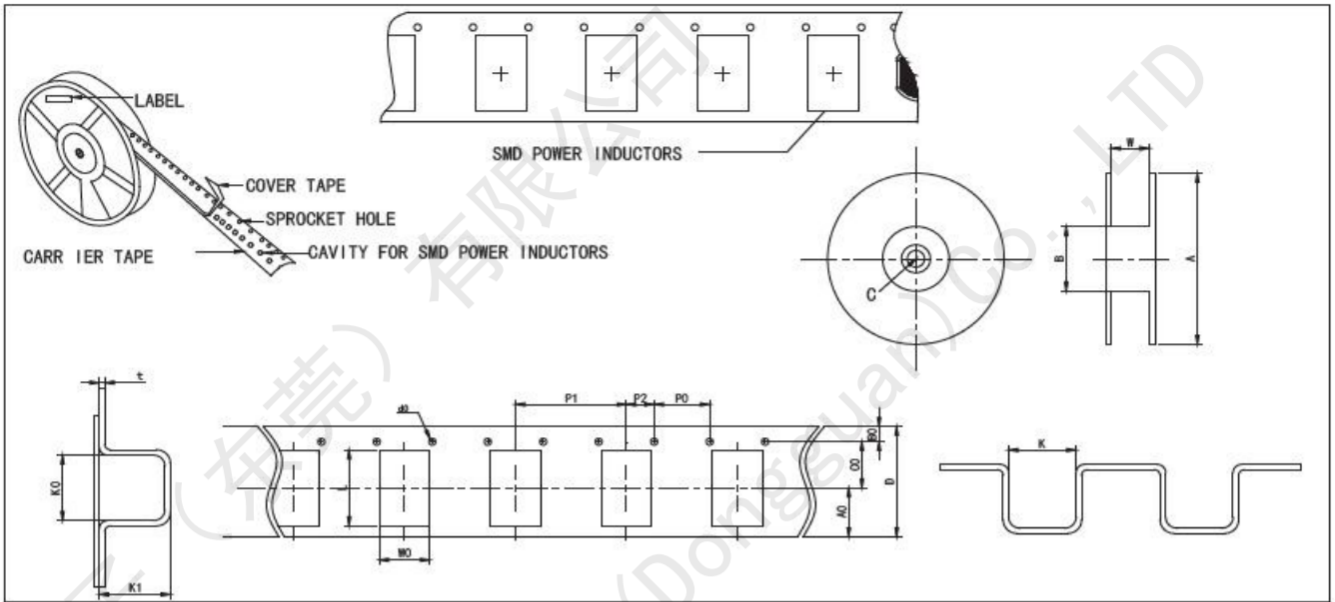
<3>Isat: The value of current indicates that inductance drops 30% (Typical) from its initial value

<4>Irms: The value of current indicates that the temperature of the coil is increase 40°C (Typical)

<5>Test condition: Ta= 25°C

SMD High Current Molded Inductors -FCH1365- Series

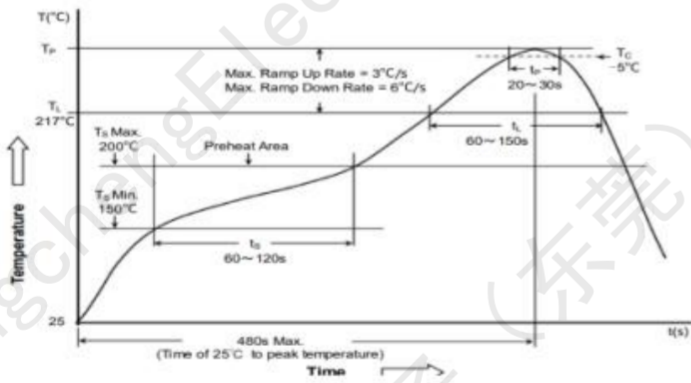
5.FCH1365-Series



●Reel Dimensions & Packing Unit(卷轴尺寸及包装数量)

Part Number 品名	Dimensions of Reel 卷轴尺寸				Packaging Unit 包装数
	A	B	C	W	
FCH1365	330	100.0±2.00	13.5±1.0	24.0±0.50	500pcs/r

6. Reflow Profile for SMT Components



	Package Thickness 封装厚度	Package Volume 封装体积		
		<350 mm ³	350~2000 mm ³	>2000 mm ³
PB-Free Assembly 无铅装配	<1.6mm	260°C	260°C	260°C
	1.6~2.5mm	260°C	250°C	245°C
	≥2.5mm	250°C	245°C	245°C

※ Reflow is referred to standard IPC/JEDEC J-STD-020D.
回流焊参照标准 IPC/JEDEC J-STD-020D.