

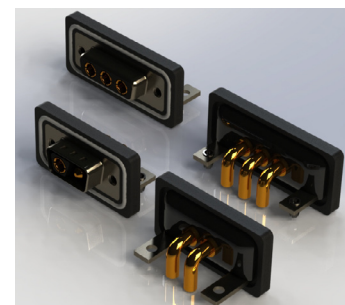
629WC/630WC SERIES



Waterproof D-Sub Connectors: Power Combo, Right Angle

Features:

- Signal, along with power contacts within one connector
- Space saving on the PCB and I/O designs
- Available in various pin out configurations
- Pin and socket contact mating design with P.C. tail termination
- Metal shell provides EMI/RFI shielding, plug shell indents provide grounding and additional mating retention
- Mounting options include threaded hole with #4-40UNC or M3, with or without boardlocks
- D-shaped connector mating outline provides polarization
- IP Rating: IP67



Specifications:

| | Power Only | Combination |
|--------------------------------------|--|----------------------|
| Insulator Material | PBT+30% GF, UL 94V-0, Color: Black | |
| Contact Material | Copper Alloy | |
| Contact Plating | Selective Gold (See Ordering Code) over Nickel | |
| Shell Material and Plating | Steel with Ni or Tin Plating | |
| Sealing compound | Epoxy | |
| O-ring Material | Silicone | |
| Current Rating (Power Contacts) | 10 amps, 20 amps, 30 amps, 40 amps | |
| Current Rating (Signal Contacts) | | 5 amps |
| Voltage Rating | 125 V | |
| Contact Resistance (Power Contacts) | 1 Milliohms maximum | |
| Contact Resistance (Signal Contacts) | | 10 Milliohms maximum |
| Insulation Resistance | 5000 megaohms minimum | |
| Dielectric Withstanding Voltage | 1000 V AC rms at Sea Level | |
| Operating Temperature | -25°C To +85°C | |
| Mating Cycle | 500 For 30 Microinches Gold Plating, 50 For Gold Flash Plating | |
| IP Rating | IP67 | |

Ordering Code:

629W2W2-240-1N2

SERIES: _____
 629: PLUG (PIN)
 630: RECEPTACLE (SOCKET)

CONNECTOR TYPE: _____
 W - WATERPROOF

LAYOUT: _____

| | POWER ONLY | | COMBINATION | | | |
|-----------------------|------------|------|-------------|------|------|------|
| SIZE 9 CONTACT SHELL | 2W2 | 2WK2 | 5W1 | | | |
| SIZE 15 CONTACT SHELL | 3W3 | 3WK3 | 7W2 | 11W1 | | |
| SIZE 25 CONTACT SHELL | 5W5 | | 9W4 | 13W3 | 17W2 | 21W1 |

8W8 TOTAL NO. OF POWER CONTACT
 2WK2 MALE FEMALE COMBINATION
 TOTAL NO. OF CONTACT

MOUNTING OPTIONS:

- 2 - #4-40 UNC THREADED RIVET
- 3 - #4-40 UNC THREADED RIVET WITH BRACKET & BOARDLOCKS
- 4 - #4-40 UNC THREADED RIVET WITH BRACKET
- A - M3 THREADED RIVET
- B - M3 THREADED RIVET WITH BRACKET & BOARDLOCKS
- C - M3 THREADED RIVET WITH BRACKET

SHELL PLATING:
 N - NICKEL
 T - TIN

CURRENT RATING:

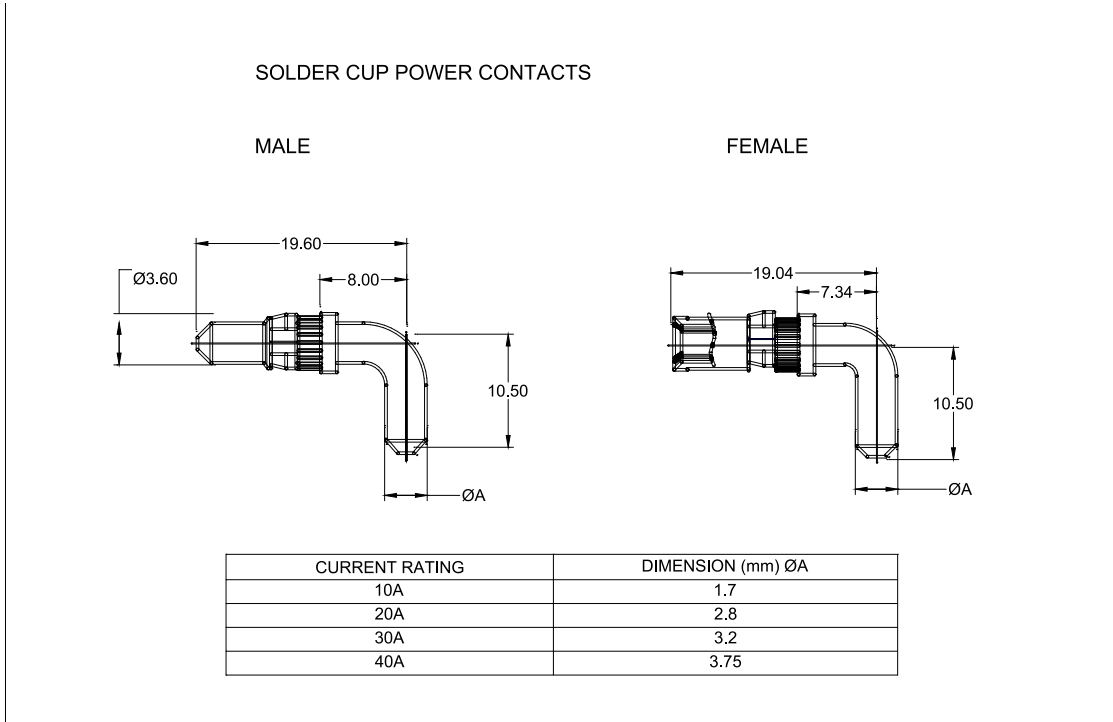
- 1 - 10A
- 2 - 20A
- 3 - 30A
- 4 - 40A

CONTACT PLATING THICKNESS:

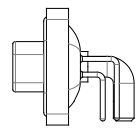
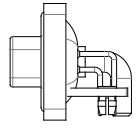
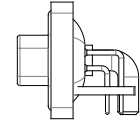
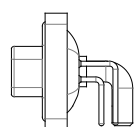
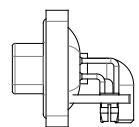
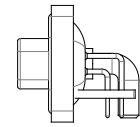
- 2 - GOLD FLASH PLATING
- 1 - 5 MICROINCHES OF GOLD PLATING
- 3 - 15 MICROINCHES OF GOLD PLATING
- 6 - 30 MICROINCHES OF GOLD PLATING

TAIL TYPE:
 40 - PC TAIL

R/A PCB Power Contacts:



Mounting Options:

| | | |
|--|--|---|
| <p>#4-40 UNC THREADED RIVIT</p>  <p>CODE: 2</p> | <p>#4-40 UNC THREADED RIVIT WITH BRACKET & BOARDLOCKS</p>  <p>CODE: 3</p> | <p>#4-40 UNC THREADED RIVIT WITH BRACKET</p>  <p>CODE: 4</p> |
| <p>M3 THREADED RIVIT</p>  <p>CODE: A</p> | <p>M3 THREADED RIVIT WITH BRACKET & BOARDLOCKS</p>  <p>CODE: B</p> | <p>M3 THREADED RIVIT WITH BRACKET</p>  <p>CODE: C</p> |

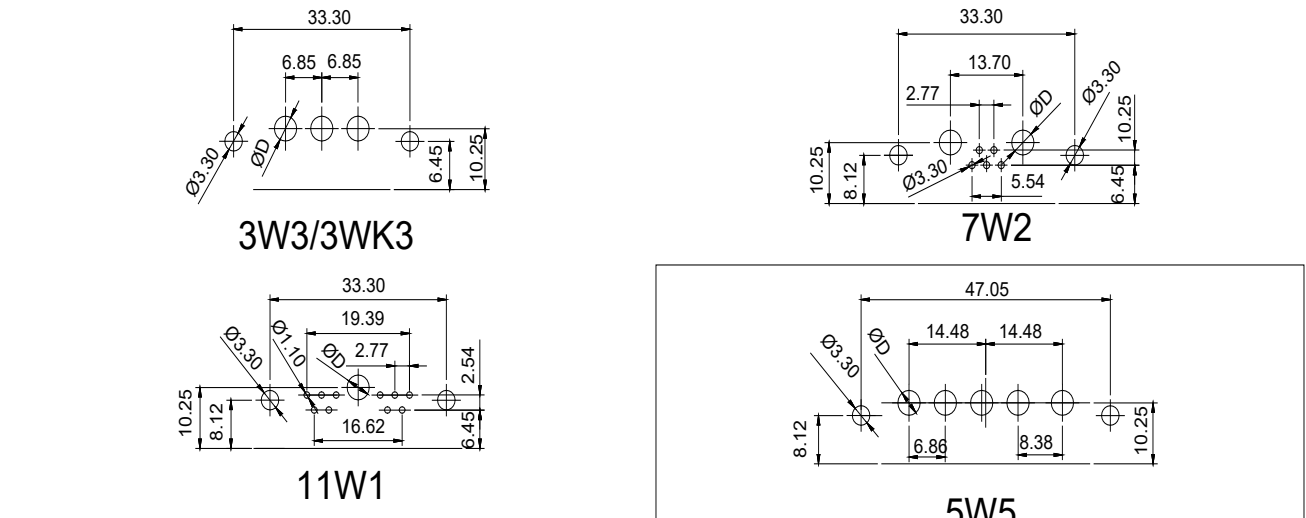
WATERPROOF POWER COMBO D-SUB

RIGHT ANGLE PCB SOLDER LAYOUT

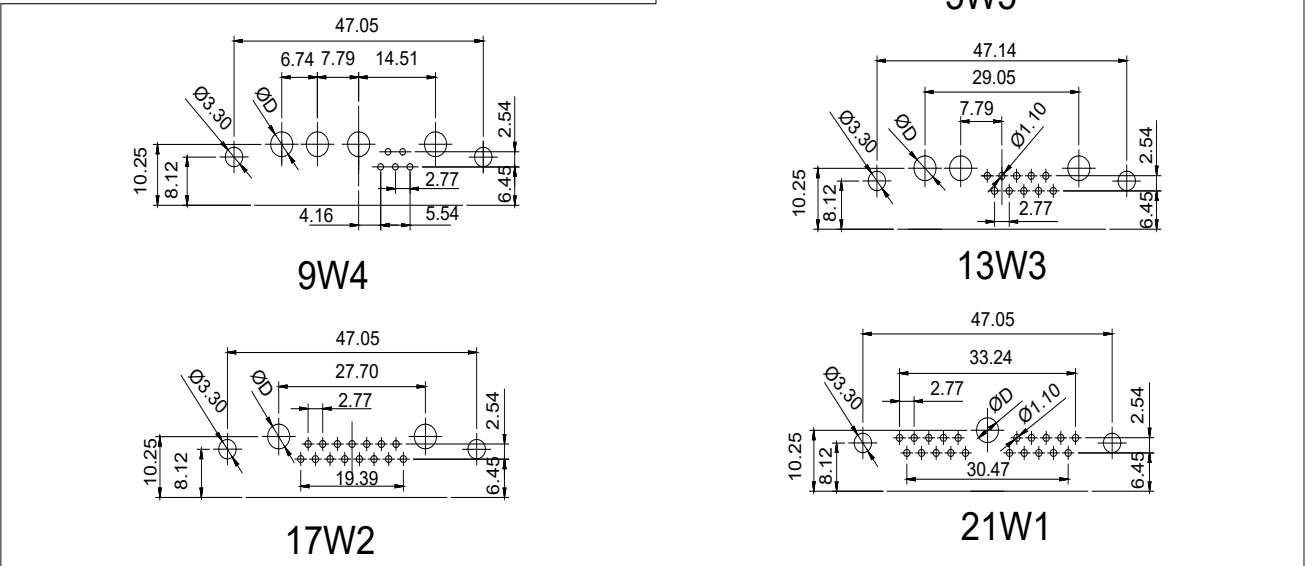
SHELL SIZE 1(E)



SHELL SIZE 2(A)



SHELL SIZE 3(B)



| | | | | |
|----------------|-----|-----|-----|-----|
| Current Rating | 10A | 20A | 30A | 40A |
| D(mm) | 2.2 | 3.3 | 3.7 | 4.2 |