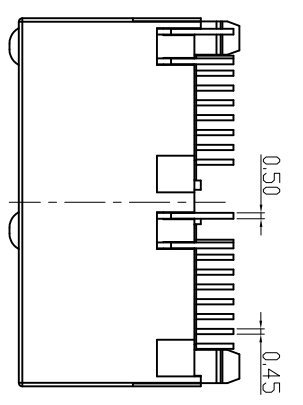


CATEGORY	DESCRIPTION	P/N #	REV.	ECN NO	DESCRIPTION	REVISED	DATE
CONNECTOR	RJ45 180度直插H1.57全塑带左单灯	MJ88V-XX12-HPPDLX1	A01		New Release	XSY	2020.07.17



X	Housing Color
B	Black
Y	Yellow 114C

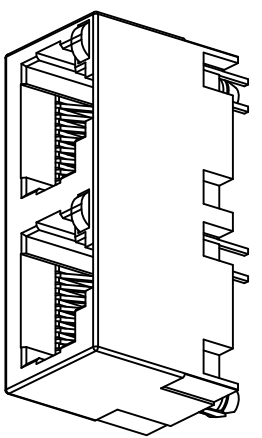
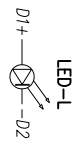
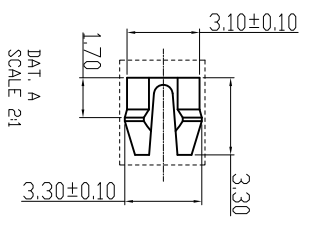
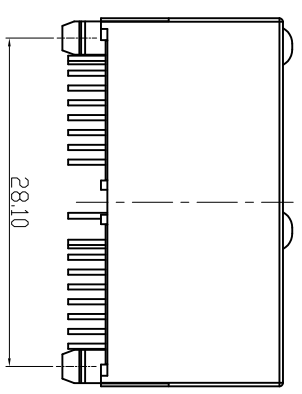
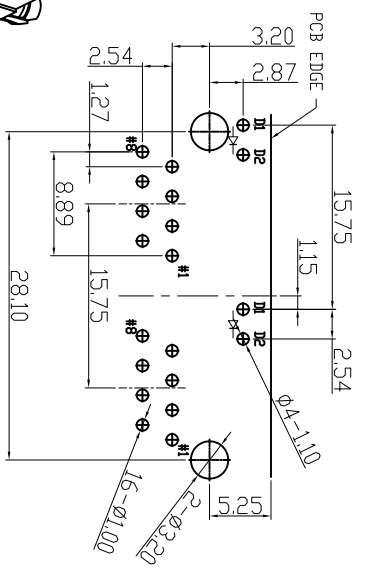
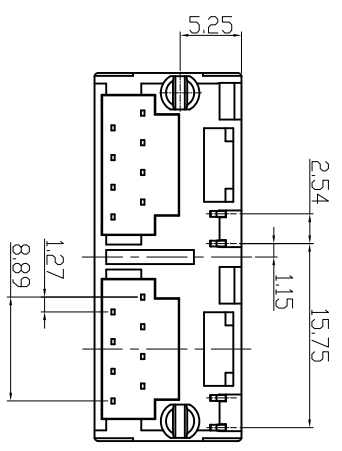
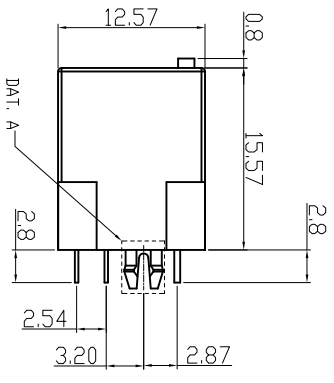
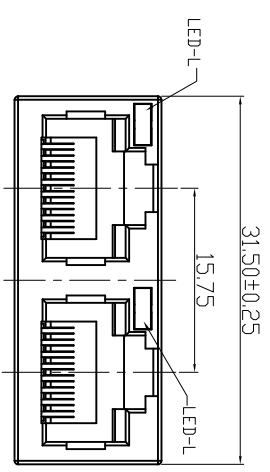
X	Terminal Plating
0	Au 1u" Plating
1	Au 3u" Plating
2	Au 6u" Plating
3	Au 15u" Plating
4	Au 30u" Plating

X	LED-L
G	Green
Y	Yellow

MJ88V-XX12-HPPDLX1

SPECIFICATIONS:

1. RJ Electrical Characteristics
- 1-1: Voltage: 150V AC RMS.
- 1-2: CURRENT RATING: 1.5 A
- 1-3: CONTACT RESISTANCE: 40 mΩ MAX
- 1-4: INSULATION RESISTANCE: 500MΩ MIN.
- 1-5: DIELECTRIC WITHSTAND VOLTAGE: 1000V AC.
- 1-6: OPERATING TEMPERATURE: -40°C~80°C



Recommend PCB Layout
Top View
Tolerance: ±0.05mm
PCB Thickness: 1.60±0.05mm

UNLESS OTHERWISE SPECIFIED TOLERANCES		SCALE: 1/1	UNIT: mm	DWG. NO:
DECIMALS: X : ±0.5 XX : ±0.3 XXX : ±0.2		ANGLES: X : ±2° XX : ±0.3° XXX : ±1°		SIZE: A3
NO.		PART NAME	Q'TY	MATERIAL
d	LED-L	2	SEE TABLE 1	Tin PALTING
c	Terminal	16	Phosphor Bronze T=0.3mm	Au/Tin PALTING
b	Insert	2	PBT UL94V-0	Black
a	HOUSING	1	PBT UL94V-0	See Table
				&COLOR

东莞市合陵电子有限公司
 Dongguan Heling Electronic Co., LTD

APPROVED BY	CHECKED BY	PREPARED BY
DICK	XSY	XSY
CUSTOMER COPY		