

| | | | |
|----|------|------|----|
| 版本 | 变更内容 | 工程确认 | 日期 |
| | | | |

A

A

B

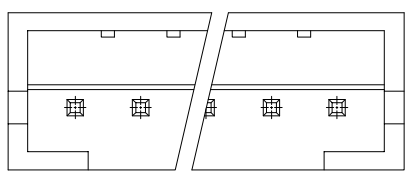
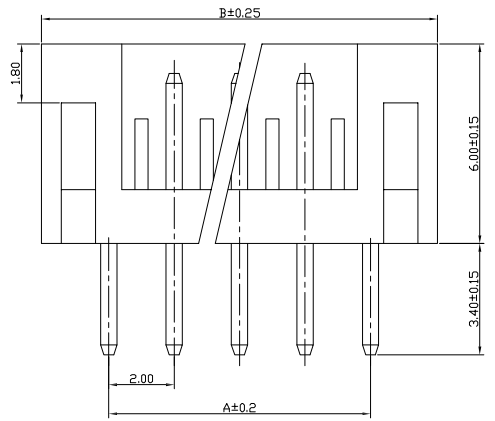
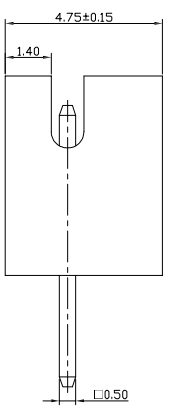
B

C

C

D

D



| | | | |
|----------|-----------------|----------------|------|
| 16 | YTC-HAA200A-16A | 30.0 | 34.0 |
| 15 | YTC-HAA200A-15A | 28.0 | 32.0 |
| 14 | YTC-HAA200A-14A | 26.0 | 30.0 |
| 13 | YTC-HAA200A-13A | 24.0 | 28.0 |
| 12 | YTC-HAA200A-12A | 22.0 | 26.0 |
| 11 | YTC-HAA200A-11A | 20.0 | 24.0 |
| 10 | YTC-HAA200A-10A | 18.0 | 22.0 |
| 9 | YTC-HAA200A-9A | 16.0 | 20.0 |
| 8 | YTC-HAA200A-8A | 14.0 | 18.0 |
| 7 | YTC-HAA200A-7A | 12.0 | 16.0 |
| 6 | YTC-HAA200A-6A | 10.0 | 14.0 |
| 5 | YTC-HAA200A-5A | 8.0 | 12.0 |
| 4 | YTC-HAA200A-4A | 6.0 | 10.0 |
| 3 | YTC-HAA200A-3A | 4.0 | 8.0 |
| 2 | YTC-HAA200A-2A | 2.0 | 6.0 |
| Circuits | 180° | A | B |
| | Part NO. | Dimension (MM) | |

Dimensional&Drdering Information

| | |
|-----------------------|----------------|
| poles | 2-16Poles |
| Pitch between ploes | 2.0MM |
| Rated Voltage | 100V AC.DC |
| Rated current | 2.0A |
| Withstand Voltage | 800V.AC/minuts |
| Insulation Resistance | ≥1000MΩ |
| Temperature Range | -25℃~+85℃ |
| Applicable Wire | AWG#24 ~#32 |

| | | | | |
|---|------------------------|---------------|--------------|---|
| 深圳市怡远科技有限公司 SHENZHEN YIYUAN TECHNOLOGY CO.,LTD | | 页码 (SHEET) | 1/1 | 单位(UNIT): MM |
| | | 版本 (REV) | A1 | 比例(SCALE) |
| 品名 (ITEM NO) | 2.0间距直针 WAFER DIP TYPE | 日期 (DATE) | 2021. 10. 12 | GENERAL TOLERANCE *** ±0.08 ** ±0.15 * ±0.25 |
| 料号 (PART NO) | YTC-HAA200A-**A | 设计 (DESIGN) | LUO | |
| 图号 (DWG NO) | | 审核 (CHECKED) | ROGER LI | These drawings and specifications are Shenzhen Yiyuan Technology Co Ltd.The property should not be copied. Without Shenzhen Yiyuan Technology Co. Ltd.Prior written consent to copy or use in any way. Email at info@yiyuanswitches.com |
| | | 核准 (APPROVED) | ROC ZHAO | |

E

E

F

F