

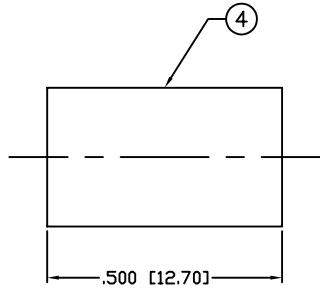
THIS DRAWING CONTAINS INFORMATION PROPRIETARY TO RF INDUSTRIES,  
 ANY UNAUTHORIZED USE OF THIS DRAWING IS EXPRESSLY PROHIBITED  
 WITHOUT WRITTEN PERMISSION FROM RF INDUSTRIES.  
 ANY VIOLATION IS PUNISHABLE UNDER U.S. COPYRIGHT LAWS.

ALL DIMENSIONS ARE REFERENCE ONLY

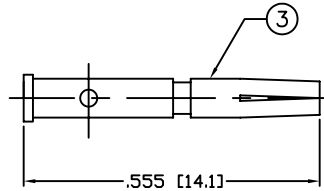
PART NO.

**RFT-1217-X**

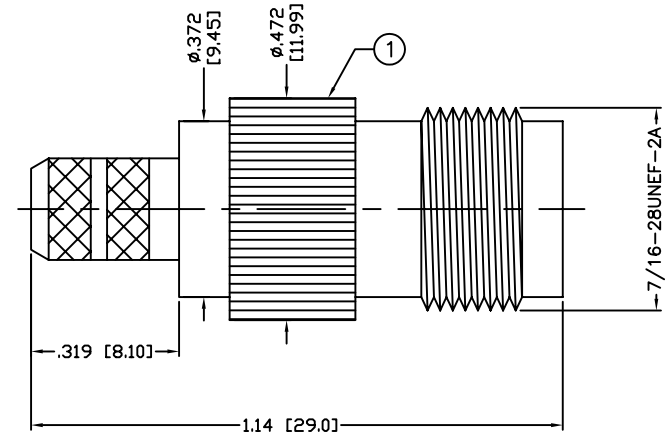
REV	DESCRIPTION	DWN	DATE	APPROVED
A	ENGINEERING RELEASE	PB	3/8/93	J. BENZ
B	CHANGE BODY TO PRESS FIT	KMM	9/20/94	R. RICE
C	CHANGE BODY DESIGN & STRIPING DIMENSIONS	CZS	8/20/00	C. ZUNIGA
D1	UPDATE DRAWING REFERENCE DIMENSION AND CONFIGURATION	JDM	11/23/09	C. ZUNIGA



SUGGESTED CRIMP DIE: .255

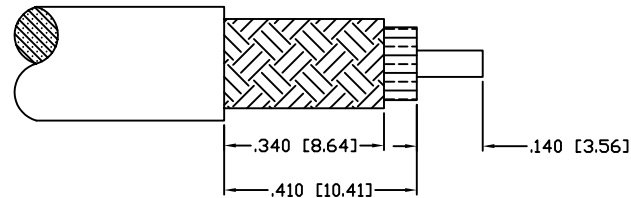


SUGGESTED CRIMP DIE: .068



**SPECIFICATIONS:**

IMPEDANCE: 50 Ohms  
 FREQUENCY RANGE: 0-11 GHz  
 WORKING VOLTAGE: 500 Vrms  
 INSULATION RESISTANCE: 5k M ohms min.  
 TEMPERATURE RANGE: -65°C TO +165°C  
 FOR RG-8/X, BELDEN 9258, MAXRAD M8X-100 &  
 M8X-1000, MICRO 8/U, REMEE 1600, SAXTON 8315 &  
 TIMES LMR-240 & LMR-240 ULTRAFLEX CABLE



**RECOMMENDED STRIPPING INSTRUCTIONS**

1	BODY	1	BRASS	NICKEL, 100μ"	000494	
2	INSULATOR	1	DELTRIN	---		
3	CONTACT	1	BRASS	GOLD, 3 μ"		
4	FERRULE	1	BRASS	NICKEL, 100μ"		
5	PRESS WASHER	1	BRASS	NICKEL, 100μ"		
6						
7						
8						
9						
10					DRAWN	
11					JDMc	
12					11/23/09	
13					CHECKED	
14						
#	DESCRIPTION	QTY	MATERIAL	FINISH	APPROVALS	DATE

UNLESS OTHERWISE SPECIFIED:  
 1. REMOVE ALL BURRS  
 2. BREAK ALL CORNERS & EDGES .005 R. MAX.  
 3. CHAMFER 1ST & LAST THREADS 45°  
 4. SURFACE ROUGHNESS 63 FINISH MIL-STD-10  
 5. DIAMETERS ON COMMON CENTERS TO BE CONCENTRIC WITHIN .002 T.I.R.  
 6. ALL DIMENSIONS ARE AFTER PLATING.

DIMENSIONS ARE IN INCHES AND [MILLIMETERS]  
 UNLESS OTHERWISE NOTED TOLERANCES ARE:

DECIMALS	DIAMETER
.xxx±.003 [.08]	.xxx±.001 [.03]
.xx±.005 [.13]	.xx±.003 [.08]

**RF connectors**  
 DIVISION OF RF INDUSTRIES, LTD.

7610 MIRAMAR RD  
 SAN DIEGO, CA 92126  
 (858) 549-6340  
 (858) 549-6345 FAX

**TNC JACK, CRIMP**

SIZE	CABLE GROUP	DWG NO.	REV
A	X	RFT-1217-X	D1

SCALE: NTS      CAD FILE OUTLINE      SHEET 1 OF 1