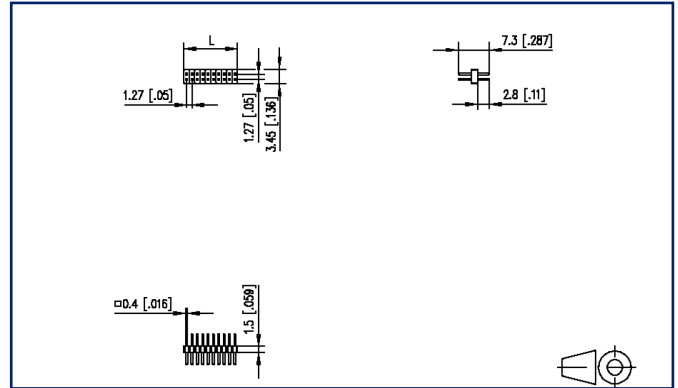


Illustrations



Dimensional drawing



See enlarged drawings at the end of document

Product specification

- pin header, THR solderable
- centerline 1.27 mm, direction of connection vertical 0°
- color black
- Tape & Reel packaging possible
- dual rows

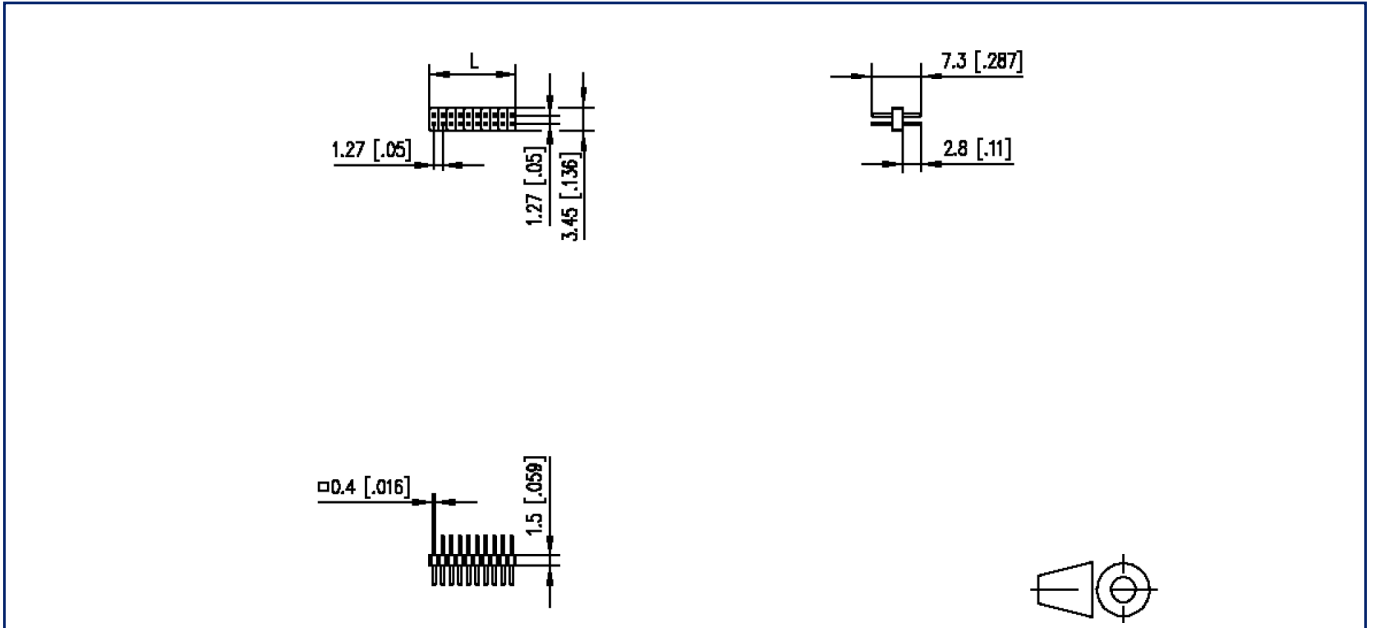
Technical Data

| General Data | |
|-----------------------------|---------------|
| min. number of poles | 2 |
| max. number of poles | 50 |
| Protection category | IP00 |
| Rated current | 1 A |
| Material | |
| insulating material | PE-HT |
| contact material | CuZn |
| contact pin material | CuZnPb |
| contact pin surface | Ni + Au Flash |
| Glow-Wire Flammability GWFI | - |
| Glow-Wire Flammability GWIT | - |
| Climatic Data | |
| upper limit temperature | 105 °C |
| lower limit temperature | -40 °C |
| general | |
| Tolerance | ISO 2768 -mH |
| Solderability | reflowable |

© 2023 METZ CONNECT - Technische Änderungen vorbehalten! Subject to modifications! Sous réserve de modifications techniques!

Illustrations

Dimensional drawing



$L = (\text{pole size} - 1) \times \text{centerline} + 1.27 \text{ mm } [0.05]$