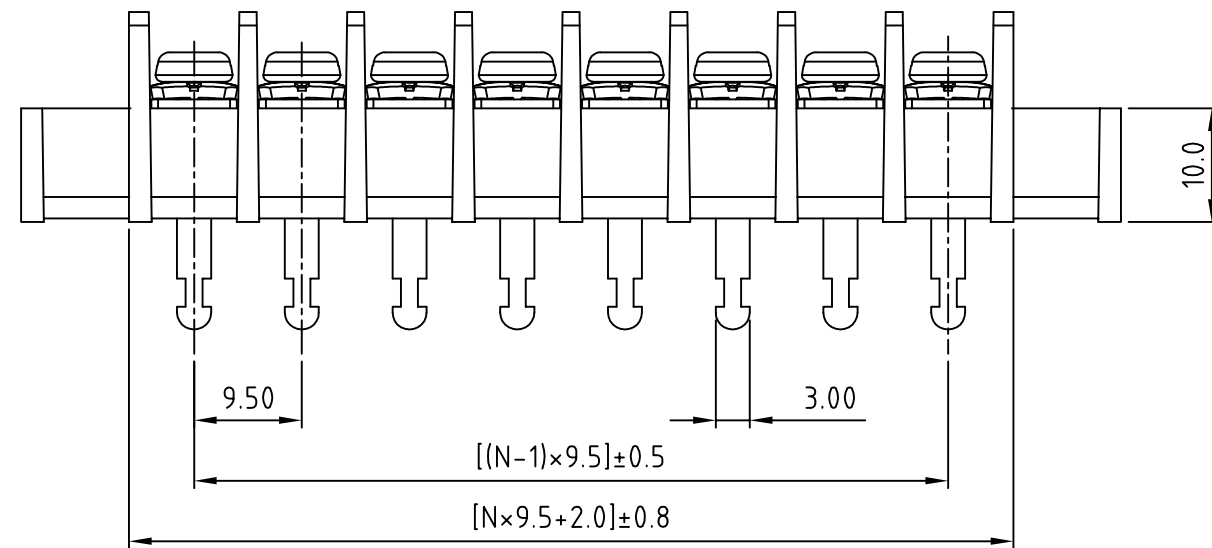
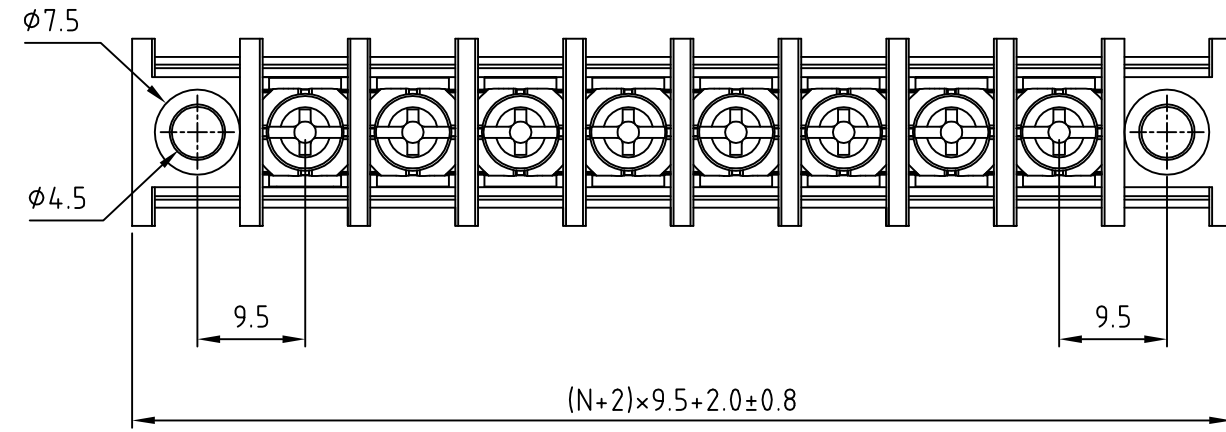


SIGN	DATE	DESCRIPTION	APPROVER
------	------	-------------	----------

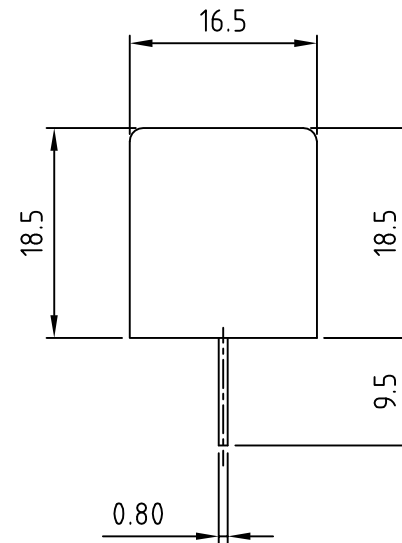
THIS IS CAD DRAWING, DO NOT REVISE MANUALLY!!!

SPECIFICATIONS

VOLTAGE & CURRENT:	300 V, 25 A
WITHSTANDING VOLTAGE:	AC 2000 V/Min
INSULATION RESISTANCE:	1000 MΩ OR MORE AT DC 500 V
TEMPERATURE RANGE:	-40 °C ~ +105 °C
SCREW TORQUE VALUE:	8.8 Lb-In.
WIRE RANGE:	22 - 12 AWG
1) MOLDED PARTS:	POLYIMIDE 66, UL 94 V-0 BLACK
2) TERMINAL:	BRASS, 0.8t, Tin PLATED
3) TERMINAL SCREWS:	STEEL, Ni PLATED, M3.5
APPROVAL:	(Signature) PENDING



N=Number of poles



PART NUMBER:

**OSTYK516XX330**

No. of Poles \_\_\_\_\_

- 02: 2 Poles
- 03: 3 Poles
- 04: 4 Poles
- ⋮
- 30: 30 Poles



THESE DRAWINGS AND SPECIFICATIONS ARE THE PROPERTY OF ON-SHORE TECHNOLOGY, INC. AND SHALL NOT BE REPRODUCED, COPIED OR USED IN ANY MANNER WITHOUT THE PRIOR WRITTEN CONSENT OF ON-SHORE TECHNOLOGY, INC.

TITLE	OSTYK-516 W/Flange Series			
PART NO.	OSTYK516XX330	DWG NO.	OSTYK516XX330.DWG	
APPROVED	CHECKED	DESIGNED	DRAWN	CUST NO.
Shi Jun 2006.11.07	Seamus 2006.11.06	Tony 2006.04.05	Tony 2006.04.05	
				Tolerance
				X. ±0.50
UNIT: mm				X.X ±0.30
SCALE: NONE				X.XX ±0.10
SHEET: 01/01				X° ±1°
REV.: A				