

# RP680

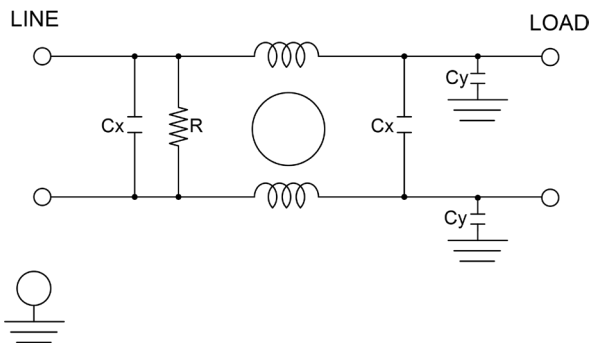
## COMPACT HIGH CURRENT **DC** EMI POWER LINE FILTER, 600V

### FEATURES

- » Rated currents include **250A, 320A, 400A, 600A, 800A and 1000A**
- » Single Stage Line Filter
- » Available with **B** (Bus Bars)
- » Compact and High Current Design
- » Agency Approved to UL1283 / 60929, CSA C22.2, EN 60939
- » Y-cap value can be adjusted to fit specification



### ELECTRICAL SCHEMATIC



### SPECIFICATIONS

<b>MAX. OPERATING VOLTAGE</b>	250V +10%
<b>AMBIENT TEMPERATURE</b>	-25 TO 55°C
<b>CLIMATIC CATEGORY</b>	25/100/21
<b>TERMINALS (-T)</b>	BUS BARS 250A (3X20), 320-400A(6X25), 600A(8X25), 800-1000A(8X40)
<b>TYP. WEIGHT, LBS (KG)</b>	20.0-25.0 (9.07-11.3)

### HIPOT RATINGS

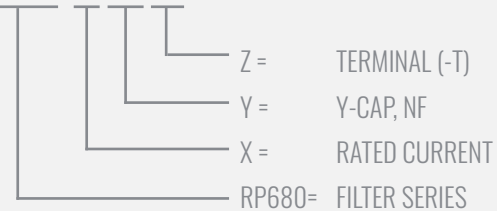
<b>LINE TO GROUND</b>	3500 VDC
-----------------------	----------

### TYPICAL APPLICATIONS

- ✓ High power rectifiers
- ✓ Uninterrupted power supplies
- ✓ Inverters
- ✓ VDF & PWM
- ✓ DC fast chargers
- ✓ Induction charging
- ✓ Industrial chargers
- ✓ Solar

### HOW TO ORDER

RP680-X-Y-Z



**NOTE:** USE ANY COMBINATION OF -X (AMPS) WITH ANY -Y RATINGS  
E.G. **RP680-250-100-B** (250AMPS WITH 100 NF YCAP)

For **X, Y,** and **Z** options see product specification table.

# RP680

## COMPACT HIGH CURENT **DC** EMI POWER LINE FILTER, 600V

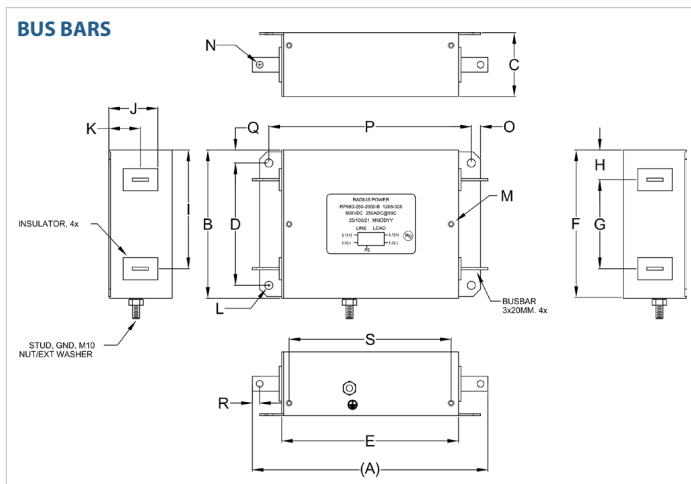
MODEL NO.	RATED CURRENT, A @ 40° C	Y-CAP, nF	TERMINAL OPTIONS				MAX. DIMENSIONS" (MM)		
			(B) INPUT/ OUTPUT 3X20	(B) INPUT/ OUTPUT 6X25	(B) INPUT/ OUTPUT 8X25	(B) INPUT/ OUTPUT 8X40	WIDTH	(LENGTH)	HEIGHT
RP680-250-100-B	250	100	✓				7.87"(200)	12.60"(320)	3.39"(86)
RP680-250-1000-B	250	1000	✓				7.87"(200)	12.60"(320)	3.39"(86)
RP680-250-2000-B	250	2000	✓				7.87"(200)	12.60"(320)	3.39"(86)
RP680-320-100-B	320	100		✓			7.87"(200)	12.60"(320)	3.39"(86)
RP680-320-1000-B	320	1000		✓			7.87"(200)	12.60"(320)	3.39"(86)
RP680-320-2000-B	320	2000		✓			7.87"(200)	12.60"(320)	3.39"(86)
RP680-400-100-B	400	100		✓			7.87"(200)	12.60"(320)	3.39"(86)
RP680-400-1000-B	400	1000		✓			7.87"(200)	12.60"(320)	3.39"(86)
RP680-400-2000-B	400	2000		✓			7.87"(200)	12.60"(320)	3.39"(86)
RP680-600-100-B	600	100			✓		7.87"(200)	12.60"(320)	3.39"(86)
RP680-600-1000-B	600	1000			✓		7.87"(200)	12.60"(320)	3.39"(86)
RP680-600-2000-B	600	2000			✓		7.87"(200)	12.60"(320)	3.39"(86)
RP680-800-100-B	800	100				✓	7.87"(200)	12.60"(320)	3.39"(86)
RP680-800-1000-B	800	1000				✓	7.87"(200)	12.60"(320)	3.39"(86)
RP680-800-2000-B	800	2000				✓	7.87"(200)	12.60"(320)	3.39"(86)
RP680-1000-100-B	1000	100				✓	7.87"(200)	12.60"(320)	3.39"(86)
RP680-1000-1000-B	1000	1000				✓	7.87"(200)	12.60"(320)	3.39"(86)
RP680-1000-2000-B	1000	2000				✓	7.87"(200)	12.60"(320)	3.39"(86)

\*Contact factory for dimensions.

# RP680

## COMPACT HIGH CURRENT **DC** EMI POWER LINE FILTER, 600V

### RP680 MECHANICAL OUTLINES (MM)



SERIES	(A)	B	C	D	E	F	G	H	I	J	K	L	M	N	O	P	Q	R	S
<b>BUS BARS</b>	12.60" (320)	7.87" (200)	3.39" (86)	6.50" (165)	9.45" (240)	7.82" (199)	4.72" (120)	1.57" (40)	6.30" (160)	2.62" (67)	1.69" (43)	Ø0.43", 4x (Ø11.00, 4x)	Ø0.35" Ø9.00	INSERT, M4, 6x	0.49" (13)	10.83" (275)	0.69" (18)	0.39" (10)	8.66" (220)

TYPICAL TOLERANCE: +/-0.02" (0.50MM)

### TYPICAL INSERTION LOSS, dB (50/50 Ohm)

Amps	Freq (MHz)	0.15					0.5					1.0					10					30				
<b>250</b>	CM (dB)	66					66					66					40					24				
	DM (dB)	40					60					45					30					28				
<b>320</b>	CM (dB)	66					66					66					40					24				
	DM (dB)	40					60					45					30					28				
<b>400</b>	CM (dB)	66					66					66					40					24				
	DM (dB)	40					60					45					30					28				
<b>600</b>	CM (dB)	66					66					66					40					24				
	DM (dB)	40					60					45					30					28				
<b>800</b>	CM (dB)	66					66					66					40					24				
	DM (dB)	40					60					45					30					28				
<b>1000</b>	CM (dB)	66					66					66					40					24				
	DM (dB)	40					60					45					30					28				