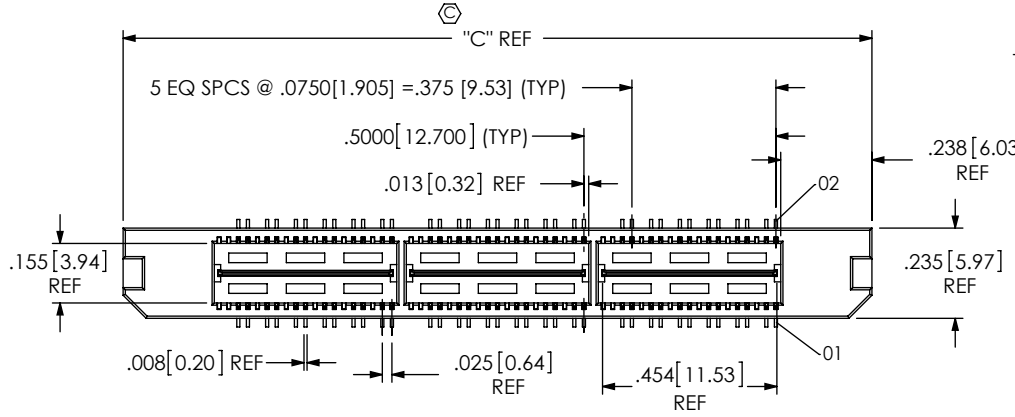


DO NOT SCALE FROM THIS PRINT

MIT-XXX-XX-X-D-DP-XX



No OF POSITIONS  
-012, -024, -036, -048,  
-060, -072, -084  
(PER ROW)

LEAD STYLE  
-01: .1680 [4.267]  
-02: .2861 [7.267]  
-03: .4042 [10.267]  
-04: .6000 [15.240]  
-05: .7080 [17.983]  
-06: .8350 [21.209]

OPTION  
-K: POLYAMIDE FILM PAD  
(USE K-500-300. SEE FIG. 2, SHEET 2)  
-TR: TAPE & REEL (076 POS MAX)  
(N/A ON STYLE -05, -06, -07, -08)

BODY STYLE  
-DP: DIFFERENTIAL PAIRS  
(SEE TABLE 3)

ROW SPECIFICATION  
-D: DOUBLE (USE MIT-19-XX-D-XX  
& MITH-19-XX-D-XX)

No OF BANKS

PLATING SPECIFICATION

-F: 3µ" FLASH SELECTIVE GOLD IN CONTACT AREA, MATTE TIN ON TAIL  
(USE T-1SXX-XX-F & T-1G5-XX-F) (SEE NOTE 10)  
-L: 10µ" LIGHT SELECTIVE GOLD IN CONTACT AREA, MATTE TIN ON TAIL  
(USE T-1SXX-XX-L & T-1G5-XX-L)  
-H: 30µ" HEAVY SELECTIVE GOLD IN CONTACT AREA, 3µ" GOLD ON TAIL  
(USE T-1SXX-XX-H & T-1G5-XX-G)  
-C: 50µ" ELECTRO-POLISHED SELECTIVE GOLD IN CONTACT AREA,  
MATTE TIN ON TAIL (USE T-1SXX-XX-C & T-1G5-XX-L)

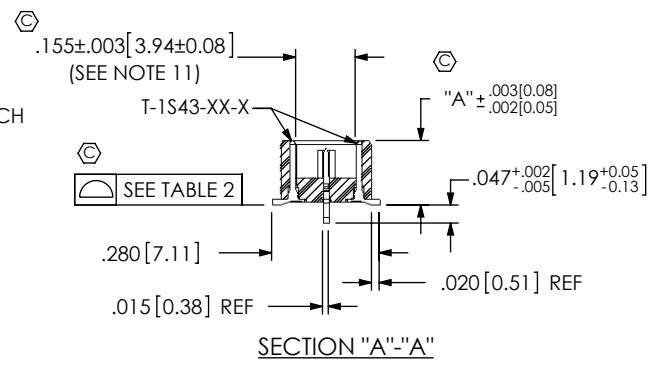
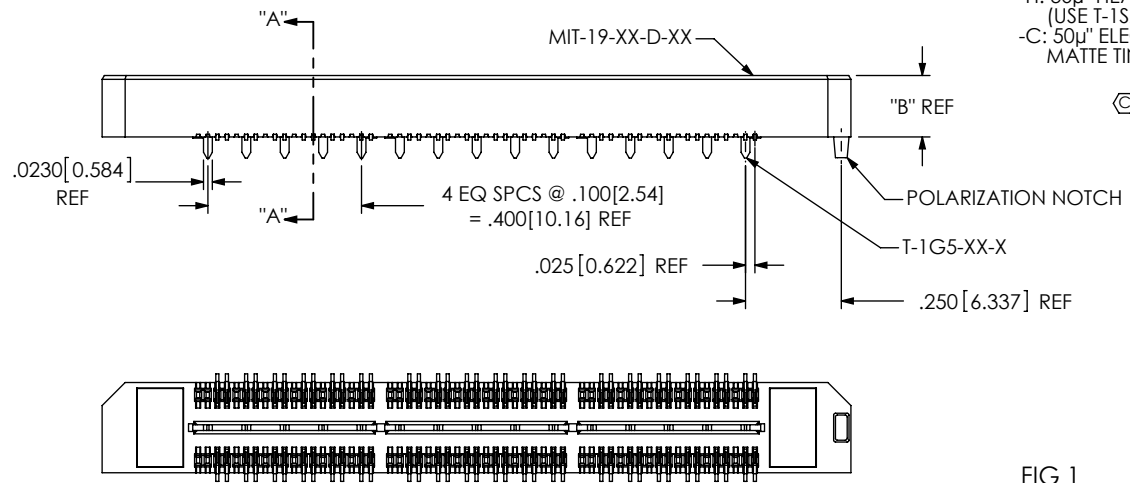
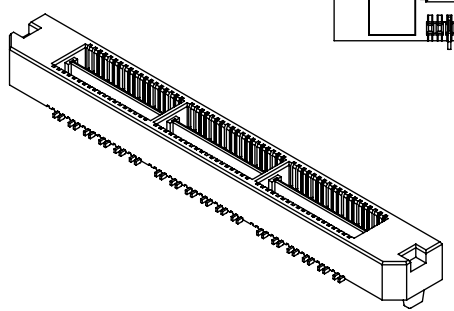


FIG 1  
-01 LEAD STYLE  
(MIT-036-01-X-D-DP SHOWN)  
(STYLE -01 & -02 ONLY)

TABLE 2	
No OF POS	COPLANARITY
-012, -024, -036 -048	.004 [0.10]
-060, -072, -084	.006 [0.15]

TABLE 3	
No. OF POS	"C"
-012	.950 [24.13]
-024	1.450 [36.83]
-036	1.950 [49.53]
-048	2.450 [62.23]
-060	2.950 [74.93]
-072	3.450 [87.63]
-084	3.950 [100.33]

TABLE 1									MATED HEIGHT WITH MS-01
STYLE	"A"	"B"	"D"	BODY	TERMINAL	GROUND PLANE	BOTTOM SPACER		
-01	.1680 [4.267]	.1600 [4.064]	N/A	MIT-19-01-D-XX	T-1S43-01-X	T-1G5-01-X	N/A	.198 [5.03] REF	
-02	.2861 [7.267]	.2781 [7.064]	N/A	MIT-19-02-D-XX	T-1S43-02-X	T-1G5-02-X	N/A	.316 [8.03] REF	
-03	.4042 [10.267]	.3962 [10.063]	0.1180 [2.997]	MIT-19-02-D-XX	T-1S50-03-X	T-1G5-03-X	MITH-19-01-D-XX	.434 [11.02] REF	
-04	.6000 [15.240]	.5920 [15.037]	0.1180 [2.997]	MIT-19-02-D-XX	T-1S50-04-X	T-1G5-04-X	MITH-19-01-D-XX	.630 [16.00] REF	
-05	.7080 [17.983]	.7000 [17.780]	0.2780 [7.061]	MIT-19-02-D-XX	T-1S50-05-X	T-1G5-05-X	MITH-19-02-D-XX	.738 [18.75] REF	
-06	.8350 [21.209]	.8270 [21.006]	0.2780 [7.061]	MIT-19-02-D-XX	T-1S50-06-X	T-1G5-06-X	MITH-19-02-D-XX	.866 [22.00] REF	



NOTES:

1. Ⓢ REPRESENTS A CRITICAL DIMENSION.
2. DELETED COPLANARITY NOTE.
3. MAXIMUM BURR ALLOWANCE: .0015 [0.038] .
4. MINIMUM TERMINAL RETENTION: 6 OZ.
5. MINIMUM GROUND PLANE RETENTION: 1 LB.
6. MAXIMUM ALLOWABLE BOW: .002 [0.05] INCH/INCH AFTER ASSEMBLY.
7. PARTS TO BE MOLDED TO POSITION.
8. NOTE DELETED.
9. NOTE DELETED.
10. -L PLATING CAN BE SUBSTITUTED FOR -F PLATING,  
-L PLATED GROUND PLANE CAN BE SUBSTITUTED FOR -F PLATED GROUND PLANE.
11. PIN CAN EXTEND PAST WALL .003 [0.08] MAX.

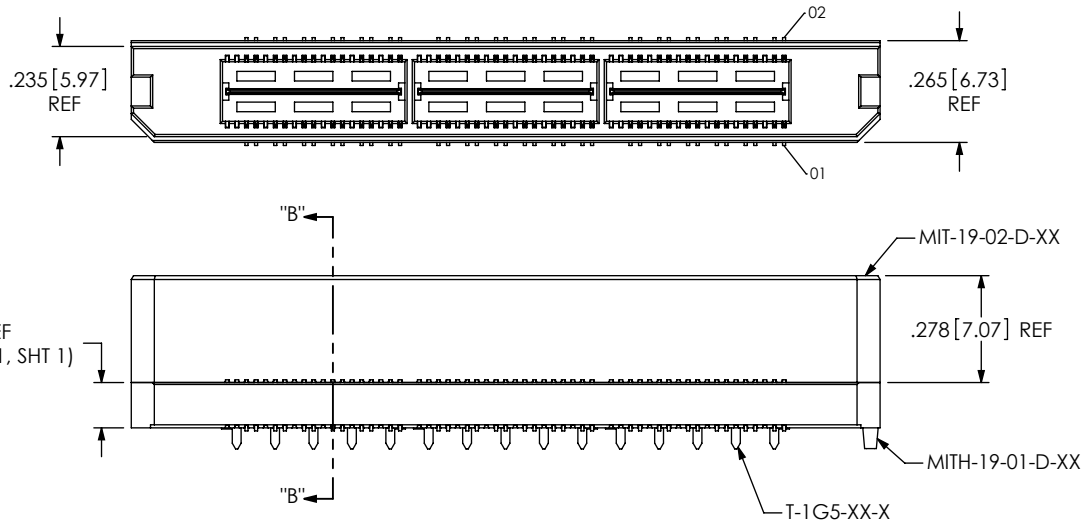
UNLESS OTHERWISE SPECIFIED, DIMENSIONS ARE IN INCHES.  
TOLERANCES ARE:  
DECIMALS ANGLES  
.XX: ±.01 [3] ± 2°  
.XXX: ±.005 [13]  
.XXXX: ±.0020 [0.51]

**PROPRIETARY NOTE**  
THIS DOCUMENT CONTAINS INFORMATION CONFIDENTIAL AND PROPRIETARY TO SAMTEC, INC. AND SHALL NOT BE REPRODUCED OR TRANSFERRED TO OTHER DOCUMENTS OR DISCLOSED TO OTHERS OR USED FOR ANY PURPOSE OTHER THAN THAT WHICH IT WAS OBTAINED WITHOUT THE EXPRESSED WRITTEN CONSENT OF SAMTEC, INC.

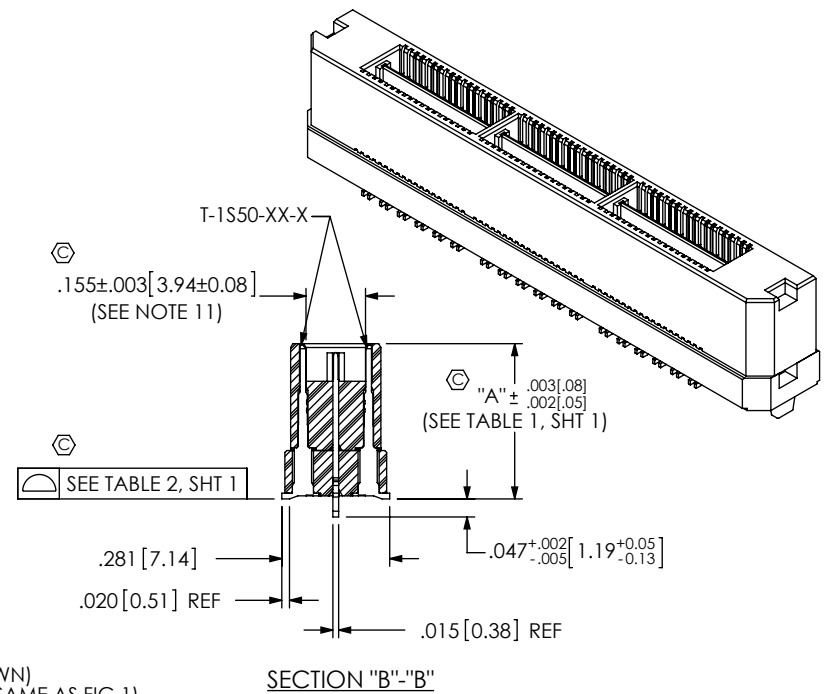
520 PARK EAST BLVD. NEW ALBANY, IN 47150  
PHONE: 812-944-6733 FAX: 812-948-5047  
e-Mail: info@SAMTEC.com code: 55322

<p><b>MATERIAL:</b> DO NOT SCALE DRAWING INSULATOR: LCP, UL94V-0; COLOR: BLACK TERMINAL: PHOS BRONZE GROUND PLANE: PHOS BRONZE</p>	<p>SHEET SCALE: 2:1</p>	<p>DESCRIPTION: .635mm DIFFERENTIAL PAIRS HS TERMINAL ASSEMBLY</p>
<p>DWG. NO. <b>MIT-XXX-XX-X-D-DP-XX</b></p>		<p>BY: DEAN P 3/02/2001 SHEET 1 OF 2</p>

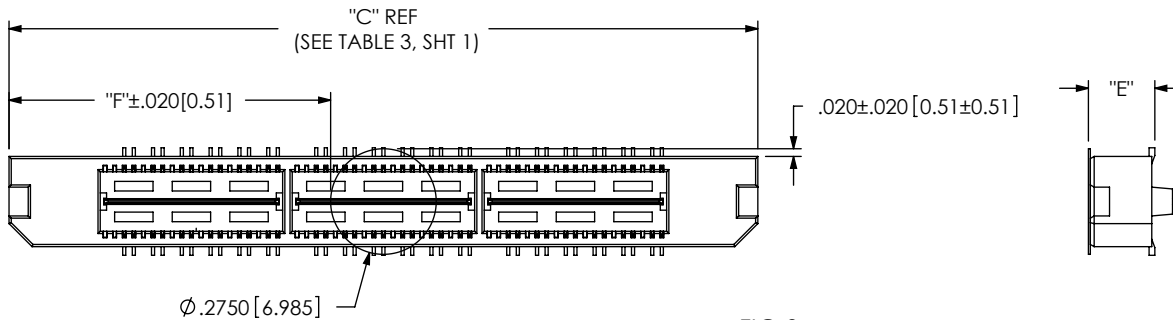
F:\DWG\MISC\MKTG\MIT-XXX-XX-X-D-DP-XX-MKT.SLDDRW



**FIG 2**  
-03 LEAD STYLE  
(MIT-036-03-X-D-DP SHOWN)  
(DIFFERENT AS SHOWN, OTHERWISE SAME AS FIG 1)  
(STYLE -03, -04, -05, & -06)

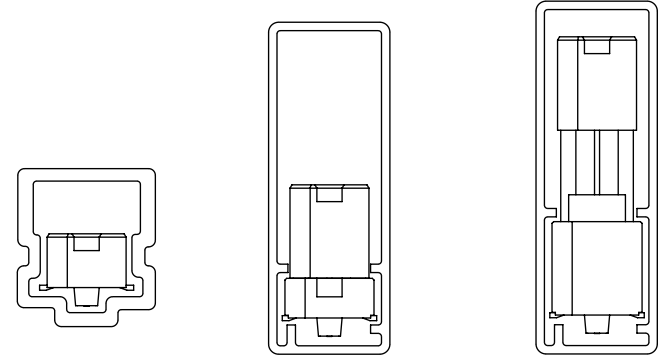


**SECTION "B"-"B"**



**FIG 3**  
-K: POLYAMIDE FILM PAD OPTION  
(USE K-500-300)

**PACKAGING VIEW**  
[PARTS TO HAVE POSITION #1 LOADED  
IN SAME DIRECTION AS ARROW ON TUBE]



TUBE: PT-1-24-01-86  
PLUG: TP-07 (2)

TUBE: PT-1-24-01-98  
PLUG: TP-26 (2)

TUBE: PT-1-24-01-102  
PLUG: TP-26 (2)

[LEAD STYLES -01, -02]

[LEAD STYLES -03 & -04]

[LEAD STYLES -05 & -06]

TABLE 4	
STYLE	"E"
-01	.173[4.39]
-02	.291[7.39]
-03	.409[10.39]
-04	.605[15.37]
-05	.713[18.11]
-06	.841[21.36]

TABLE 5	
No. OF POS	"F"
-012	.338 [8.57]
-024	.588 [14.92]
-036	.838 [21.27]
-048	1.088 [27.62]
-060	1.338 [33.97]
-072	1.588 [40.32]
-084	1.838 [46.67]

**PROPRIETARY NOTE**  
THIS DOCUMENT CONTAINS INFORMATION  
CONFIDENTIAL AND PROPRIETARY TO  
SAMTEC, INC. AND SHALL NOT BE REPRODUCED  
OR TRANSFERRED TO OTHER DOCUMENTS OR  
DISCLOSED TO OTHERS OR USED FOR ANY  
PURPOSE OTHER THAN THAT WHICH IT WAS  
OBTAINED WITHOUT THE EXPRESSED WRITTEN  
CONSENT OF SAMTEC, INC.



520 PARK EAST BLVD, NEW ALBANY, IN 47150  
PHONE: 812-944-6733 FAX: 812-948-5047  
e-Mail: info@SAMTEC.com code: 55322

DO NOT SCALE DRAWING

SHEET SCALE: 2:1

DESCRIPTION:  
.635mm DIFFERENTIAL PAIRS HS TERMINAL ASSEMBLY

DWG. NO. MIT-XXX-XX-X-D-DP-XX

BY: DEAN P 3/02/2001 SHEET 2 OF 2