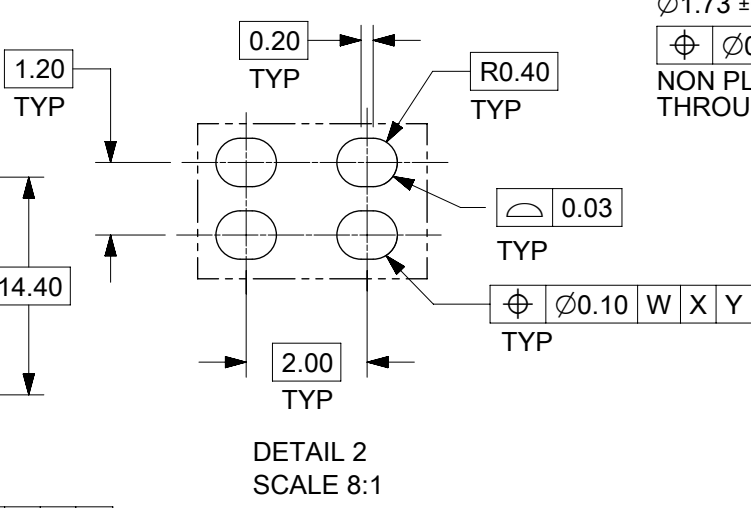
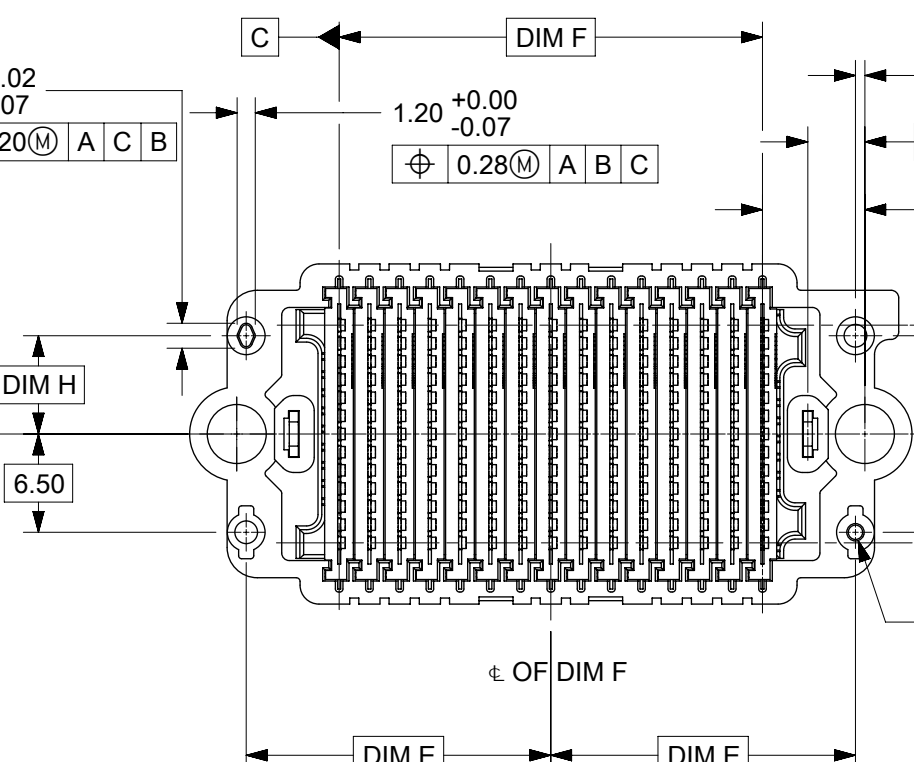
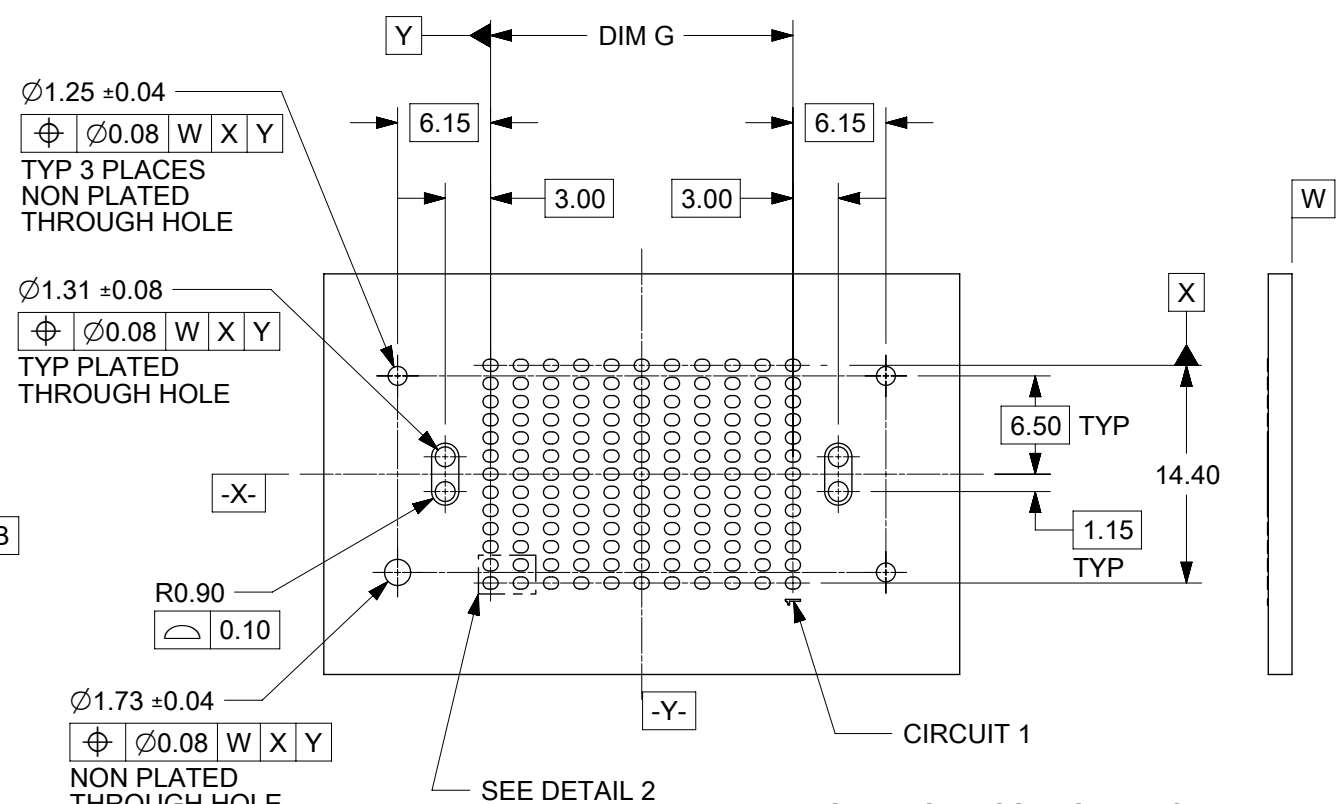
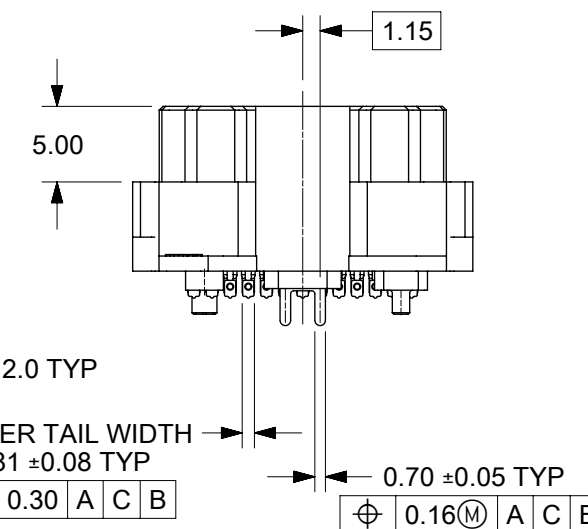
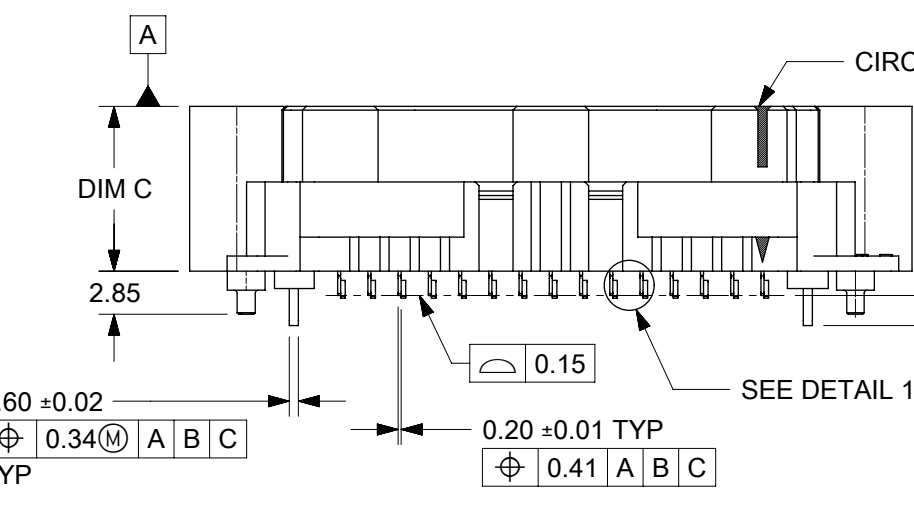
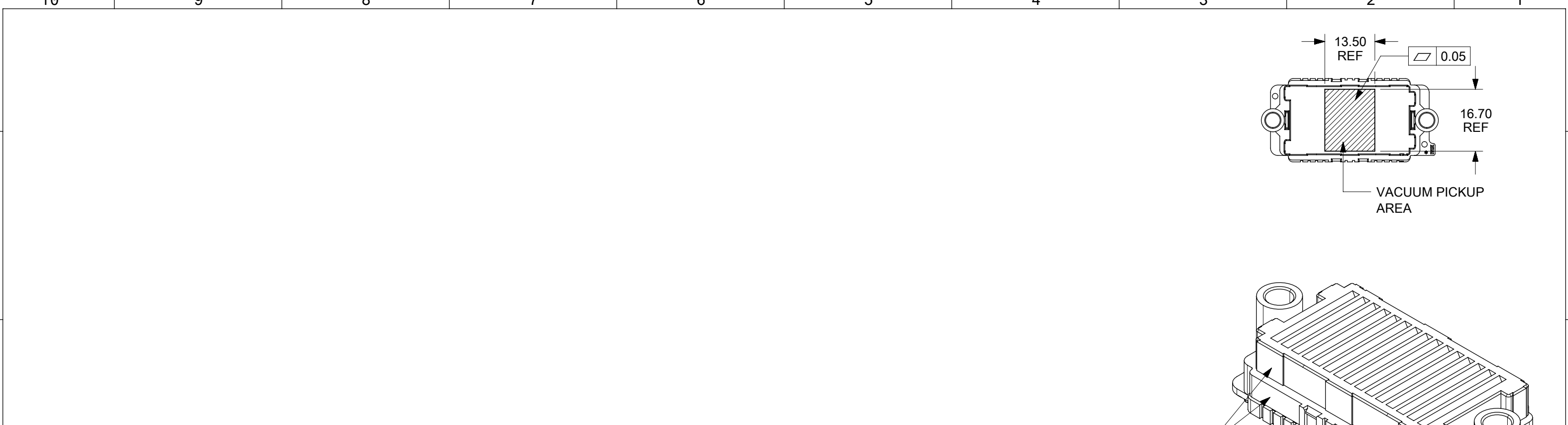


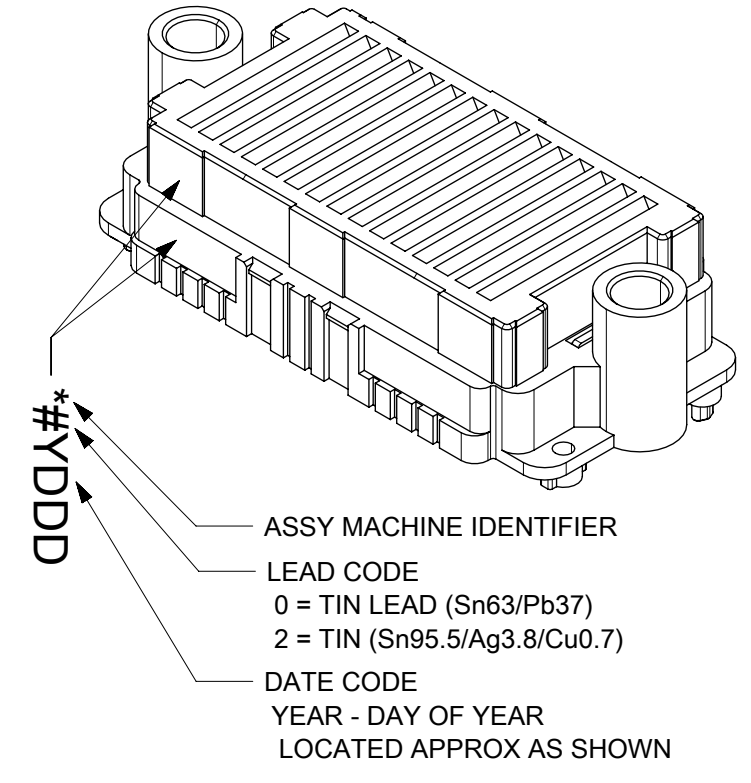
- NOTES:
- HOUSING MATERIAL: LCP, GLASS FILLED, UL 94V-0, BLACK  
CONTACT MATERIAL: HIGH PERFORMANCE ALLOY  
SOLDER NAIL MATL: STAINLESS STEEL  
SOLDER CHARGE MATL: SEE TABLE
  - FINISH: SELECT GOLD 30 MICRO-INCHES MINIMUM IN CONTACT AREA  
SELECT TIN: 100 MICRO-INCHES MINIMUM IN PCB TAIL  
BOTH OVER NICKEL
  - PRODUCT SPEC: PS-45802-001
  - COSMETIC SPEC; PS-45499-002 CLASS B
  - PACKAGING SPEC: PK-45802-001 MOLEX STANDARD TRAYS  
PK-45802-0002 JEDEC STYLE TRAYS
  - DIM B (TYP) TO BE MEASURED AT TWO END COLUMNS ONLY.
  - THERE ARE 13 CKTS PER ROW



THIS DRAWING CONTAINS INFORMATION THAT IS PROPRIETARY TO MOLEX ELECTRONIC TECHNOLOGIES, LLC AND SHOULD NOT BE USED WITHOUT WRITTEN PERMISSION											
DIMENSION UNITS		SCALE		CURRENT REV DESC: INCLUDE DIMENSION H							
mm		NTS									
GENERAL TOLERANCES (UNLESS SPECIFIED)											
ANGULAR TOL ± 0.5°											
4 PLACES ±											
3 PLACES ± 0.05											
2 PLACES ± 0.15											
1 PLACE ± 0.3											
0 PLACES ±											
DRAFT WHERE APPLICABLE MUST REMAIN WITHIN DIMENSIONS				THIRD ANGLE PROJECTION		DRAWING		SERIES		MATERIAL NUMBER	
				B-SIZE		45802		SEE TABLE		GENERAL MARKET	
DOCUMENT STATUS P1				RELEASE DATE 2021/05/20 00:10:54				EC NO: 663342		2021/05/04	
								DRWN: HLG0H		2021/05/05	
								CHK'D: YLLIM		2021/05/20	
								APPR: DWLEE01			
								INITIAL REVISION:			
								DRWN: TREGORI		2010/10/06	
								APPR: JCOMERCI		2010/10/22	
								DOCUMENT NUMBER		DOC TYPE DOC PART REVISION	
								SD-45802-0001		PSD 001 J4	
								CUSTOMER		SHEET NUMBER	
								GENERAL MARKET		1 OF 3	



TIN PARTS LEAD CODE = "2"	STACK HEIGHT:					8mm	10mm	18mm		
	DIM B:					10.51	12.51	20.51		
	DIM C:					8.90	10.90	18.90		
	ROWS	DIM A	DIM D	DIM E	DIM F	DIM G	MATERIAL NO	MATERIAL NO	MATERIAL NO	
	07	12.00	31.89	12.15	12.00	12.00				
	09	16.00	35.89	14.15	16.00	16.00				
	11	20.00	39.89	16.15	20.00	20.00	45802-0311		45802-1211	
	13	24.00	43.89	18.15	24.00	24.00				
	15	28.00	47.89	20.15	28.00	28.00	45802-0215			
	17	32.00	51.89	22.15	32.00	32.00				
19	36.00	55.89	24.15	36.00	36.00					
21	40.00	59.89	26.15	40.00	40.00					
23	44.00	63.89	28.15	44.00	44.00	45802-0223	45802-2223			
25	48.00	67.89	30.15	48.00	48.00					
27	52.00	71.89	32.15	52.00	52.00					



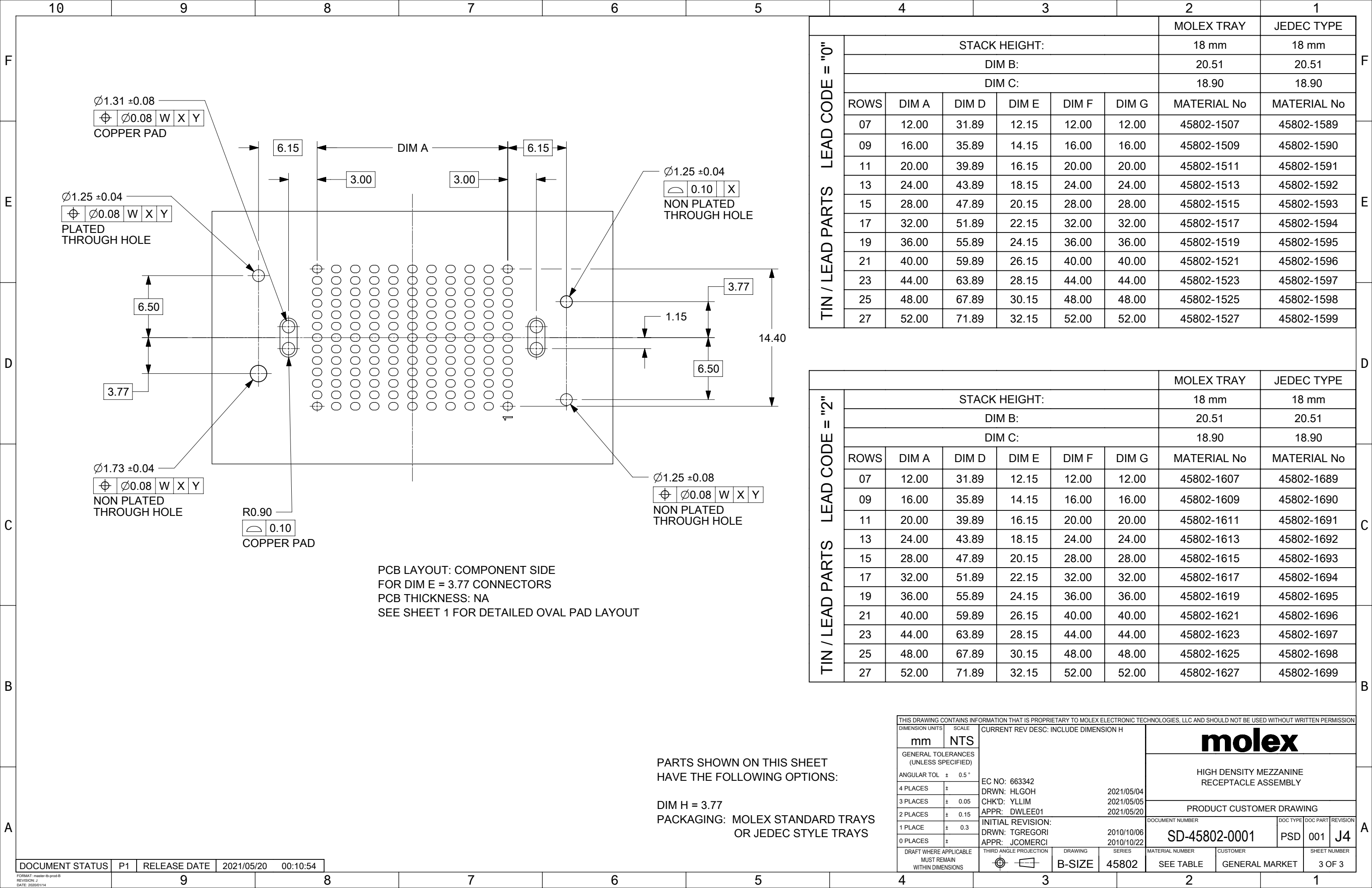
PARTS SHOWN ON THIS SHEET  
HAVE THE FOLLOWING OPTIONS:

DIM H = 6.50  
PACKAGING: MOLEX STANDARD TRAYS

NOTE:  
1. SOLDER CHARGE COMPOSITION  
TIN/LEAD: Sn 63/Pb 37  
TIN Sn 95.5/ Ag 3.8/ Cu 0.7

THIS DRAWING CONTAINS INFORMATION THAT IS PROPRIETARY TO MOLEX ELECTRONIC TECHNOLOGIES, LLC AND SHOULD NOT BE USED WITHOUT WRITTEN PERMISSION											
DIMENSION UNITS		SCALE		CURRENT REV DESC: INCLUDE DIMENSION H							
mm		NTS									
GENERAL TOLERANCES (UNLESS SPECIFIED)				EC NO: 663342						HIGH DENSITY MEZZANINE RECEPTACLE ASSEMBLY	
ANGULAR TOL ± 0.5°				DRWN: HLG0H 2021/05/04							
4 PLACES ±				CHK'D: YLLIM 2021/05/05						PRODUCT CUSTOMER DRAWING	
3 PLACES ± 0.05				APPR: DWLEE01 2021/05/20							
2 PLACES ± 0.15				INITIAL REVISION:						DOCUMENT NUMBER	
1 PLACE ± 0.3				DRWN: TREGORI 2010/10/06							
0 PLACES ±				APPR: JCOMERCI 2010/10/22						SD-45802-0001	
DRAFT WHERE APPLICABLE MUST REMAIN WITHIN DIMENSIONS				THIRD ANGLE PROJECTION		DRAWING		SERIES		SHEET NUMBER	
						B-SIZE		45802		2 OF 3	
				MATERIAL NUMBER		CUSTOMER		DOC TYPE		DOC PART	
				SEE TABLE		GENERAL MARKET		PSD		001	

DOCUMENT STATUS	P1	RELEASE DATE	2021/05/20	00:10:54
-----------------	----	--------------	------------	----------



TIN / LEAD PARTS LEAD CODE = "0"

STACK HEIGHT:						MOLEX TRAY	JEDEC TYPE
STACK HEIGHT:						18 mm	18 mm
DIM B:						20.51	20.51
DIM C:						18.90	18.90
ROWS	DIM A	DIM D	DIM E	DIM F	DIM G	MATERIAL No	MATERIAL No
07	12.00	31.89	12.15	12.00	12.00	45802-1507	45802-1589
09	16.00	35.89	14.15	16.00	16.00	45802-1509	45802-1590
11	20.00	39.89	16.15	20.00	20.00	45802-1511	45802-1591
13	24.00	43.89	18.15	24.00	24.00	45802-1513	45802-1592
15	28.00	47.89	20.15	28.00	28.00	45802-1515	45802-1593
17	32.00	51.89	22.15	32.00	32.00	45802-1517	45802-1594
19	36.00	55.89	24.15	36.00	36.00	45802-1519	45802-1595
21	40.00	59.89	26.15	40.00	40.00	45802-1521	45802-1596
23	44.00	63.89	28.15	44.00	44.00	45802-1523	45802-1597
25	48.00	67.89	30.15	48.00	48.00	45802-1525	45802-1598
27	52.00	71.89	32.15	52.00	52.00	45802-1527	45802-1599

TIN / LEAD PARTS LEAD CODE = "2"

STACK HEIGHT:						MOLEX TRAY	JEDEC TYPE
STACK HEIGHT:						18 mm	18 mm
DIM B:						20.51	20.51
DIM C:						18.90	18.90
ROWS	DIM A	DIM D	DIM E	DIM F	DIM G	MATERIAL No	MATERIAL No
07	12.00	31.89	12.15	12.00	12.00	45802-1607	45802-1689
09	16.00	35.89	14.15	16.00	16.00	45802-1609	45802-1690
11	20.00	39.89	16.15	20.00	20.00	45802-1611	45802-1691
13	24.00	43.89	18.15	24.00	24.00	45802-1613	45802-1692
15	28.00	47.89	20.15	28.00	28.00	45802-1615	45802-1693
17	32.00	51.89	22.15	32.00	32.00	45802-1617	45802-1694
19	36.00	55.89	24.15	36.00	36.00	45802-1619	45802-1695
21	40.00	59.89	26.15	40.00	40.00	45802-1621	45802-1696
23	44.00	63.89	28.15	44.00	44.00	45802-1623	45802-1697
25	48.00	67.89	30.15	48.00	48.00	45802-1625	45802-1698
27	52.00	71.89	32.15	52.00	52.00	45802-1627	45802-1699

PARTS SHOWN ON THIS SHEET  
HAVE THE FOLLOWING OPTIONS:

DIM H = 3.77  
PACKAGING: MOLEX STANDARD TRAYS  
OR JEDEC STYLE TRAYS

THIS DRAWING CONTAINS INFORMATION THAT IS PROPRIETARY TO MOLEX ELECTRONIC TECHNOLOGIES, LLC AND SHOULD NOT BE USED WITHOUT WRITTEN PERMISSION

DIMENSION UNITS	SCALE	CURRENT REV DESC: INCLUDE DIMENSION H		<b>molex</b>			
mm	NTS						
GENERAL TOLERANCES (UNLESS SPECIFIED)				HIGH DENSITY MEZZANINE RECEPTACLE ASSEMBLY			
ANGULAR TOL	± 0.5°	EC NO: 663342		PRODUCT CUSTOMER DRAWING			
4 PLACES	±	DRWN: HLG0H		DOCUMENT NUMBER			
3 PLACES	± 0.05	CHK'D: YLLIM		SD-45802-0001			
2 PLACES	± 0.15	APPR: DWLEE01		DOC TYPE			
1 PLACE	± 0.3	INITIAL REVISION:		DOC PART			
0 PLACES	±	DRWN: TREGORI		REVISION			
DRAFT WHERE APPLICABLE MUST REMAIN WITHIN DIMENSIONS		THIRD ANGLE PROJECTION		SERIES		SHEET NUMBER	
		DRAWING		45802		3 OF 3	