

High Performance RFI Filters for Switching Power Supplies



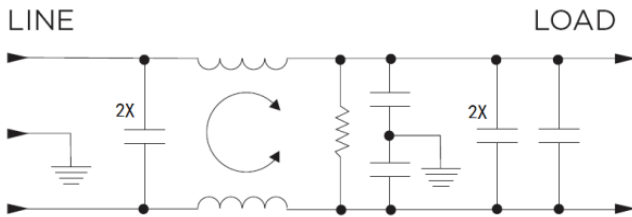
AMI-M11S/M11T, M12W/M12X/M12Y Series
Metal Enclosure Single Phase Single Stage Filters

AMI Designation	Input/output Style				Current Rating	Inductance	Capacitance		Resistor	Leakage Current @ 120 VAC 60Hz/250 VAC 50 Hz	TIL Insertion Loss	Case Style
	Available Part Numbers	6.3mm Spade Terminals	Wire Leads	Threaded Bolts			IEC	mH				
nF					pF							
AMI-M11S-1-3-C	1	-	-	-	3	36.8	940	4000	330	0.30/0.50	001	A
AMI-M11S-1-6-C	1	-	-	-	6	18.5	940	4000	330	0.30/0.50	002	A
AMI-M12W-1-10-C	1	-	-	-	10	9.5	1770	4000	165	0.30/0.50	003	A
AMI-M12X-1-15-C	1	-	-	-	15	5.07	2072	4000	165	0.30/0.50	004	B
AMI-M12Y-1-20-C	1	-	-	-	20	3.88	2770	4000	110	0.30/0.50	005	B
AMI-M11S-3-3-C	-	3	-	-	3	36.8	940	4000	330	0.30/0.50	001	C
AMI-M11S-3-6-C	-	3	-	-	6	18.5	940	4000	330	0.30/0.50	002	C
AMI-M12W-3-10-C	-	3	-	-	10	9.5	1770	4000	165	0.30/0.50	003	C
AMI-M11S-7-3-C	-	-	-	7	3	36.8	940	4000	330	0.30/0.50	001	E
AMI-M11T-7-6-C	-	-	-	7	6	18.5	1089	4000	330	0.30/0.50	002	E
AMI-M12X-6-15-C	-	-	6	-	15	5.07	2072	4000	165	0.30/0.50	004	D
AMI-M12Y-6-20-C	-	-	6	-	20	3.88	2770	4000	110	0.30/0.50	005	D
AMI-M12W-1-10-D	1	-	-	-	10	9.5	1770	10000	165	0.75/1.2	006	A
AMI-M12X-1-15-D	1	-	-	-	15	5.07	2075	15000	165	0.75/1.2	007	B
AMI-M12Y-1-20-D	1	-	-	-	20	3.88	2770	15000	110	0.75/1.2	008	B
AMI-M12W-3-10-D	-	3	-	-	10	9.5	1770	10000	165	0.75/1.2	006	C
AMI-M12X-6-15-D	-	-	6	-	15	5.07	2075	15000	165	0.75/1.2	007	D
AMI-M12Y-6-20-D	-	-	6	-	20	3.88	2770	15000	110	0.75/1.2	008	D

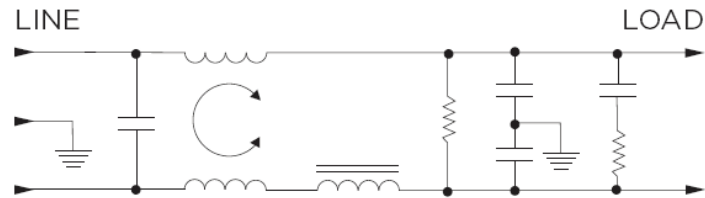
High Performance RFI Filters for Switching Power Supplies

Electrical Schematic

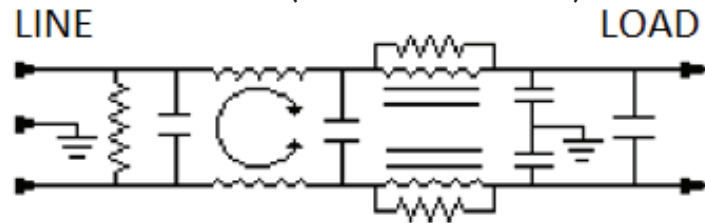
AMI-M11T (AMI-M11T-7-6-C)



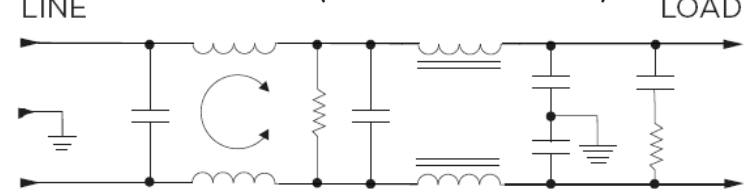
AMI-M12W (AMI-M12W-X-10-X)



AMI-M12X (AMI-M12X-X-20-X)



AMI-M12Y (AMI-M12Y-X-15-X)



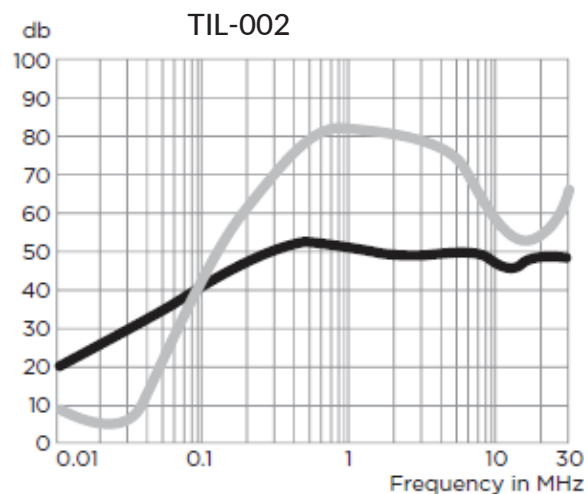
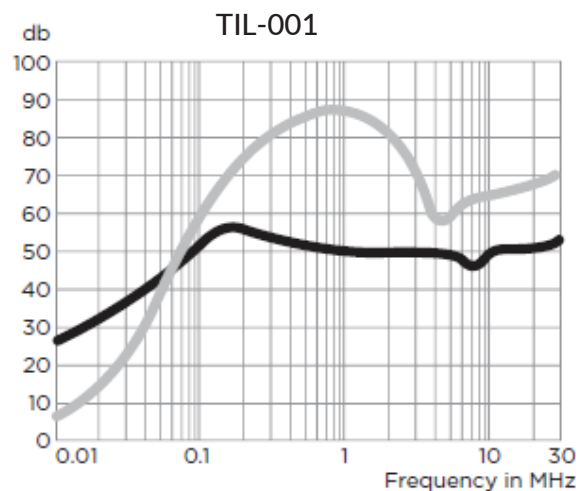
High Performance RFI Filters for Switching Power Supplies

Specifications:

- Rated Voltage (max): 250 VAC
- Operating Frequency: 50/60 Hz
- Operating Current: 3 to 20 A
- Hi-pot Rating (one minute): Line to Ground: 2250 VDC
Line to Line: 1450 VDC
- Operating Ambient Temperature Range (at rated current I_r): -10°C to +40°C. In an ambient temperature (T_a) higher than +40°C the maximum operating current (I_o) is calculated as follows: $I_o = I_r \sqrt{[(85 - T_a)/45]}$

Performance Data Typical Insertion Loss

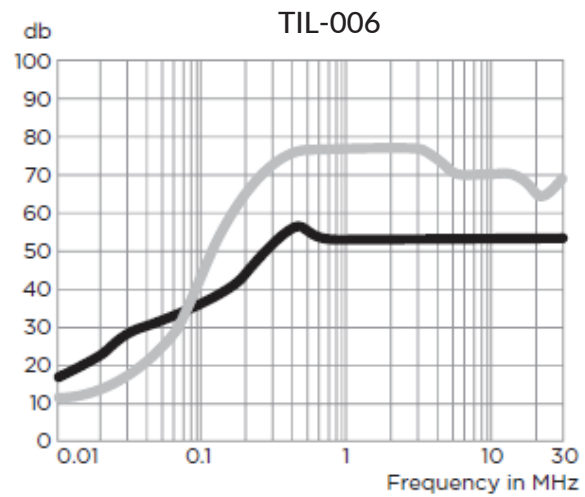
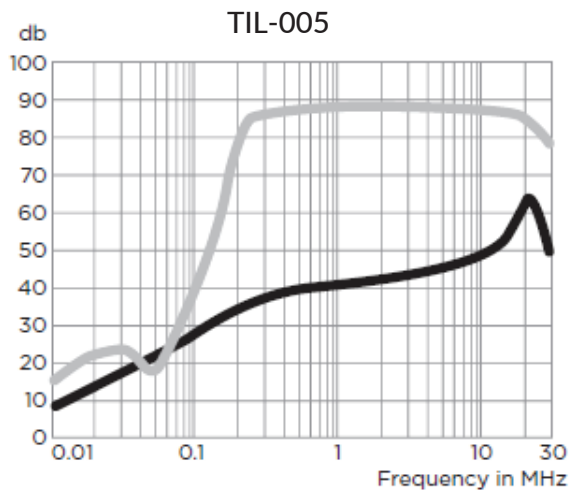
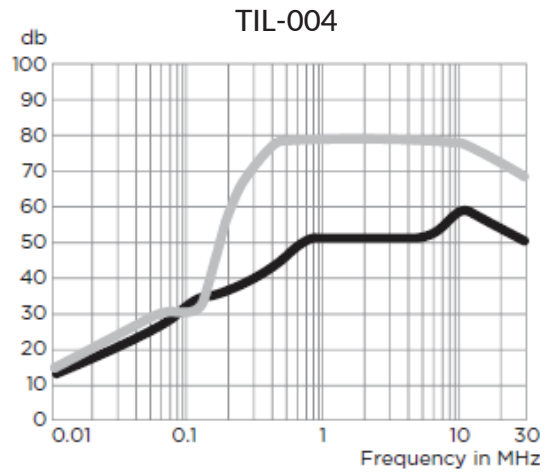
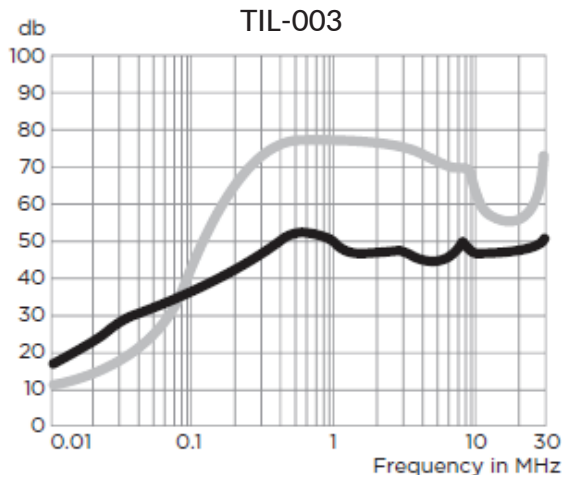
Measured in closed 50 Ohm system



High Performance RFI Filters for Switching Power Supplies

Performance Data Typical Insertion Loss

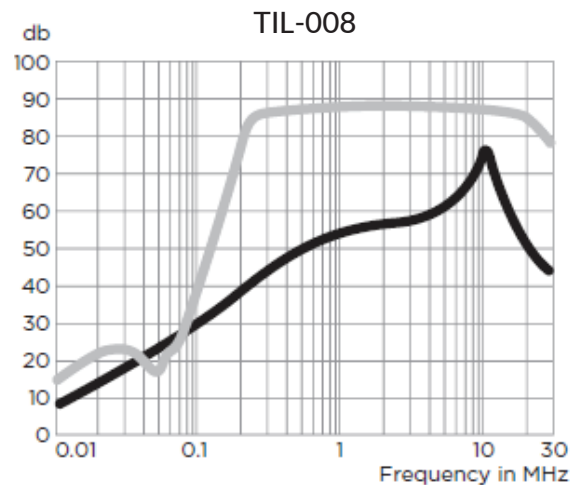
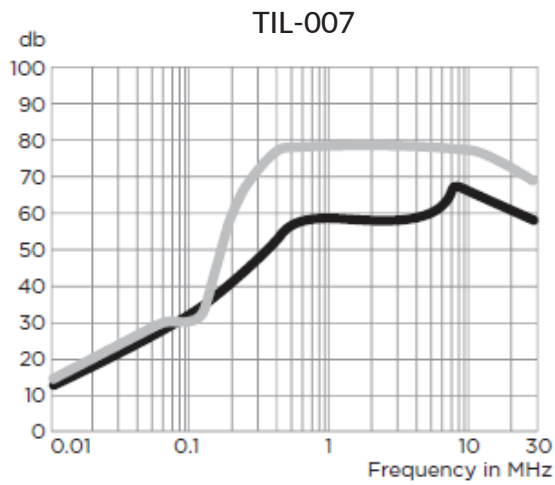
Measured in closed 50 Ohm system



High Performance RFI Filters for Switching Power Supplies

Performance Data Typical Insertion Loss

Measured in closed 50 Ohm system



— Common Mode / Asymmetrical (L-G)
— Differential Mode / Symmetrical (L-L)

High Performance RFI Filters for Switching Power Supplies

Minimum Insertion Loss

Measured in closed 50 Ohm system

Common Mode/Asymmetrical (Line to Ground)

Current Rating	Frequency-MHz										
	.01	.03	.05	.15	.5	1	2	5	10	20	30
AMI-M11S-X-3-C	22	32	36	46	47	44	43	40	42	42	42
AMI-M11S-X-6-C AMI-M11T-7-6-C	16	26	30	41	47	44	43	43	40	42	42
AMI-M12W-X-10-C	12	22	26	36	47	42	42	40	42	42	45
AMI-M12X-X-15-C	8	17	22	31	43	44	44	42	47	52	43
AMI-M12Y-X-20-C	3	12	17	26	34	36	37	37	42	47	38
AMI-M12W-X-10-D	12	22	26	38	52	50	50	50	50	50	50
AMI-M12X-X-15-D	8	17	22	33	52	52	52	52	57	45	35
AMI-M12Y-X-20-D	3	12	17	29	42	47	50	51	56	40	30

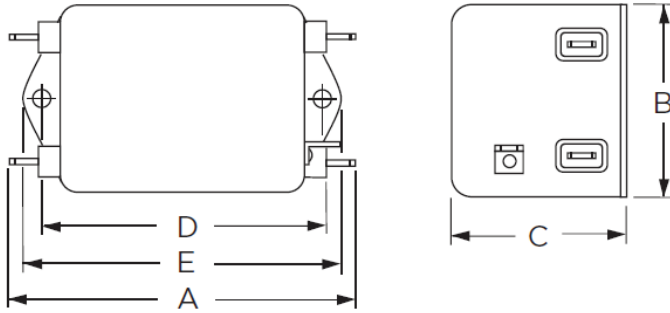
Differential Mode/Symmetrical (Line to Line)

Current Rating	Frequency-MHz										
	.01	.03	.05	.15	.5	1	2	5	10	20	30
AMI-M11S-X-3-C	3	1	30	61	70	70	70	50	50	50	55
AMI-M11S-X-6-C AMI-M11T-7-6-C	4	2	14	51	70	70	70	65	47	50	55
AMI-M12W-X-10-C	7	12	17	52	70	70	70	65	55	50	60
AMI-M12X-X-15-C	12	19	15	51	70	70	70	70	70	65	60
AMI-M12Y-X-20-C	10	17	13	51	70	70	70	70	67	65	60
AMI-M12W-X-10-D	7	12	17	52	70	70	70	65	65	50	65
AMI-M12X-X-15-D	12	19	15	51	70	70	70	70	70	65	60
AMI-M12Y-X-20-D	10	17	13	51	70	70	70	70	67	65	60

High Performance RFI Filters for Switching Power Supplies

Case Styles

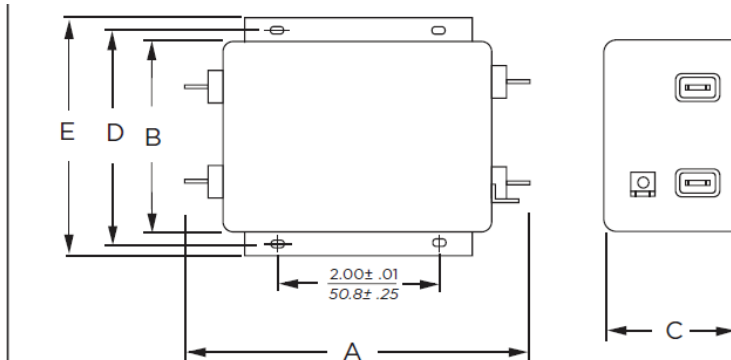
STYLE A



Typical Dimensions:

- Line/Load Terminals (4): .250 [6.3] with .07 [1.8] Dia. hole
- Ground Terminal (1): .250 [6.3] with .07 x .16 [1.8 x 3.8] slot
- Mounting Holes (2): .188 [4.78] Dia.

STYLE B



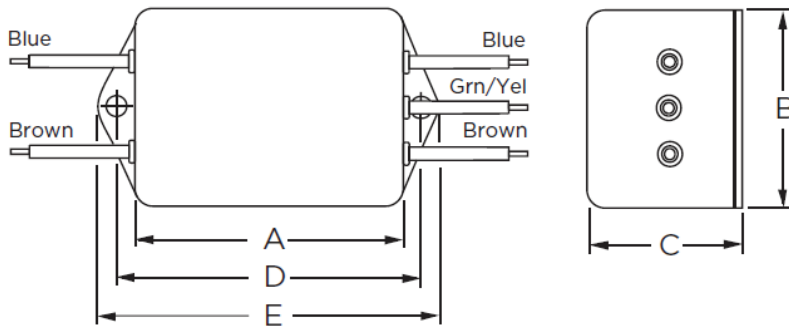
Typical Dimensions:

- Line/Load Terminals (4): .250 [6.3] with .07 [1.8] Dia. hole
- Ground Terminal (1): .250 [6.3] with .07 x .16 [1.8 x 3.8] slot
- Mounting Slots (4): .250 x .156 [6.35 x 3.96] Dia.

High Performance RFI Filters for Switching Power Supplies

Case Styles

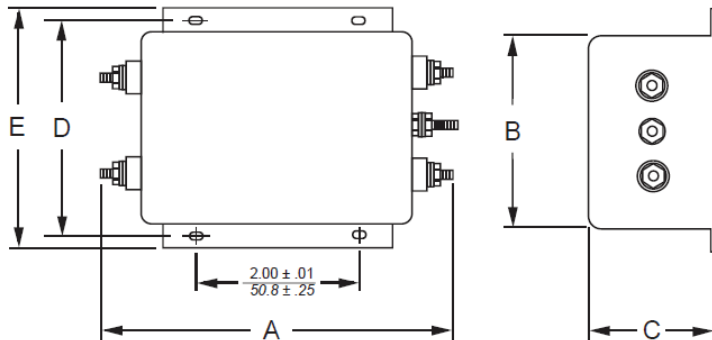
STYLE C



Typical Dimensions:

Wire Leads (5): 4.0 [101.6] Min., AWG18
Mounting Holes (2): .188 [4.78] Dia.

STYLE D



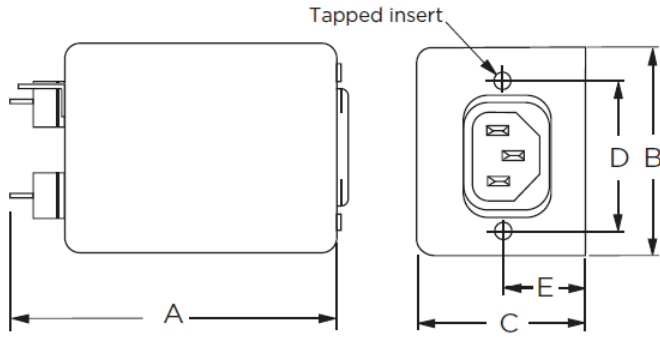
Typical Dimensions:

Terminals (5): 8-32, Torque 18 lbf-in. [2.03 N-m] max. ± 2 [.22]
Mounting Slots (4): .250 x .156 [6.35 x 3.96] Dia.

High Performance RFI Filters for Switching Power Supplies

Case Styles

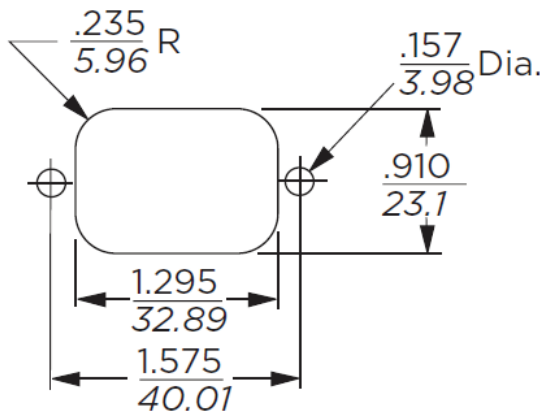
STYLE E



Typical Dimensions:

Load Terminals (2):	.250 [6.3] with .07 [1.8] Dia. hole
Ground Terminal (1):	.250 [6.3] with .07 x .16 [1.8 x 3.8] slot
Line Inlet (1):	IEC 60320-1 C14
Tapped Inserts (2):	6-32 x 1/4

Recommended Panel Cutout



Tolerance $\pm .005$ [0.13]

High Performance RFI Filters for Switching Power Supplies

Mechanical Dimensions:

Model Number	A max	B max	C max	D $\begin{smallmatrix} \pm .015 \\ \pm .38 \end{smallmatrix}$	E max
AMI-M11S-1-3/6-C	3.56"/90.4mm	2.15"/54.6mm	1.81"/46.0mm	2.938"/74.63mm	3.38"/85.9mm
AMI-M11S-3-3/6-C	2.55"/64.8mm	2.15"/54.6mm	1.81"/46.0mm	2.938"/74.63mm	3.38"/85.9mm
AMI-M11S-7-3-C AMI-M11T-7-6-C	3.52"/89.4mm	2.25"/57.2mm	1.78"/45.2mm	1.575"/40.01mm	*0.63"/16.0mm
AMI-M12W-1-10-X	4.69"/119.1mm	2.27"/57.7mm	1.80"/45.7mm	4.063"/103.2mm	4.47"/113.5mm
AMI-M12W-3-10-X	3.69"/93.7mm	2.27"/57.7mm	1.80"/45.7mm	4.063"/103.2mm	4.47"/113.5mm
AMI-M12X/M12Y-1-15/20-X	5.45"/138.4mm	3.12"/79.2mm	2.18"/55.4mm	3.5"/88.9mm	3.96"/100.6mm
AMI-M12X/M12Y-6-15/20-X	5.95"/151.1mm	3.12"/79.2mm	2.18"/55.4mm	3.5"/88.9mm	3.96"/100.6mm

*±0.02/0.5