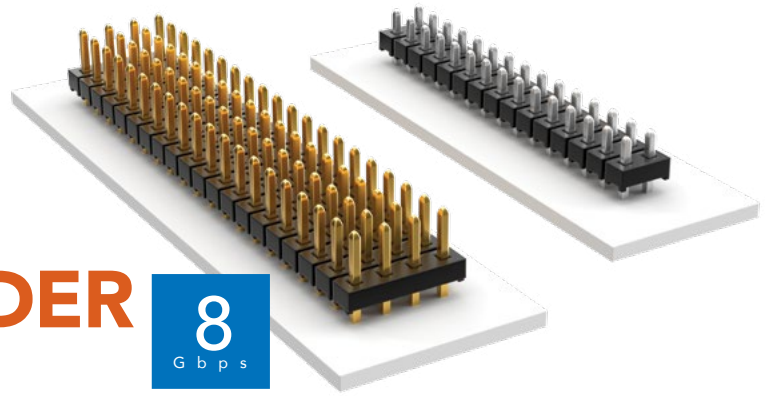


THROUGH-HOLE LOW-PROFILE HEADER



(2.00 mm) .0787" PITCH • TMM SERIES

TMM

Board Mates:
CLT, SQT, SQW, ESQT,
TLE, SMM, MMS

Cable Mates:
TCSD

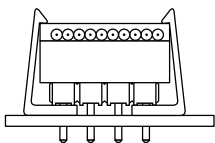
SPECIFICATIONS

Insulator Material:
Black Liquid Crystal Polymer
Terminal Material:
Phosphor Bronze
Plating:
Sn or Au over
50 μ" (1.27 μm) Ni
Current Rating (SMM/TMM):
3.2 A per row
(2 pins powered)
Operating Temp Range:
-55 °C to +105 °C with Tin;
-55 °C to +125 °C with Gold
Voltage Rating:
281 VAC mated with SQW;
250 VAC mated with SQT

PROCESSING

Lead-Free Solderable:
Yes

APPLICATION



Retention Clip Option (-RC)

ALSO AVAILABLE

Other plating
(MOQ Required)



Note:
Some lengths, styles and
options are non-standard,
non-returnable.

TMM	1	NO. PINS PER ROW	LEAD STYLE	PLATING OPTION	ROW OPTION	OTHER OPTION
-----	---	------------------	------------	----------------	------------	--------------

02 thru 50

Specify LEAD STYLE from chart

-F
= Gold flash on post,
Matte Tin on tail

-L
= 10 μ" (0.25 μm)
Gold on post,
Matte Tin on tail

-S
= 30 μ" (0.76 μm)
Gold on post,
Matte Tin on tail

-T
= Matte Tin

-S
= Single Row

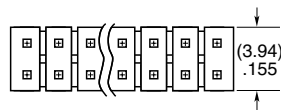
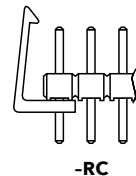
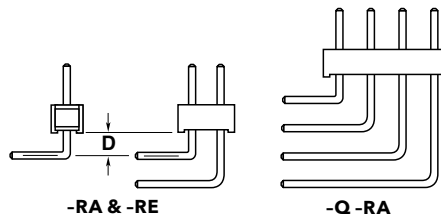
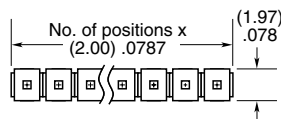
-D
= Double Row

-Q
= Four Row

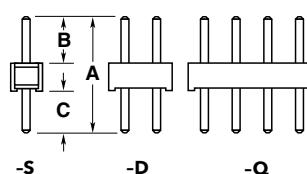
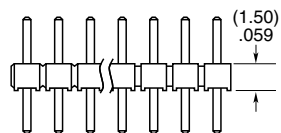
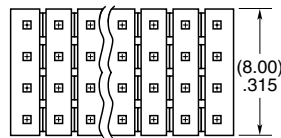
-RA & -RE
= Right-angle (Lead Style -01 only)
(2 positions minimum, -Q row)

-RC
= Retention Clip (Mates with TCSD)
(Double row only, 4 positions minimum, only available -06 lead style)

"XXX"
= Polarized Position
(Specify position of omitted pin)



OPTION	D
-RA	(1.27) .050
-RE	(3.56) .140



LEAD STYLE	A	B	C
-01		(3.20) .126	(3.50) .138
-02	(8.20) .323	(3.70) .146	(3.00) .118
-03		(4.00) .158	(2.70) .106
-04	(5.69) .224	(1.91) .075	(2.29) .090
-05	(5.43) .214	(1.65) .065	
-06	(9.58) .377	(3.20) .126	(4.88) .192