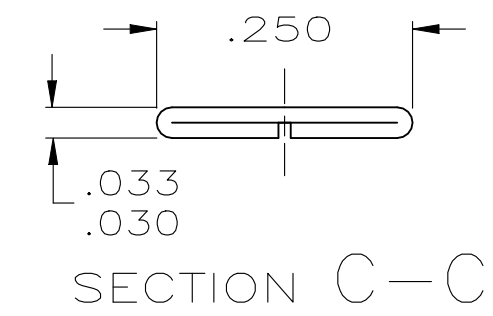
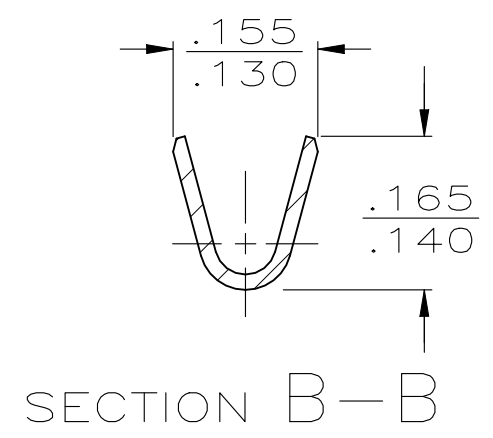
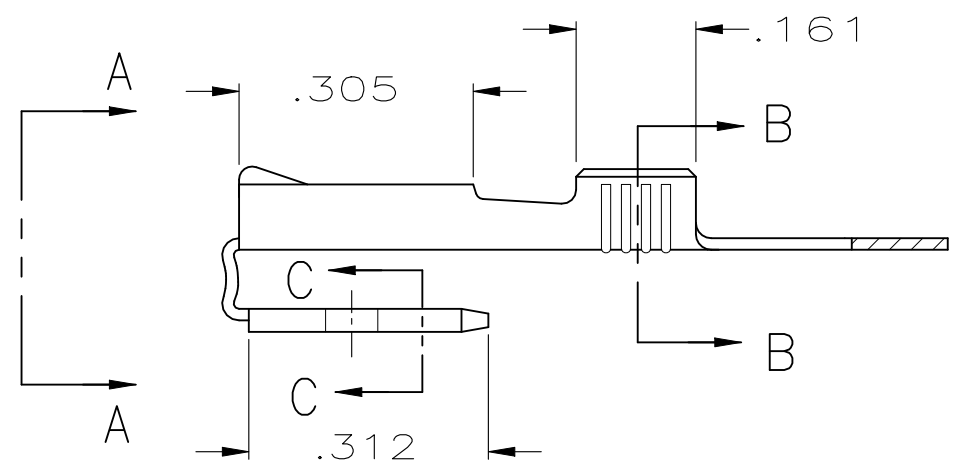
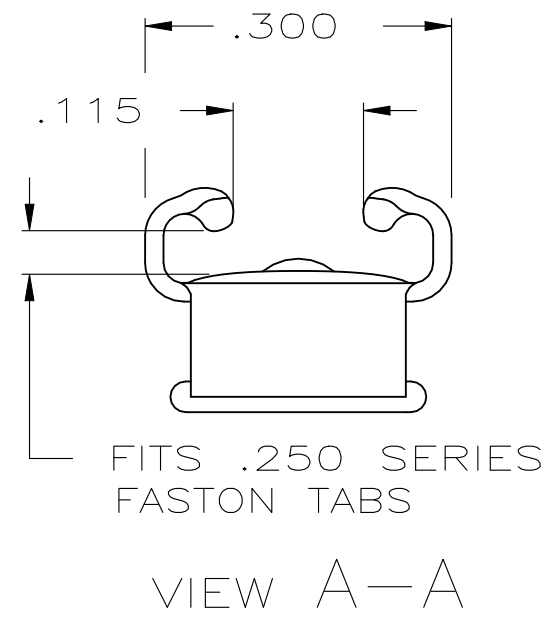
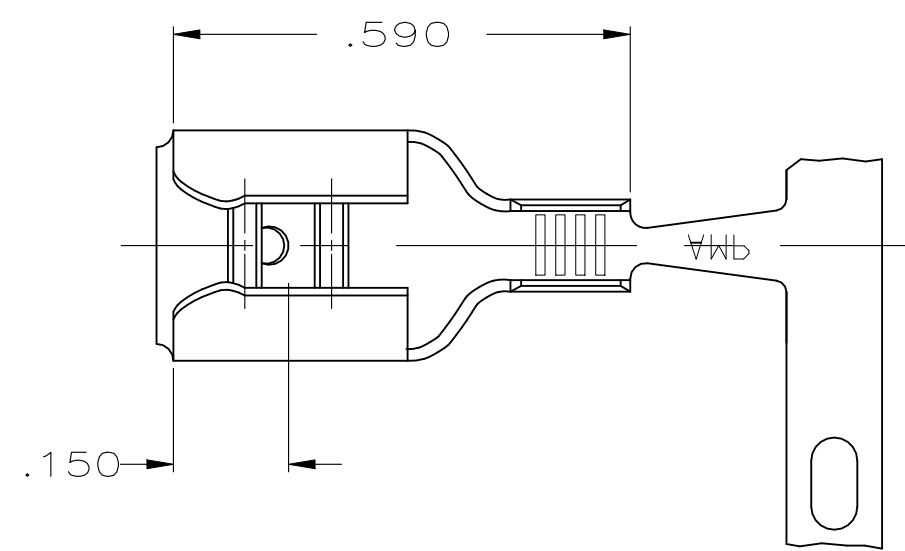


REVISIONS					
P	LTR	DESCRIPTION	DATE	DWN	APVD
	H	REVISED PER ECR-23-179643	19JUL2023	DB	DH

- CONTINUOUS STRIP ON REELS.
- THE GAP ON THE ROLLS TO BE IN CONTACT WITH THE TAB FOR THE LENGTH OF THE ROLL BEHIND THE LEAD-IN.



POST-TIN	18-14	.032 ±.001	62276-2
PRE-TIN	18-14	.032 ±.001	62276-1
FINISH	WIRE SIZE	TAB THK.	PART NO

THIS DRAWING IS A CONTROLLED DOCUMENT.		DWN JR RUTH 5/28/86	STE TE Connectivity													
DIMENSIONS: INCHES		CHK G YETTER 5/28/86														
TOLERANCES UNLESS OTHERWISE SPECIFIED:		APVD C MEYERS 5/28/86	NAME .250 SERIES FASTON PIGGY-BACK RECEPTACLE													
<table border="1"> <tr><td>0 PLC</td><td>± -</td></tr> <tr><td>1 PLC</td><td>± -</td></tr> <tr><td>2 PLC</td><td>± -</td></tr> <tr><td>3 PLC</td><td>± .015</td></tr> <tr><td>4 PLC</td><td>± -</td></tr> <tr><td>ANGLES</td><td>± -</td></tr> </table>		0 PLC	± -	1 PLC	± -	2 PLC	± -	3 PLC	± .015	4 PLC	± -	ANGLES	± -	PRODUCT SPEC -	APPLICATION SPEC 114-2082	
0 PLC	± -															
1 PLC	± -															
2 PLC	± -															
3 PLC	± .015															
4 PLC	± -															
ANGLES	± -															
MATERIAL BRASS	FINISH SEE TABLE	WEIGHT 0.000000	SIZE A3	CAGE CODE 00779												
CUSTOMER DRAWING			DRAWING NO C-62276	RESTRICTED TO -												
			SCALE 4:1	SHEET 1 OF 1												
			REV H													