

## Printed-circuit board connector - BCH-500H-14 GY - 5432601

Please be informed that the data shown in this PDF Document is generated from our Online Catalog. Please find the complete data in the user's documentation. Our General Terms of Use for Downloads are valid (<http://phoenixcontact.com/download>)

Header, Nominal current: 12 A, Rated voltage (III/2): 320 V, Number of positions: 14, Pitch: 5 mm, Color: signal grey, Contact surface: Tin, Mounting: Soldering



The figure shows a 5-pos. version of the product



### Key commercial data

|                        |          |
|------------------------|----------|
| Packing unit           | 1 pc     |
| Minimum order quantity | 100 pc   |
| Custom tariff number   | 85366990 |
| Country of origin      | China    |

### Technical data

#### Dimensions

|                |          |
|----------------|----------|
| Length         | 12 mm    |
| Pitch          | 5 mm     |
| Dimension a    | 65 mm    |
| Pin dimensions | 1 x 1 mm |
| Hole diameter  | 1.4 mm   |

#### General

|                             |       |
|-----------------------------|-------|
| Range of articles           | BCH-H |
| Insulating material group   | I     |
| Rated surge voltage (III/3) | 4 kV  |
| Rated surge voltage (III/2) | 4 kV  |
| Rated surge voltage (II/2)  | 4 kV  |
| Rated voltage (III/3)       | 250 V |
| Rated voltage (III/2)       | 320 V |
| Rated voltage (II/2)        | 400 V |

# Printed-circuit board connector - BCH-500H-14 GY - 5432601

## Technical data

### General

|   |             |
|---|-------------|
| Connection in acc. with standard        | EN-VDE      |
| Nominal current I <sub>N</sub>          | 12 A        |
| Maximum load current                    | 12 A        |
| Insulating material                     | PA          |
| Inflammability class according to UL 94 | V0          |
| Color                                   | signal grey |
| Number of positions                     | 14          |

## Classifications

### eCl@ss

|            |          |
|------------|----------|
| eCl@ss 4.0 | 272607xx |
| eCl@ss 4.1 | 27260701 |
| eCl@ss 5.0 | 27260701 |
| eCl@ss 5.1 | 27260701 |
| eCl@ss 6.0 | 27261101 |
| eCl@ss 7.0 | 27440401 |
| eCl@ss 8.0 | 27440402 |

### ETIM

|          |          |
|----------|----------|
| ETIM 3.0 | EC001121 |
| ETIM 4.0 | EC002637 |
| ETIM 5.0 | EC002637 |

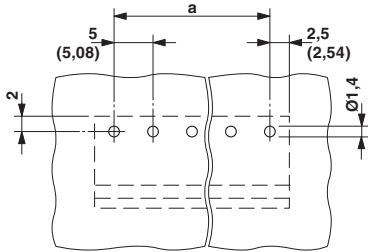
### UNSPSC

|               |          |
|---------------|----------|
| UNSPSC 6.01   | 30211801 |
| UNSPSC 7.0901 | 39121432 |
| UNSPSC 11     | 39121432 |
| UNSPSC 12.01  | 39121409 |
| UNSPSC 13.2   | 39121432 |

## Drawings

# Printed-circuit board connector - BCH-500H-14 GY - 5432601

Drilling diagram



Dimensioned drawing

