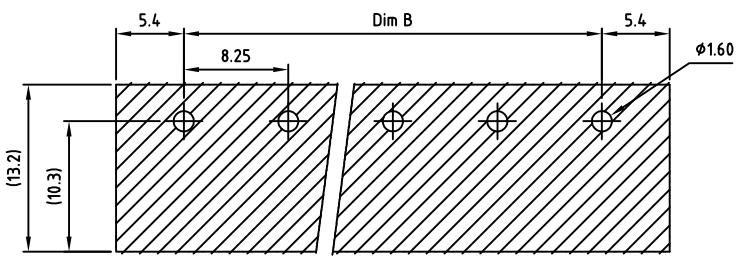
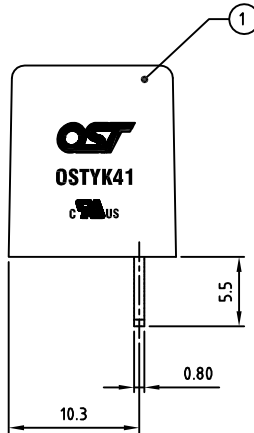
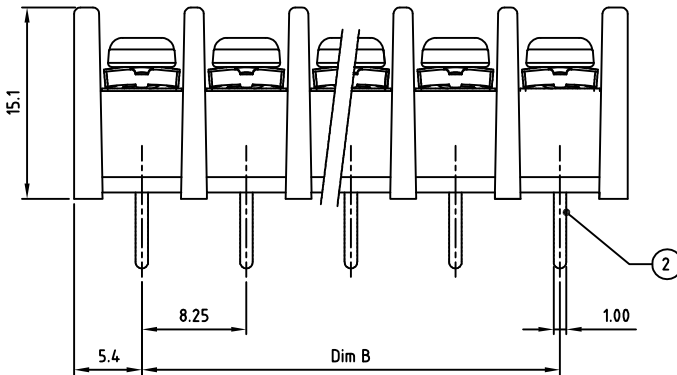
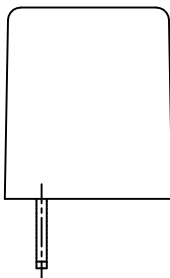
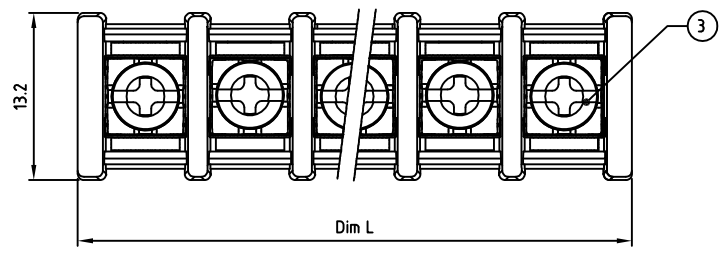


Transfer or duplication of this document as well as the utilisation or communication of its content are not permitted unless express consent is granted. Violations give rise to claims for damages. All rights reserved in case of patent, utility model or design patent registrations.



P.C.B LAYOUT

Technical data

- 1.Nominal voltage: 300V/20A
PITCH: 8.25mm
- 2.Connection capacity:
AWG 22-12
- 3.Insulation Withstanding Voltage:
AC 2500V/MIN
- 4.Insulation Resistance:
1000MΩ or more at DC500V
- 5.Tightening torque:
10.15kgf.cm (8.8 Lb-In / 1.0N.m)
- 6.Screw thread: M3
- 7.Operating temperature range:-40°C ~ 115°C
Soldering temperature:250°C±10°C /5s
- 8.Undimensioned Tolerances:

Dim.L=P×8.25+1.8		
Dim.B=(P-1)×8.25		
P= number of poles		
	Dim B	Dim L
0-30mm	±0.15	±0.20
over 30mm-60mm	±0.20	±0.30
over 60mm-90mm	±0.25	±0.40
over 90mm-180mm	±0.30	±0.50
over 180mm	±0.50	±0.80

- 9.Safety approval:
- 10.RoHS Compliance

Part No.: **OSTYK414XX030**

- No. of Poles
- 02 2 Poles
 - 03 3 Poles
 -
 - 24 24 Poles

3	SCREW+WASHER	STEEL	M3×0.5, Ni Plated	P
2	CONTACT	BRASS	M3×0.5, Tin PLATED	P
1	BODY	PA66 UL94V-0	Black	1
ITEM	NAME OF PART	MATERIAL	NOTES	Q'TY
DWG.	WF. Zhang	DATE	2017.10.31	UNITS: MM SHEET: 1 OF 1 Tolerance
CHK.	WF. Zhang	DATE	2017.10.31	SCALE: NONE 2:1 (:) REV.: A X. ±0.50 X.X ±0.30 X.XX ±0.10 X* ±1*
APP.		DATE		TITLE: OSTYK414 8.25 Series
				PART NO. OSTYK414XX030
				DWG NO. OSTYK414XX030.dwg

SIGN	DESCRIPTION	CHK.	DATE



ON-SHORE TECHNOLOGY, INC.