



- Limited Lifetime Warranty
- 300% Peak Power Capability
- Small Package Size
- Universal Input (85 - 265VAC)
- High Efficiency

## HWS300P & 600P Series

Peak Power Industrial Power Supplies

### Key Market Segments & Applications

- Factory Automation
- Process Control
- Semiconductor Fabrication
- Motor and Pump Drives

### HWS300P & 600P Features and Benefits

#### Features

- Limited Lifetime Warranty
- Peak Power Capability
- High Efficiency

#### Benefits

- Lower Cost of Ownership
- Lower cost, smaller size
- Easier system cooling, less power used

### Specifications

ITEMS	MODEL		HWS300P	HWS600P
Input Voltage range	-	-	85 - 265VAC (47 - 63Hz) or 120 - 330VDC	
Input Current (Typ)	(1)	A	3.6/1.9	7.2/3.7
Inrush Current	(1)	A	20 / 40	
Power Factor	-	-	Meets EN61000-3-2	
Temperature Coefficient	-	-	<0.02%/°C	
Overcurrent Protection	-	-	See table on page 2 (Recycle AC or remote on/off to reset)	
Overvoltage Protection	-	V	See table on page 2 (Recycle AC or remote on/off to reset)	
Hold Up Time (Typ)	-	ms	20	
Efficiency	(1)	%	84 / 87	
Leakage Curr. (@240VAC, 60Hz)	-	mA	<0.75mA (Typically 0.2mA at 100VAC)	
Remote Sense	-	-	No	
Indicator	-	-	Green LED = ON	
Remote on/off	-	-	Yes	
Line Regulation	-	mV	24V: 96mV, 36V: 144mV, 48V: 192mV	
Load Regulation	-	mV	24V: 144mV, 36V: 216mV, 48V: 288mV	
Ripple & Noise	-	mV	24V: 150mV, 36V: 200mV, 48V: 350mV	
Parallel operation	-	-	No	Yes, up to 2 units
DC Good	-	-	Yes	
Operating Temperature	-	-	-10°C to +70°C, derate linearly to 50% load from 50°C to 70°C	
Storage Temperature	-	-	-30°C to +85°C	
Humidity (non condensing)	-	-	Operating: 10 - 90%RH, Non operating 10 - 95%RH	
Cooling	-	-	Internal fan	
Withstand Voltage	-	-	Input to Ground 2.5kVAC, Input to Output 3kVAC, Output to Ground 500VAC for 1 min.	
Isolation Resistance	-	-	>100MΩ at 25°C & 70%RH, Output to Ground 500VDC	
Vibration (non operating)	-	-	10 - 55Hz (1 minute sweep), 19.6m/s <sup>2</sup> constant X, Y, Z 1 hour	
Shock	-	-	< 196.1 m/s <sup>2</sup>	
Safety Agency Certification	-	-	IEC/EN/UL/CSA 60950-1 and 62368-1, EN50178, CE Mark	
Line Dip	-	-	Complies with SEMI F47 (200VAC line only)	
Conducted & Radiated EMI	-	-	EN55011 / EN55022, FCC VCCI Class B	
Immunity	-	-	IEC61000-4-2, -3, -4, -6 (Level 3), -5, -8 (Level 4), -11	
Weight (Typ)	-	g	1,000	1,600
Size (WxHxD)	-	mm	61 x 82 x 165	100 x 82 x 165
Warranty	-	-	Limited Lifetime Warranty	

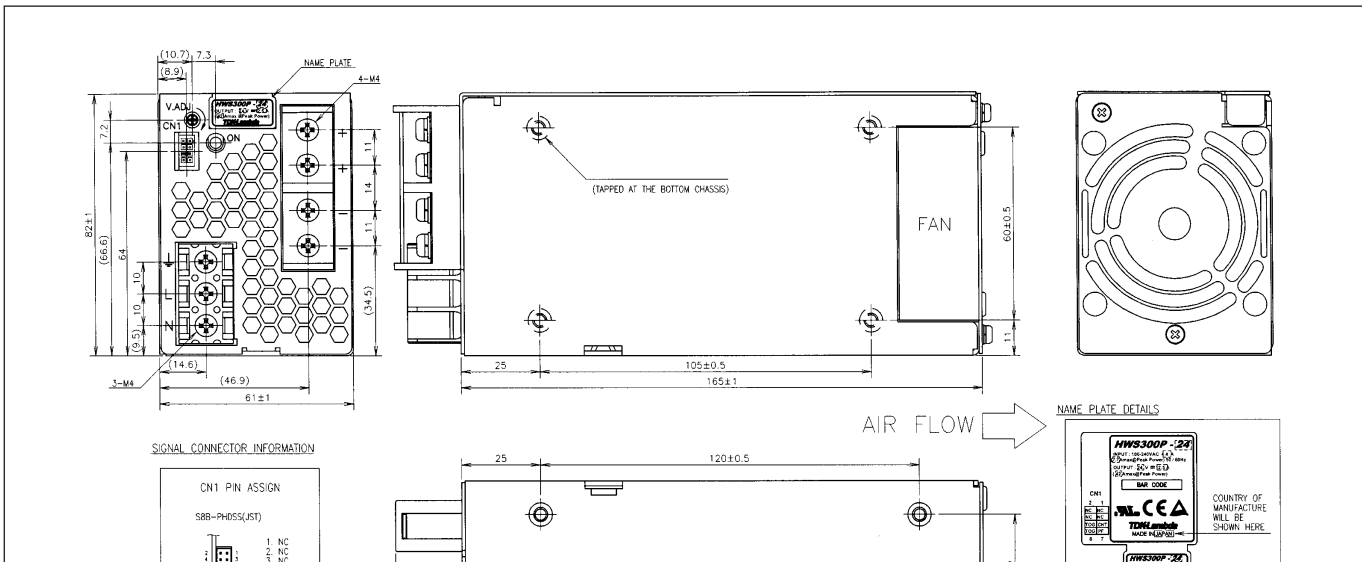
Notes: (1) 100/200VAC

Model Selector

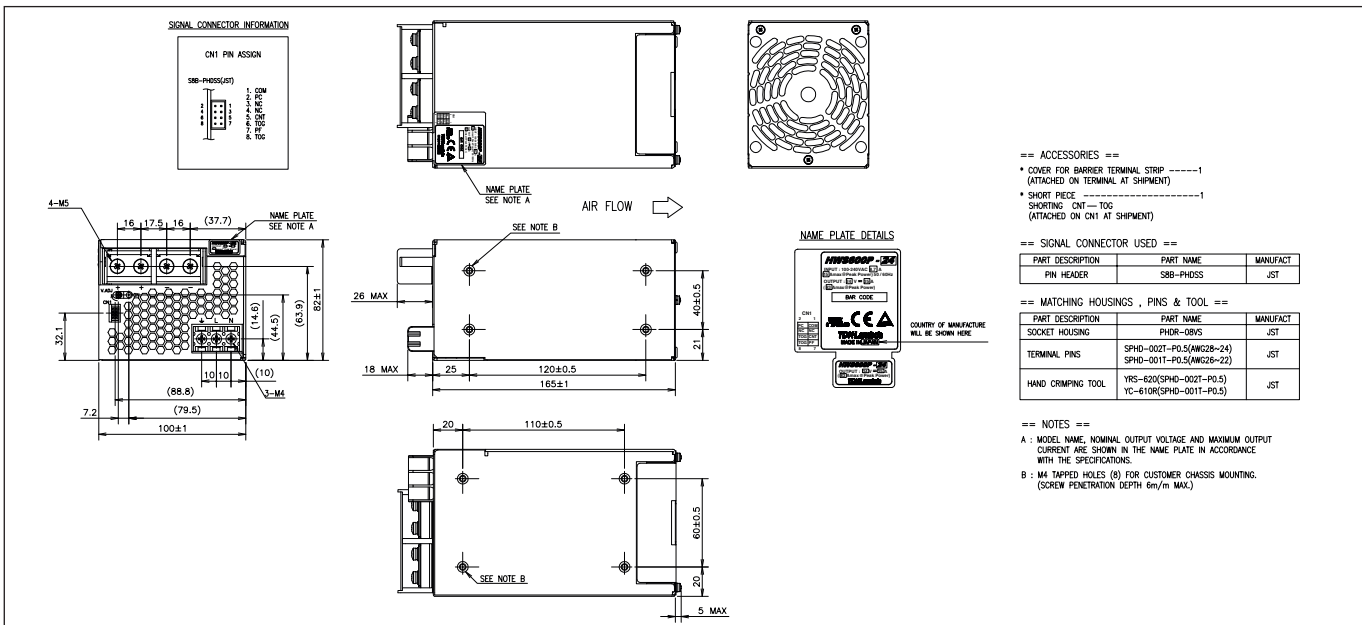
Model	Voltage V	Adjust Range V	Max Avg. Current A	Max Avg. Power W	Peak Current A (1,2)	Max Peak Power W (1)	Overcurrent Minimum A	Overvoltage V
HWS300P-24	24V	19.2 - 26.4	12.5	300	21 / 42	504 / 1008	21.4 / 42.8	27.6 - 32.4
HWS600P-24	24V	19.2 - 26.4	25	600	40.5 / 83	972 / 1992	41.3 / 84.6	27.6 - 32.4
HWS300P-36	36V	28.8 - 39.6	8.4	302.4	14 / 28	504 / 1008	14.3 / 28.6	41.4 - 48.6
HWS600P-36	36V	28.8 - 39.6	16.7	601.2	27 / 55.5	972 / 1998	27.5 / 56.6	41.4 - 48.6
HWS300P-48	48V	38.4 - 52.8	6.3	302.4	10.5 / 21	504 / 1008	10.7 / 21.4	55.2 - 64.8
HWS600P-48	48V	38.4 - 52.8	12.5	600	20 / 41.5	960 / 1992	20.4 / 42.3	55.2 - 64.8

**Notes**  
 (1) 100/200VAC  
 (2) 200-265VAC Input, 5s maximum on time up to 35% duty cycle (see instruction manual)

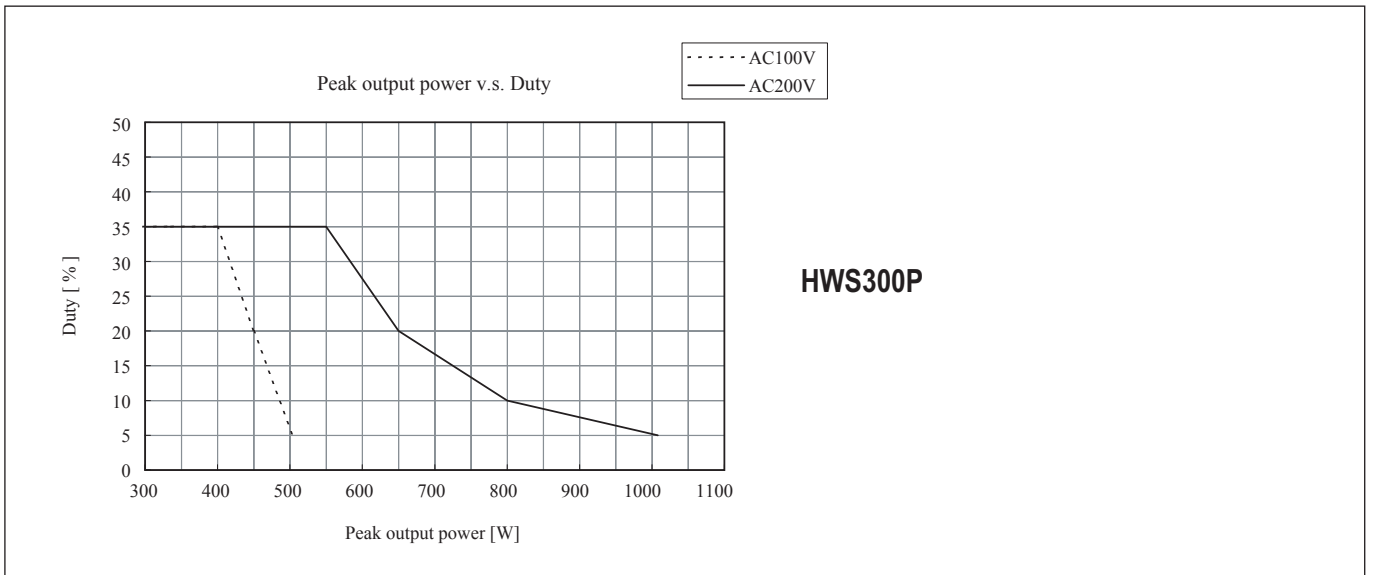
Outline Drawing HWS300P



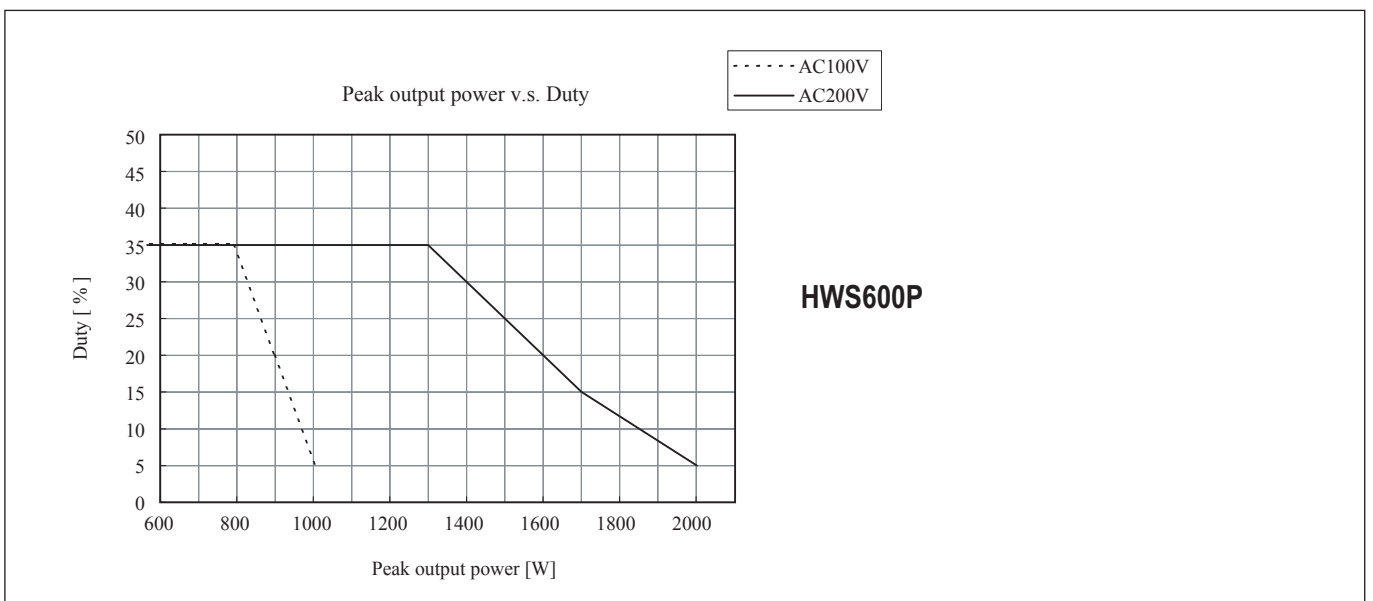
Outline Drawing HWS600P



**HWS300P Peak Output Power vs. Duty Cycle**



**HWS600P Peak Output Power vs. Duty Cycle**



**Options**

Suffix	Description
Blank	HWS300-1500 cover is fitted as standard
/A	Not applicable



## TDK-Lambda France SAS

Tel: +33 1 60 12 71 65  
 tf.fr.powersolutions@tdk.com  
 www.emea.lambda.tdk.com/fr



## Italy Sales Office

Tel: +39 02 61 29 38 63  
 tf.it.powersolutions@tdk.com  
 www.emea.lambda.tdk.com/it



## Netherlands

tf.nl.powersolutions@tdk.com  
 www.emea.lambda.tdk.com/nl



## TDK-Lambda Germany GmbH

Tel: +49 7841 666 0  
 tlg.powersolutions@tdk.com  
 www.emea.lambda.tdk.com/de



## Austria Sales Office

Tel: +43 2256 655 84  
 tlg.at.powersolutions@tdk.com  
 www.emea.lambda.tdk.com/at



## Switzerland Sales Office

Tel: +41 44 850 53 53  
 tlg.ch.powersolutions@tdk.com  
 www.emea.lambda.tdk.com/ch



## Nordic Sales Office

Tel: +45 8853 8086  
 tlg.dk.powersolutions@tdk.com  
 www.emea.lambda.tdk.com/dk



## TDK-Lambda UK Ltd.

Tel: +44 (0) 12 71 85 66 66  
 tlu.powersolutions@tdk.com  
 www.emea.lambda.tdk.com/uk



## TDK-Lambda Ltd.

Tel: +9 723 902 4333  
 tli.powersolutions@tdk.com  
 www.emea.lambda.tdk.com/il-en



## TDK-Lambda Americas

Tel: +1 800-LAMBDA-4 or 1-800-526-2324  
 tla.powersolutions@tdk.com  
 www.us.lambda.tdk.com



## TDK Electronics do Brasil Ltda

Tel: +55 11 3289-9599  
 sales.br@tdk-electronics.tdk.com  
 www.tdk-electronics.tdk.com/en



## TDK-Lambda Corporation

Tel: +81-3-6778-1113  
 www.jp.lambda.tdk.com



## TDK-Lambda (China) Electronics Co. Ltd.

Tel: +86 21 6485-0777  
 tlc.powersolutions@tdk.com  
 www.lambda.tdk.com.cn



## TDK-Lambda Singapore Pte Ltd.

Tel: +65 6251 7211  
 tfs.marketing@tdk.com  
 www.sg.lambda.tdk.com



## TDK India Private Limited, Power Supply Division

Tel: +91 80 4039-0660  
 mathew.philip@tdk.com  
 www.sg.lambda.tdk.com

