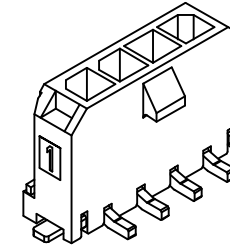
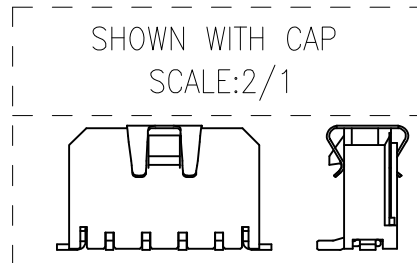
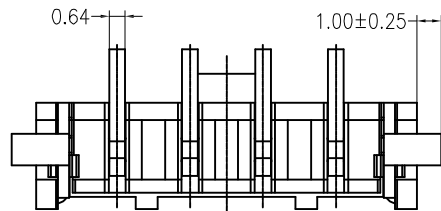
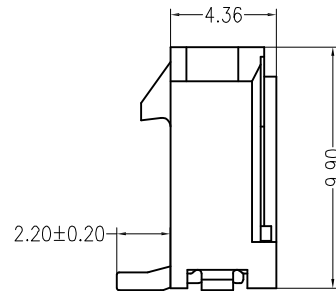
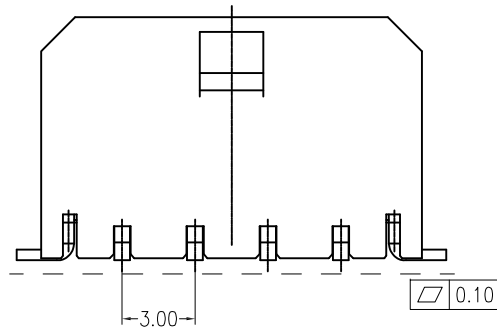


PCB LAYOUT(Tolerance:±0.05)



Specifications:

Contact resistance: ≤10mΩ
 Insulation resistance: ≥1000MΩ
 Rated voltage: 250V AC DC
 Rated current: 5.0A AC DC
 Withstand Voltage: 1000V AC/min
 Temperature Range: -25°C ~ +85°C
 Housing: LCP UL94V-0, BLACK
 Contacts: Brass/MATTE Sn-plated
 Solder Tabs: Brass/MATTE Sn-plate
 CAP: Stainless steel



Poles	Part NO.	Dimension (mm)	
		A	B
1*2	W-3001N02P-0000	3.0	9.65
1*3	W-3001N03P-A000	6.0	12.65
1*4	W-3001N04P-0000	9.0	15.65
1*5	W-3001N05P-A000	12.0	18.65
1*6	W-3001N06P-A000	15.0	21.65
1*7	W-3001N07P-A000	18.0	24.65
1*8	W-3001N08P-A000	21.0	27.65
1*9	W-3001N09P-A000	24.0	30.65
1*10	W-3001N10P-A000	27.0	33.65
1*11	W-3001N11P-A000	30.0	36.65
1*12	W-3001N12P-A000	33.0	39.65

TOLERANCE TABLE	
.0	±0.30
.00	±0.20
.000	±0.05

APPROVED:	DATE:	深圳市灿科盟实业有限公司 CHANKLEMENT INDUSTRYCO., LTD			
CHECKED:	DATE:	TITLE: MX3.0SMT-1*xP 立贴 无柱			
DRAWN: SXA	DATE: 2016-08-17	PART. NO. /		UNIT	SCALE
		mm	free		
		FILE NO.	Ckmtw-MX-00022	REV.	A