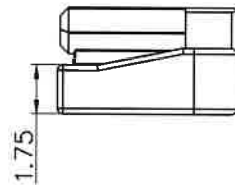
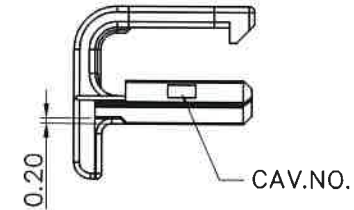
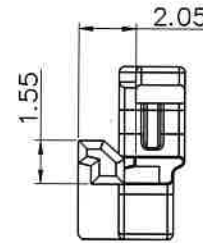
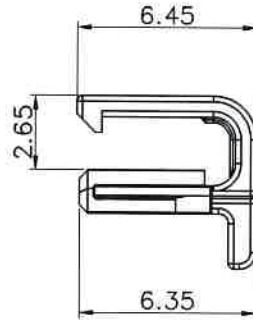
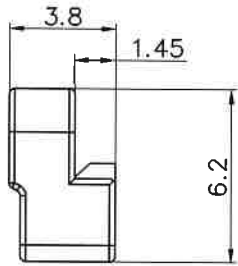
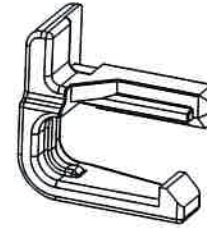
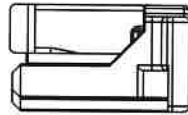


REV.	DESCRIPTION	DESIGN	APPROVAL	DATE
AO	New version			

广东济德精密电子有限公司  
**受控文件**  
 日期: 2021年10月18日



**NOTES:**

1. Material/材质:  
 Housing/主体: PBT,  
 Color/颜色: Gray/灰色
2. The surface of the product shall be free of excessive plastic, lack of plastic, mottle, etc  
 产品表面不能有多胶、缺胶、杂色等现象
3. Harmful material please follow RoHS  
 产品需符合RoHS标准.
4. Applicable housing/适配塑壳 961-021 X-027

X.± 0.15	X.*± 1*	 Guangdong JiDe Precision Electronics Co., Ltd <b>广东济德精密电子有限公司</b>			
.X± 0.10	.X*± 0.5*				
.XX± 0.05	.XX*± /				
.XXX± 0.02	.XXX*± /				
UNITS:	mm	TITLE: 2.0mm Pitch Female ISL	PART NO. 966-0215-027		
The information in this document is property of JIDC company and should not be copied or reproduced in any other way, without written permission.		APPD: <i>Jerry</i>	DWG NO: C-966-0215-027		
		CHKD: <i>Ray</i>			
		DRAW: <i>Colnse</i>			
			SCALE N/A	SHEET 1/1	REV. AO