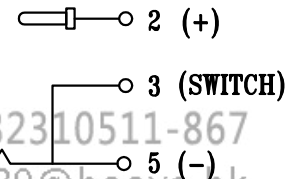
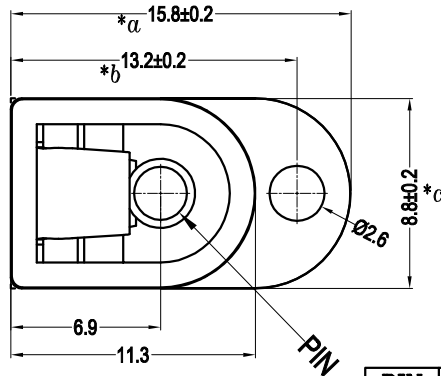


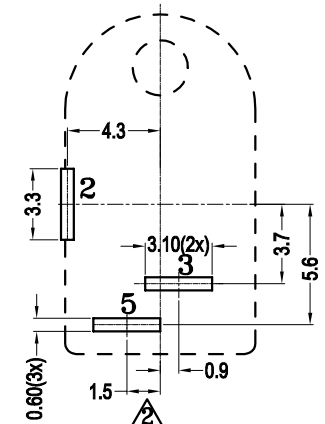
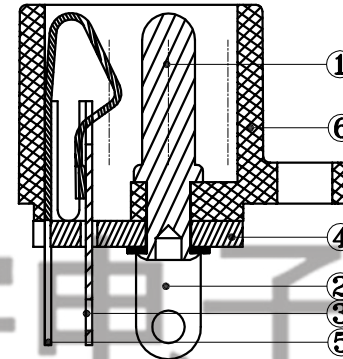
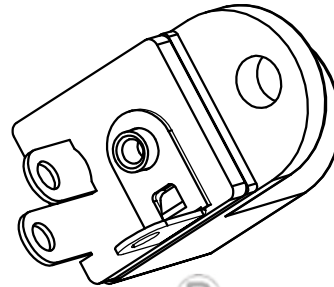
SCHEMATIC



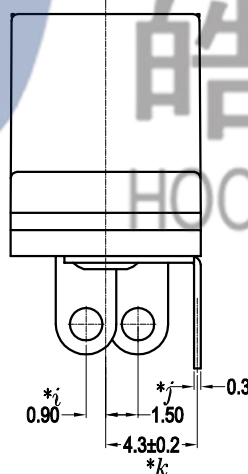
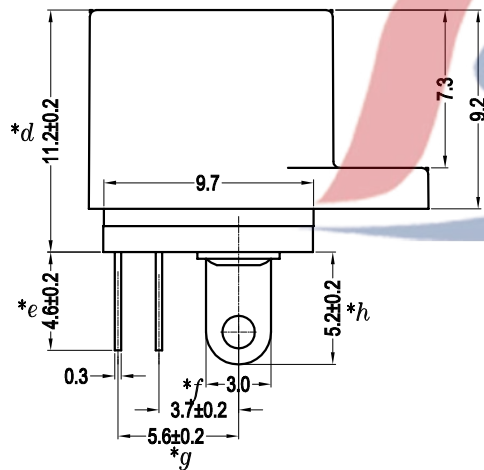
电话 : 0769-82310511-867
 邮箱 : hooya89@hooya.hk
 V : hooya89



PIN	Ø2.0	Ø2.5
APPD		



P.C.B LAYOUT TOP VIEW



Specification:

1. Rating : DC 20V 2.5A.
2. Contact resistance: $\leq 50\text{m}\Omega$. After test: $\leq 100\text{m}\Omega$.
3. Insulation resistance: $\geq 100\text{M}\Omega$ (500VDC). After test: $\geq 50\text{M}\Omega$.
4. Withstanding voltage: 500VAC.
5. Insertion and extraction force: 5N~30N.
6. life test: 5000cycles min.
7. Operation temperature range: $-20^{\circ}\text{C} \sim 70^{\circ}\text{C}$.

				TOLERANCE UNLESS SPECIFIED							
				UP TO 5mm: ±0.1	ANGULAR	A1	2020.09.18	修正PCB板孔位标识		GYW	
				ABOVE 5mm: ±0.2	±1°	AO	2019.05.07	首次发行		GYW	
						NO	DATE	REVISIONS		BY	APPD
6	DC016A CASE	PBT	1	Black & White	TITLE: DC JACK		UNIT : MM	ROHS COMPLIANT	DWN		
5	DC016 5# SPRING	C5210-H	1	Ag-Plated	MODEL: DC-016A 2.5-PU PCB板(HY)		SCALE: 1:1	CHK'D			
4	DC016 COVER PCB	PHENOLIC RESIN	1	Natural	HAOYU(HONGKONG)LIMITED 皓宇(香港)有限公司		APPD		PRO.AGL: REV :A1		
3	DC016 3# FLAT PIECE	C2680-H	1	Ag-Plated							
2	DC016 2# CONTACT FOOT	C2680-H	1	Ag-Plated							
1	DC016 PIN	C3602	1	Ni-Plated							
NO.	PART NAME	MATERIAL	QTY	FINISHING							