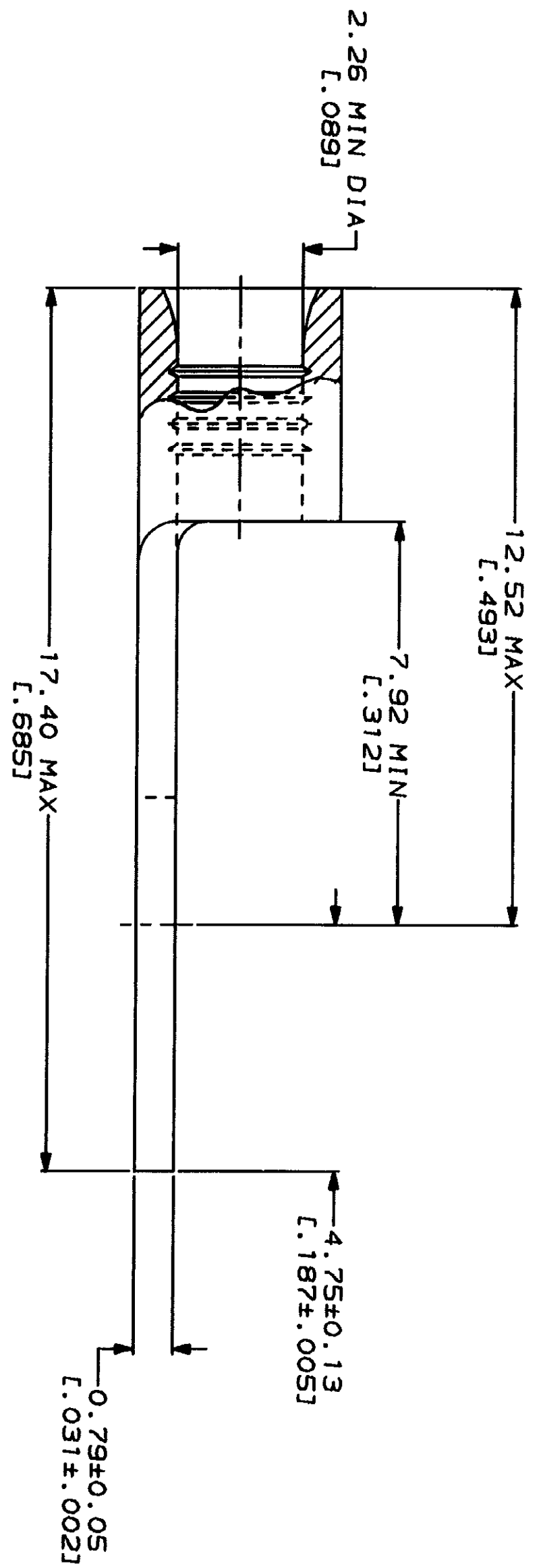
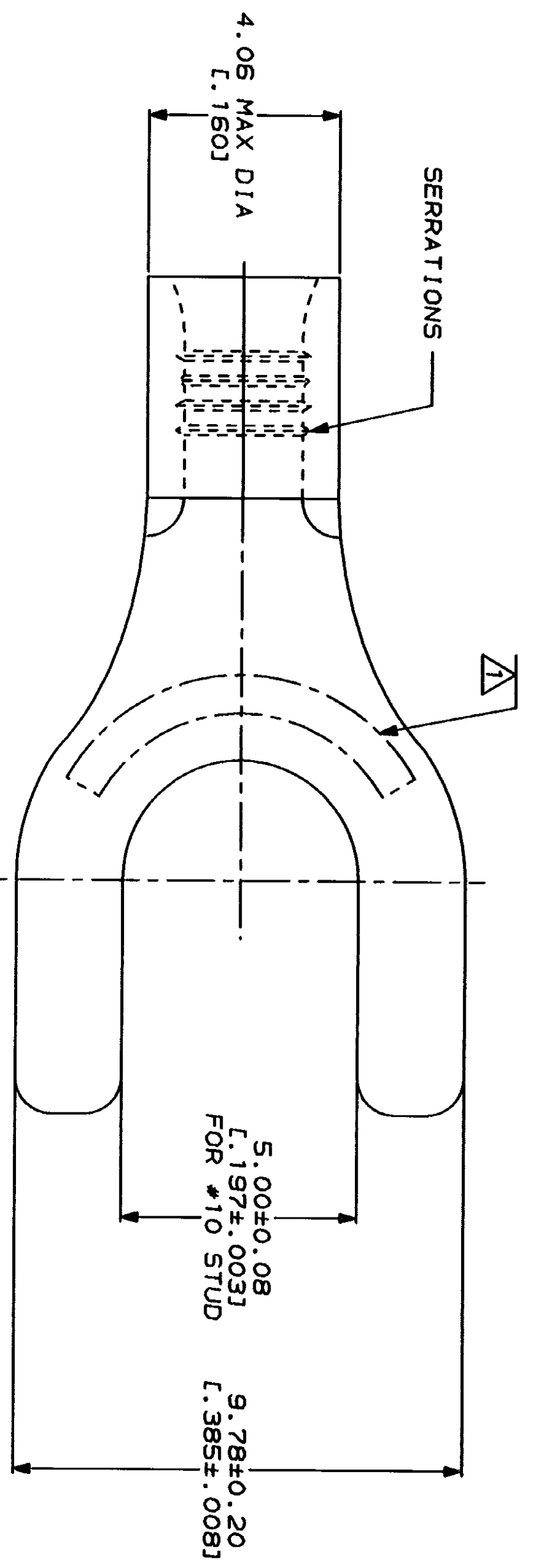


LOC	DIST	ZONE	LTR	DESCRIPTION	DATE	APPD
G	14			REVISED PER 0720-0230-93	2/25/94	DAW

METRIC
 DIMENSIONS LISTED IN mm [INCHES]

AMP WIRE RANGE 16-14 AWG STRANDED	UL E13288 Listed
AMP WIRE RANGE 16-14 AWG STRANDED	MILITARY P/N AND CLASS
NOT CERTIFIED	NOT APPLICABLE

△ STAMP AMP 16-14* APPROX AS SHOWN



AMP INCORPORATED
 CUSTOMER SERVICE SYSTEMS

FOR ADDITIONAL
 PRODUCT INFORMATION OR
 COPIES OF DRAWINGS
 AND TECHNICAL DOCUMENTS
 1-800-522-6752
 PRODUCT INFORMATION CENTER

FOR APPLICATION
 TOOLING INFORMATION
 1-800-722-1111
 TOOLING ASSISTANCE CENTER

FOR ORDER ENTRY
 1-800-526-5142

MAX RECOMMENDED OPERATING
 TEMPERATURE:
 170°C MAX

VOLTAGE RATING:
 NOT APPLICABLE

WIRE CROSS SECTIONAL AREA RANGE:
 1.04-2.62mm² [2,050-5,180] CIR MILS
 STRANDED

THIS DRAWING IS A CONTROLLED DOCUMENT FOR
 AMP INCORPORATED. IT IS SUBJECT TO CHANGE
 WITHOUT NOTICE. THE LATEST REVISION
 SHOULD BE CONTACTED FOR THE LATEST REVISION.

DO NOT SCALE PRINT.
 UNLESS SPECIFIED
 DIMENSIONS IN INCHES
 TOLERANCES ON:
 2 PLG DEC ±
 3 PLG DEC ±
 ANGLES ±

MATERIAL:
 COPPER PER
 ASTM B-152
 ANNEALED

FINISH:
 TIN PLATE
 0.00254 [0.000100] MIN
 THK PER MIL-T-10727

DR 2-17-93 TA BRINKMAN	NAME
CHK 2-17-93 DA PATTERSON	AMP Incorporated Harrisburg, PA 17105-3508
APPD 2-17-93 DE MILLER	TERMINAL, SPADE TONGUE, BUDGET
APPD 2-17-93 JL HECKLEY	
PRODUCT SPEC	
APPLICATION SPEC	
WEIGHT	

SCALE 10:1	CAGE CODE 00779	DRAWING NO G-31706
		SHEET 1 OF 1

CUSTOMER DRAWING