

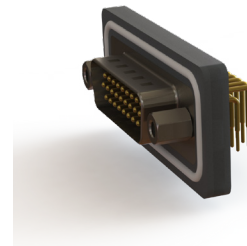
# 633W/634W SERIES



## Waterproof HD D-Sub Connectors: Right Angle PCB Mount

### Features:

- High density waterproof D-Sub
- 0.090" (2.29mm) contact spacing x 0.078" (1.98mm) row spacing
- Plug and receptacle in 15, 26 or 44 contact sizes
- Pin and socket contact mating design with right angle P.C. tail termination
- Plug shell indents provide grounding and additional mating retention
- Mounting options for panel mount or connector mating include threaded inserts or threaded standoffs
- D-shaped connector mating outline provides polarization
- Degree of protection: IP67 as per IEC60529



### Specifications:

Insulator Material	PBT Thermoplastic with 30% Glass Filled, UL 94V-0 Rated, Black color
Contact Material	Pins and Sockets: Copper Alloy
Contact Plating	Gold Plating over Nickel underplating
Shell Material	Nickel Plated Steel
Epoxy Sealant	Epoxy
O-Ring	Silicone
Current Rating	3 amps Per Contact
Contact Resistance	10 Milliohms maximum
Dielectric Withstanding Voltage	5000 megaohms minimum
Insulation Resistance	1000 V AC rms at Sea Level
Operating Temperature	-25°C To +85°C

### Ordering Code:

## 633-W15-262-012

**SERIES:**  
 PLUG, RIGHT ANGLE, 9.7 [0.383] . . . . 633  
 RECEPTACLE, RIGHT ANGLE, 9.7 [0.383] . . . . 634

**EDAC CODE:**  
 WATERPROOF . . . . W

**NO. OF CONTACTS:**  
 15 CONTACT PINS . . . . 15  
 26 CONTACT PINS . . . . 26  
 44 CONTACT PINS . . . . 44

**CONTACT PLATING:**  
 GOLD FLASH OVER NICKEL . . . . 2  
 15µ" GOLD OVER NICKEL . . . . 3  
 30µ" GOLD OVER NICKEL . . . . 6

**MOUNTING OPTION:**  
 2 . . . . #4-40 UNC THREADED HOLE

**NOTE:** ALL CONNECTORS ARE SHIPPED WITH  
 #4-40 UNC HEXAGON SCREWS  
 (Packed Separately)

**SHELL OPTIONS:**  
 1 . . . . NICKEL PLATED

**INSULATOR COLOR:**  
 0 . . . . BLACK

**CONTACT CODE:**  
 62 . . . . RIGHT ANGLE PC TAIL