

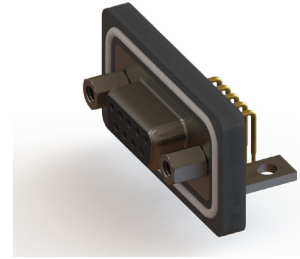
# 629W/630W SERIES



## Waterproof D-Sub Connectors: Right Angle

### Features:

- 0.109"(2.77mm) contact spacing x 0.112"(2.82mm) row spacing
- Plug and receptacle in 9, 15, or 25 contact sizes
- Pin and socket contact mating design with right angle P.C. tail termination.
- Plug shell indents provide grounding and additional mating retention
- Grounding features include two prong boardlock for exceptional retention to P.C. board
- Mounting options for panel mount or connector mating include threaded inserts or threaded standoffs
- D-shaped connector mating outline provides polarization
- Degree of protection: IP67 as per IEC60529



### Specifications:

Insulator Material	PBT Thermoplastic with 30% Glass Filled, UL 94V-0 Rated, Black color
Contact Material	Pins and Sockets: Copper Alloy
Contact Plating	Gold Plating over Nickel underplating
Shell Material	Nickel Plated Steel
Epoxy Sealant	Epoxy
O-Ring	Silicone
Current Rating	5 amps
Contact Resistance	10 Milliohms maximum
Dielectric Withstanding Voltage	5000 megaohms minimum
Insulation Resistance	1000 V AC rms at Sea Level
Operating Temperature	-25°C To +85°C

### Ordering Code:

## 629-W09-240-015

**SERIES:**  
 PLUG, 10.3 [0.406], FOOTPRINT . . . 629  
 RECEPTACLE, 10.3 [0.406] FOOTPRINT . . . 630

**EDAC CODE:**  
 WATERPROOF . . . W

**NO. OF CONTACTS:**  
 9 CONTACT PINS . . . 09  
 15 CONTACT PINS . . . 15  
 25 CONTACT PINS . . . 25

**CONTACT PLATING:**  
 GOLD FLASH OVER NICKEL . . . 2  
 15µ" GOLD OVER NICKEL . . . 3  
 30µ" GOLD OVER NICKEL . . . 6

**MOUNTING OPTION:**  
 2 . . . #4-40 UNC THREADED HOLE  
 5 . . . BRACKET #4-40 UNC WITHOUT BOARDLOCKS

**NOTE:** ALL CONNECTORS ARE SHIPPED WITH  
 #4-40 UNC HEXAGON SCREWS  
 (PACKED SEPARATELY)

**SHELL OPTIONS:**  
 1 . . . NICKEL PLATED

**INSULATOR COLOR:**  
 0 . . . BLACK

**CONTACT CODE:**  
 40 . . . RIGHT ANGLE TAIL,  
 10.3 [0.405] FOOTPRINT (9.4 NODE)