

## D-Sub Connectors: Right Angle, 0.197" (5.00mm) Footprint

### Features:

- Two contact rows with 0.197"(5.00mm) footprint, right angle bend
- 0.109"(2.77mm) contact spacing X 0.112"(2.84mm) row spacing
- Plug and receptacle in 9, 15, or 25 contact sizes
- Pin and socket contact mating design with P.C. tail termination
- Metal shell provides EMI/RFI shielding, plug shell indents provide grounding and additional mating retention
- Board mounting features include two prong boardlock for exceptional retention to P.C. board
- Flange mounting options for panel mount or connector mating include through hole, threaded hole and threaded standoffs
- D-shaped connector mating outline provides polarization
- Design based on requirements of MIL-C-24038, EIA RS-232 and RS-449



### Specifications:

Insulator Material	Thermoplastic Polyester, UL 94V-0, Chemical Resistant, Color: Black
Contact Material	Plug (Pins): Copper Alloy Receptacle (Socket): Copper Alloy
Contact Plating	Selective Gold (See Ordering Code) over Nickel for the Mating Area, Tin Plating for Tail Area
Shell Material	Nickel Plated Steel
Current Rating	3 amps
Contact Resistance	25 Milliohms maximum
Insulation Resistance	5000 megaohms minimum
Dielectric Withstanding Voltage	1000 V AC rms at Sea Level
Operating Temperature	-55°C To +85°C (upto +125°C for high temp)
Insertion Force	16 oz (4.45 N) Maximum Per Contact Position
Withdrawal Force	1 oz (0.28 N) Minimum Per Contact Position

### Ordering Code:

**623-025-261-033**

SERIES: \_\_\_\_\_  
 623: PLUG (PIN)  
 624: RECEPTACLE (SOCKET)

NO. OF CONTACTS: \_\_\_\_\_  
 009 - 9 CONTACTS  
 015 - 15 CONTACTS  
 025 - 25 CONTACTS

CONTACT FINISH CODE: \_\_\_\_\_  
 2 - GOLD FLASH PLATING  
 3 - 15 MICROINCHES OF GOLD PLATING  
 6 - 30 MICROINCHES OF GOLD PLATING

CONTACT CODE: \_\_\_\_\_  
 61 - .197" FOOTPRINT CONTACT

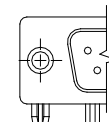
FLANGE MOUNTING OPTIONS:  
 1 - DIA .120"(DIA 3.05MM) THROUGH HOLE  
 2 - #4-40 THREADED HOLE  
 3 - #4-40 THREADED STANDOFF  
 5 - M3 THREADED HOLE

BOARD MOUNTING FEATURE:  
 3 - TWO PRONG BOARDLOCKS

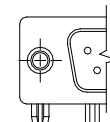
INSULATOR MATERIAL CODE:  
 0 - STANDARD  
 5 - HIGH TEMP INSULATOR

### FLANGE MOUNTING OPTIONS

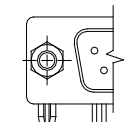
THROUGH HOLE



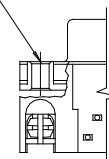
THREADED HOLE



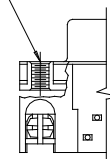
THREADED STANDOFF



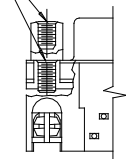
3.05 DIA. THROUGH HOLE



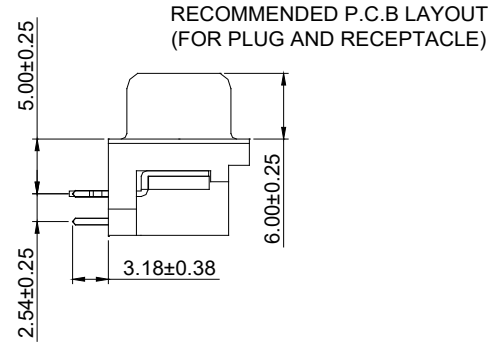
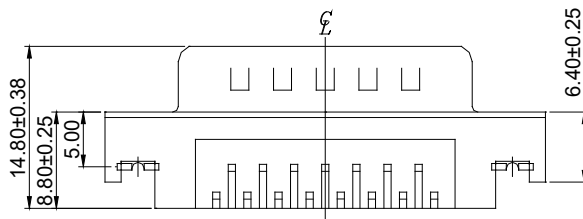
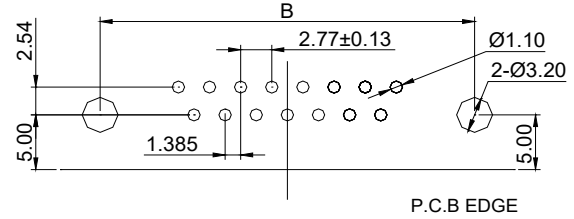
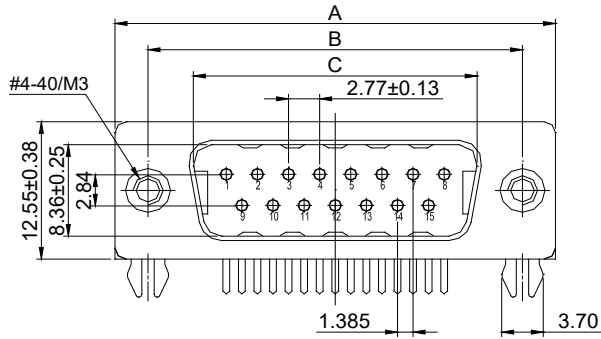
#4-40 OR M3 THREAD



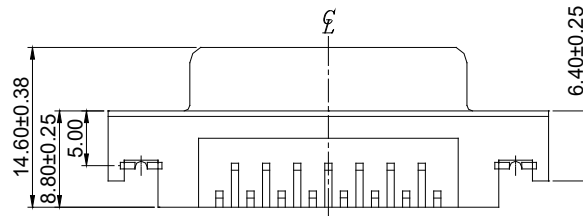
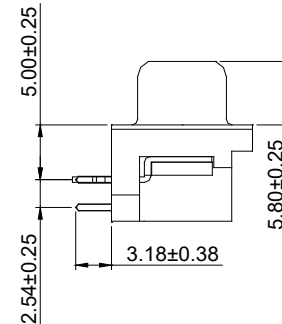
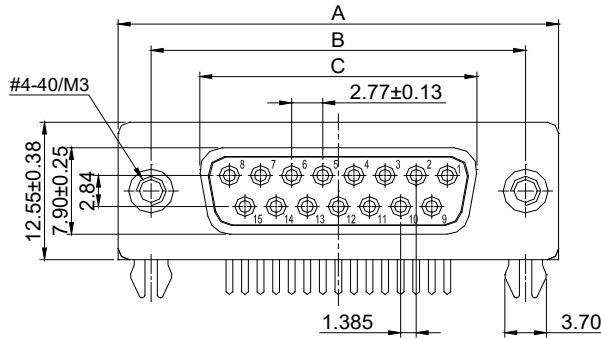
#4-40



### PLUG 623 SERIES



### RECEPTACLE 624 SERIES



NUMBER OF CONTACTS	A±0.38		B±0.25		C±0.25 PLUG		C±0.13 RECEPTACLE	
	Inch	(mm)	Inch	(mm)	Inch	(mm)	Inch	(mm)
9	1.213	(30.81)	.984	(24.99)	.666	(16.92)	.643	(16.33)
15	1.543	(39.19)	1.312	(33.32)	.994	(25.25)	.971	(24.66)
25	2.088	(53.04)	1.852	(47.04)	1.534	(38.96)	1.511	(38.38)