




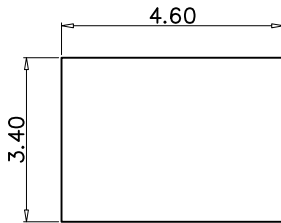


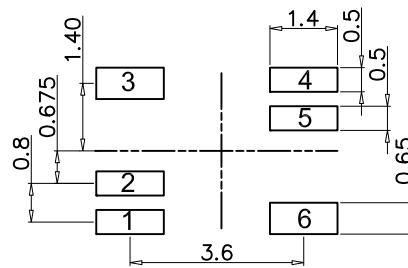
-  Meets IEEE 802.3at Standards.
-  Designed For 1.0G BASE-T Applications, Surface Mount Type.
-  Operating Temperature Range: -40°C to +85°C.
-  RoHS Compliant.
-  720mA Current Capability.

Part Number	Electrical Specifications @25°C						
	Turns Ratio (±5%)	OCL(uH Min) @100KHz,0.1V With 10.8mA DC Bias	CWW(pF Max) @100KHz,0.1V	DCR (Ω Max)	Insertion Loss (dB Max)	Return Loss (dB Min)	HI-POT (Vrms)
GA021G00	1CT:1CT	120	35	1.2	-1.0@1-100MHz	-18@0.5-40MHz -12+10*Log(F/80)@40-100MHz	1500

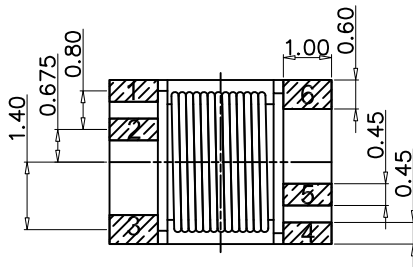
MECHANICAL



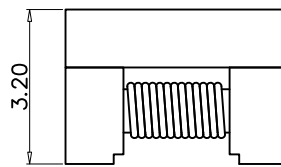
TOP VIEW



SUGGEST LAYOUT



BOTTOM VIEW



FRONT VIEW

Unless otherwise specified all tolerances are: ±0.25 in mm

SCHEMATICS

