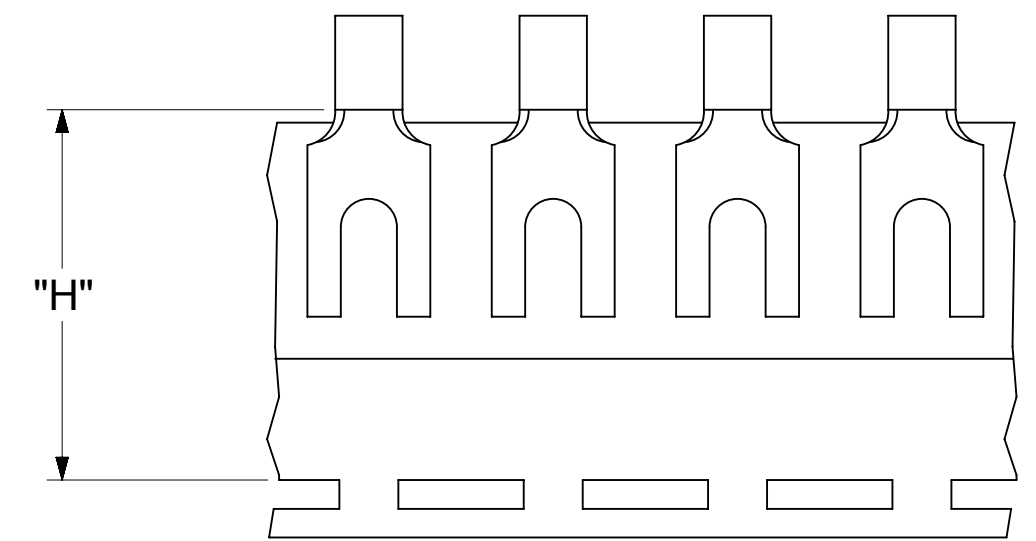
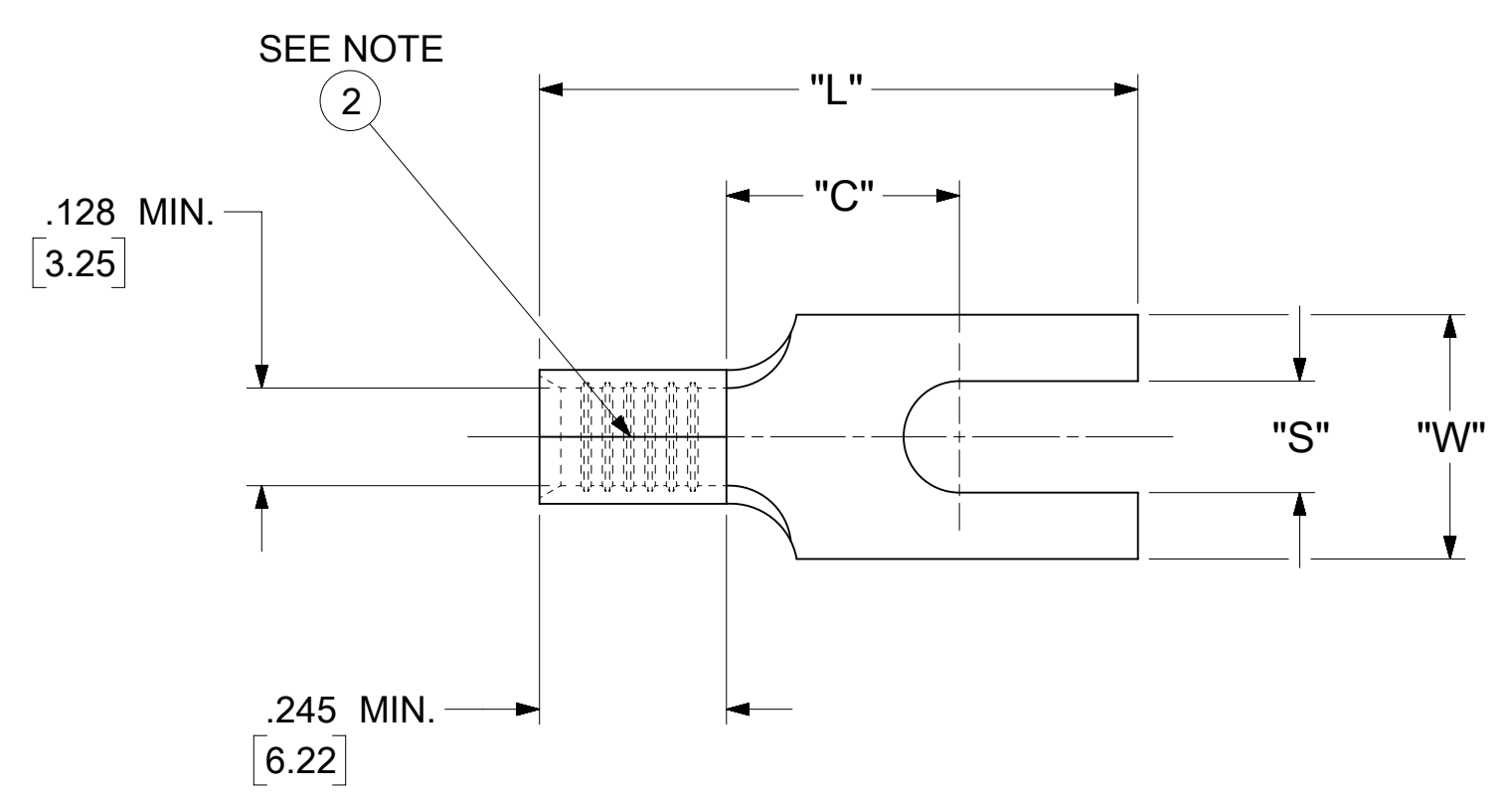


LOOSE PIECE		TAPE MOUNTED		SPECIFICATIONS					
MATERIAL NUMBER	ENGINEERING NUMBER	MATERIAL NUMBER	ENGINEERING NUMBER	STUD SIZE	"S" ±.005 [0.13]	"W" ±.010 [0.25]	"C" MIN.	"L" MAX.	"H"
191290008	C-1105-06	191410080	C-1105-06T	6	.146 [3.71]	.320 [8.13]	.305 [7.75]	.784 [191.91]	.980 [24.89]
191290007	C-1105-08	---	---	8	.173 [4.39]				
191290005	C-1105-10	---	---	10	.198 [5.03]				



PARTS ON TAPE

- NOTES:
- MATERIAL: COPPER (.040±.001 [1.02] THK.)
PLATING: ELECTRO-TIN (.0003 MIN).
 - BRAZED SEAM
 - WIRE SIZE: 12-10 AWG
4.0-6.0 MM²
 - "UL" LISTING #E32244
"CSA" LISTING #18689
 - ALL DIMENSIONS IN INCHES/[MM].
 - PARTS ARE ROHS COMPLIANT.
 - DIMS. SHOWN ARE FOR REFERENCE ONLY.

SYMBOLS ▽ = 0 ▽ = 0 ▽ = 0 ▽ = 0 ▽ = 0 ▽ = 0 ▽ = 0 ▽ = 0 ▽ = 0 ▽ = 0 ▽ = 0	THIS DRAWING CONTAINS INFORMATION THAT IS PROPRIETARY TO MOLEX ELECTRONIC TECHNOLOGIES, LLC AND SHOULD NOT BE USED WITHOUT WRITTEN PERMISSION			CURRENT REV DESC: MIGRATION TO ECTR/NX		
	DIMENSION UNITS		SCALE		GENERAL TOLERANCES (UNLESS SPECIFIED)	
	INCH/MM		NTS			
			MM	INCH		
4 PLACES ±		±		EC NO: 621658		
3 PLACES ±		± 0.005		DRWN: ABENJAMINLW 2019/07/26		
2 PLACES ±		0.13 ± 0.01		CHK'D: GROJAS01 2019/07/31		
1 PLACE ±		0.25 ±		APPR: JMACNEIL 2019/08/05		
0 PLACES ±		±		INITIAL REVISION:		
ANGULAR TOL ± 0.5 °				DRWN: JJ 1984/10/16		
DRAFT WHERE APPLICABLE MUST REMAIN WITHIN DIMENSIONS		THIRD ANGLE PROJECTION		APPR: JMACNEIL 2019/08/05		
		DRAWING		SERIES		
		C-SIZE		19129		

molex

SPADE TONGUE TERMINAL
KRIMPTITE 100-SERIES

PRODUCT CUSTOMER DRAWING

DOCUMENT NUMBER	DOC TYPE	DOC PART	REVISION
191290008	PSD	000	A

MATERIAL NUMBER	CUSTOMER	SHEET NUMBER
SEE TABLE	GENERAL MARKET	1 OF 1