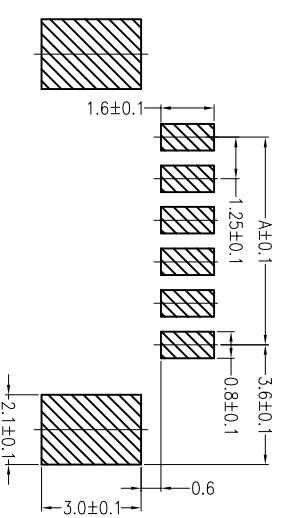
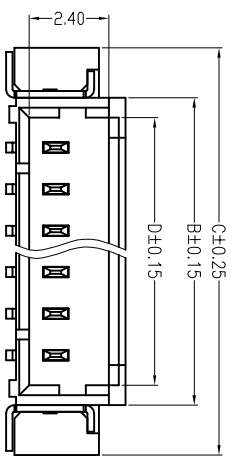
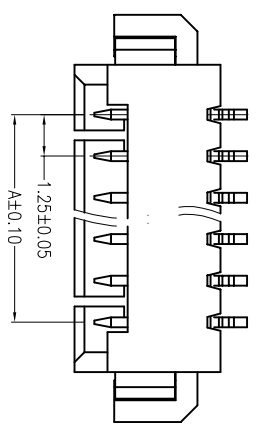
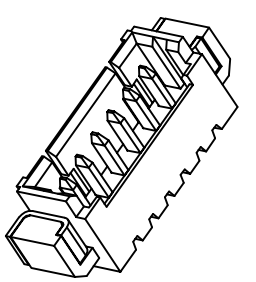
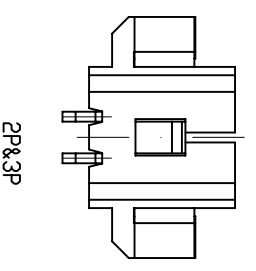
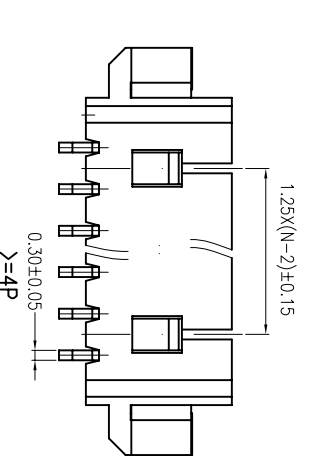
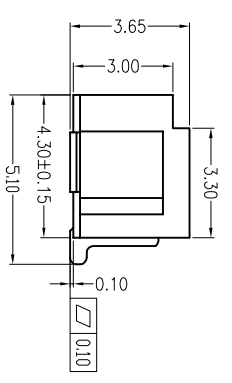


REV	LOCAS	DESCRIPTION	DRAW	DATE
A0	NEW	PERLIMINARY	Andy	2022.06.21



RECOMMENDED PCB LAYOUT
GENERAL TOLERANCE ±0.05



CKT	DimA	DimB	DimC	DimD
2	1.25	4.45	7.45	3.05
3	2.50	5.70	8.70	4.30
4	3.75	6.95	9.95	5.55
5	5.00	8.20	11.20	6.80
6	6.25	9.45	12.45	8.05
7	7.50	10.70	13.70	9.30
8	8.75	11.95	14.95	10.55
9	10.00	13.20	16.20	11.8
10	11.25	14.45	17.45	13.05
11	12.50	15.70	18.70	14.3
12	13.75	16.95	19.95	15.55
13	15.00	18.20	21.20	16.80
14	16.25	19.45	22.45	18.05
15	17.50	20.70	23.70	19.3
16	18.75	21.95	24.95	20.55

Ordering Information

P:Pin Header Series
A:Finished Product
No. of PINS
Plating Number
12.鍍錫
01.鍍金G/F

P A XX XX 125 365-333-XX S M S

S:SMT TYPE
D:DIP TYPE
F:Female(排針)
M:Male(排母)
S:Single(單排)
D:Double(雙排)

XX:Colour
01:Nature (本色)
02:Black (黑色)
03:Blue (藍色)

125:Pitch 1.25mm
365:Height 3.65mm
Running number



Dongguan D-CHAIN Precision Components Co.,Ltd

MEASURE POINT: (M)
QUADRANT POINT (Q)
TANGENCY POINT (T)
INTERSECTION POINT (I)

UNLESS OTHERWISE SPECIFIED, TOLERANCE:
X. ±0.25
XX ±0.20
XXX ±0.15
ANGULAR ±5°

DRAWN	Andy	DATE	2022.06.21	TITLE:
CHECKED		DATE		1.25Pitch Wafer SMT TYPE 90°
APPROVED		DATE		
PART No.	PAXXXX125365-333-XXSMS	REV:	A0	SCALE: 1:1
DRAWING No.		SIZE:	A4	SHEET: 1/1

- NOTE:**
- 1. MATERIAL:**
1.1 HOUSING: LCP, UL94V-0,
1.2 CONTACT: C2680
1.3 PEG: C2680
- 2. FINISH:**
2.1 CONTACT: Plating Tin Over Nickel
2.2 PEG: Plating Tin Over Nickel
- 3. PERFORMANCE CHARACTERISTICS:**
3.1 CURRENT RATING: 1.0 A
3.2 VOLTAGE RATING: 50 VAC
3.3 CONTACT RESISTANCE: 40mΩ MAX
3.4 INSULATION RESISTANCE: 100MΩ MIN
3.5 OPERATING TEMPERATURE: -25°C TO 85°C