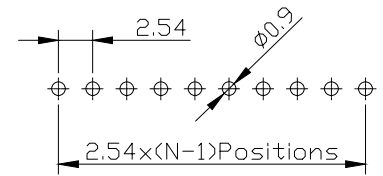


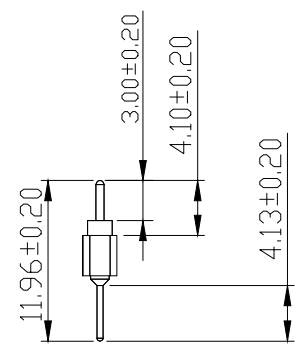
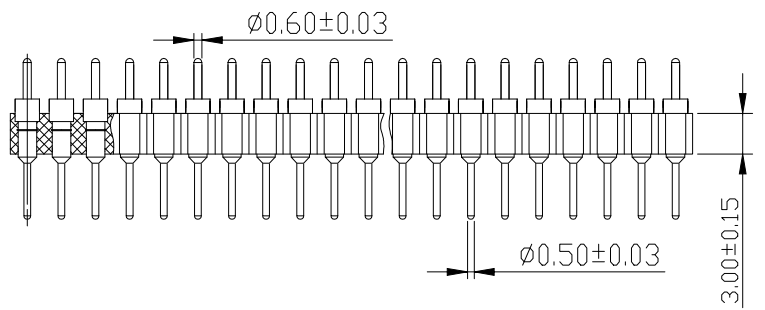
Recommended P.C.B Layout(Top Side)
(PCB BOARD TOLERANCE±0.05)



Materials
Pin: Brass,machined,(H59-3)
Plating:Gold plated: 1.25u"m/50u"nickel,full gold
Insulator body(black): PPS(UL94V-0)

Electrical
Current rating: 3 Amps/contact max.
Contact resistance:20mΩ
Insulation resistance:1000MΩ
Operating voltage:60 AC/DC

Mechanical
Operating temperature :Gold plated:-55C to +105C
(Continuous) -67"H to +105"H
Tin plated:-40°C to +105°C
Soldering temperature:260°C,10s max



Ordering Information

PZ 254 - * - N - Z - ** - C

No.of Rows 1=Single Row 2=Dual Row	No.of Pins 2-40Pin	Type 2-直排 4-弯排 8-弯排	Contact Plating G0:Gold Flash G1:1u" Gold G2:3u" Gold G3:5u" Gold G4:10u" Gold G5:15u" Gold G6:30u" Gold S0:Gold Flash/Tin S1:Tin	Round Pin (圆针)
--	-----------------------	------------------------------	--	-------------------

			GENERAL TOLERANCE		制 图 DRAWING		深圳市华灿天禄电子有限公司 ShenzhenhuacantianluELECTRONICS CO.,LTD				
			DIM	TOL	审 核 CHECK						
			X.X	±0.30	批 准 APPROVAL		产品名称 TITLE		2.54 单排 直排针 塑高3.0 (上针0.6 下针0.5)		
			X.XX	±0.20	比 例 SCALE		产品料号 PART NO.		版本 REV.		
			X.XXX	±0.10	投 影 Projection		PZ254-1-N-Z-XX-C		A		
序号 No.	变更内容 MODIFY CONTENT	日期 MODIFY DATE	Angle	±3.0°	材 料 MATERIAL		单 位 UNITS		页 次 SHEET		
								mm		1/1	