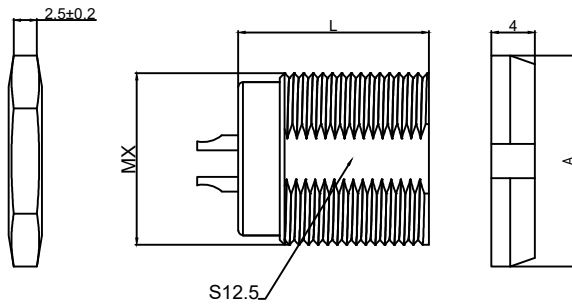


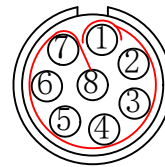
# 1.View and size(视图及尺寸)

| Main technical indicators(主要技术指标) |  |
|-----------------------------------|--|
| 1.Mating (插拔次数)                   | >3000  |
| 2.Working Temperature (温度)        | -20~+120 °C  |
| 3.IP Rating (防护级别)                | IP50   |
| 5.盐雾                              | 5% NaCl for 48 hours/5%NaCl雾气中 48小时  |
| 7.Diameter of socket end(插合端直径)   | φ0.7   |
| 8.Testing Voltage (测试电压)          | 1050V  |
| 9.Working Voltage (工作电压)          | 600V   |
| 10.Rated Current (额定电流)           | 5A   |
| 11.Shell material(壳体材质)           | PC/PSUshell and chuck nut/pin sleeve and middleware/聚碳酸酯/聚砜外壳和夹头螺母/插销套和中间件 |
| 12.Pin Material(插针材料)             | Copper alloy gold plating(铜合金镀金)   |
| 13.Insulator material(绝缘体材质)      | L:PPS,P:PEEEK  |
| 14.Nut color(螺帽颜色)                | G=灰色/J=黄色/A=蓝色/N=黑色/R=红色/V=绿色/B=白色   |

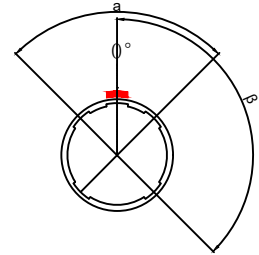


|    | A    | L    | MX    | S1   |
|----|------|------|-------|------|
| MM | 18.5 | 20.3 | M14X1 | 12.5 |
| in | 0.73 | 0.80 | M14X1 | 0.49 |

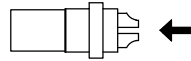
| Sum up(总结)                  |   |
|-----------------------------|---|
| Series(系列)                  | 0M  |
| Shell style/model (外壳样式/型号) | LZAG: Straight plug, cable collet and nut for fitting a bend relief直塞、电缆夹头和螺母, 用于安装弯曲凸起 |
| Button (按键)                 | A button(一个按键)  |
| Termination type (终止类型)     | Male solder(公焊锡)  |
| Line diameter awg(线材直径)     | 26AWG-0.0AWG  |
| Cable diameterφ (电缆直径)      | φ6.1-φ6.5MM   |
| Matching parts(配件)          | PLG.M0.8GL.LX   |



Welded surface (焊接面)



Positive view (正视图)



(Welded mother adhesive core) 焊接型母胶芯

| Location pin combination(定位销组合) |                                   |           |                     |
|---------------------------------|-----------------------------------|-----------|---------------------|
| (编号) Number                     | Number of positioning pins(定位销数量) | Angle(角度) | Series(系列)-0M       |
| G                               | One(1)                            |           | (Zero degrees)0°    |
| A                               | Two(2)                            | a         | Thirty degrees(40°) |
| B                               | Two(2)                            |           | Sixty degrees(60°)  |
| C                               | Two(2)                            |           | Ninety degrees(80°) |
| H                               | Two(2)                            | β         | 135 degrees(170°)   |
| J                               | Two(2)                            |           | 145 degrees(205°)   |

LZA G. M0 8.G L A R

Model(型号)

Alignment pins(定位销)

series(系列)

Needle core configuration(针芯配置)

Outer casing(外壳材料)

Insulator material(绝缘体材料)

Insulator(绝缘体)

Nut color(螺帽颜色)

|                                  |          |                                      |          |                                      |
|----------------------------------|----------|--------------------------------------|----------|--------------------------------------|
| DESIGNED(设计)                     | DATE(日期) | SCALE(比例)                            | N/A(不适用) | MODEL TYPE                           |
| CHECKED(校对)                      | DATE(日期) | VIEW(视图)                             |          | 型号类型: LZAG. M08.GLAR                 |
| APPROVED(审核)                     | DATE(日期) | UNIT(单位)                             | MM       | PART NO. 0M8-core plug<br>名称: 0M8芯插座 |
| REVISIONS                        |          | MATERIAL (材料)                        |          | DWG NO.:                             |
| www.helloxkb.com www.helloxkb.cn |          | XKB INDUSTRIAL PRECISION CO.,LIMITED |          | WEIGHT(重量) SHEET(表) REVISION(修订)     |
|                                  |          |                                      |          | 1/1 A0                               |