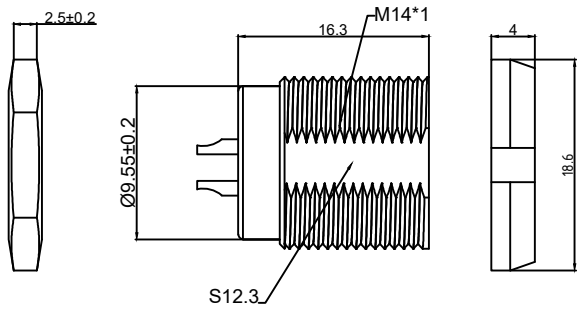


1.View and size(视图及尺寸)

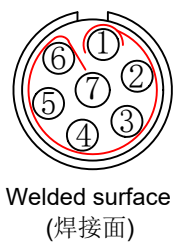
Main technical indicators(主要技术指标)	
1.Mating (插拔次数)	>3000
2.Working Temperature (温度)	-20~+120 ℃
3.IP Rating (防护级别)	IP50
5.盐雾	5% NaCl for 48 hours/5%NaCl雾气中 48小时
7.Diameter of socket end(插合端直径)	φ0.7
8.Testing Voltage (测试电压)	1050V
9.Working Voltage (工作电压)	850V
10.Rated Current (额定电流)	5A
11.Shell material(壳体材质)	PC/PSUshell and chuck nut/pin sleeve and middleware/聚碳酸酯/聚砜外壳和夹头螺母/插销套和中间件
12.Pin Material(插针材料)	Copper alloy gold plating(铜合金镀金)
13.Insulator material(绝缘体材质)	L:PPS,P:PEEEK
14.Nut color(螺帽颜色)	G=灰色/J=黄色/A=蓝色/N=黑色/R=红色/V=绿色/B=白色

Sum up(总结)	
Series(系列)	0M
Shell style/model (外壳样式/型号)	LZAG: Straight plug, cable collet and nut for fitting a bend relief直塞、电缆夹头和螺母, 用于安装弯曲凸起
Button (按键)	A button(一个按键)
Termination type (终止类型)	Male solder(公焊锡)
Line diameter awg(线材直径)	26AWG-0.0AWG
Cable diameterφ (电缆直径)	φ6.1-φ6.5MM
Matching parts(配件)	PLG.M0.7GL.LX

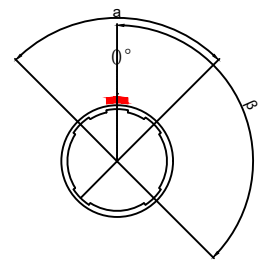
Location pin combination(定位销组合)			
(编号) Number	Number of positioning pins(定位销数量)	Angle(角度)	Series(系列)-0M
G	One(1)		(Zero degrees)0°
A	Two(2)	a	Thirty degrees(40°)
B	Two(2)		Sixty degrees(60°)
C	Two(2)		Ninety degrees(80°)
H	Two(2)	β	135 degrees(170°)
J	Two(2)		145 degrees(205°)



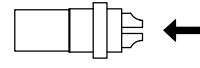
	A	L	M
MM	14	45.0	30
in	0.55	1.77	1.18



Welded surface (焊接面)



Positive view (正视图)



(Welded mother adhesive core) 焊接型母胶芯

LZA G. M0 7.G L A V

- Model(型号)
- Alignment pins(定位销)
- series(系列)
- Needle core configuration(针芯配置)
- Outer casing(外壳材料)
- Insulator material(绝缘体材料)
- Insulator(绝缘体)
- Nut color(螺帽颜色)

DESIGNED(设计)	DATE(日期)	SCALE(比例)	N/A(不适用)	MODEL TYPE
CHECKED(校对)	DATE(日期)	VIEW(视图)		型号类型: LZAG. M07.GLAV
APPROVED(审核)	DATE(日期)	UNIT(单位)	MM	PART NO. 0M7-core plug 名称: 0M7芯插头
REVISIONS		MATERIAL (材料)		DWG NO.:
www.helloxkb.com www.helloxkb.cn		XKB INDUSTRIAL PRECISION CO.,LIMITED		WEIGHT(重量) SHEET(表) REVISION(修订)
				1/1 A0