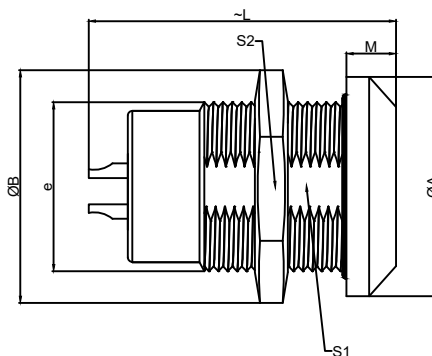
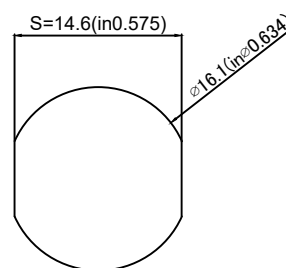


# 1.View and size(视图及尺寸)

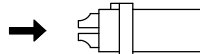
Main technical indicators(主要技术指标)	
1.Mating (插拔次数)	> 3000
2.Working Temperature (温度)	-55~+150 °C
3.IP Rating (防护级别)	IP66/IP68
4. 振动	10z 2000z, acceleration 147m / S2, instantaneous break ≤ 1US/10z2000z加速度 147m/S2, 瞬断≤1Us
5. 盐雾	5% NaCl for 48 hours/5%NaCl雾气中 48小时
6. 冲击	980m / S2, instantaneous ≤ 1 US, insulation resistance: > 3000 Ω (normal state)/980m/S2,,瞬间 ≤1 Us 绝缘电阻: > 3000 Ω (常态)
7.Diameter of socket end(插合端直径)	∅0.5
8.Testing Voltage (测试电压)	900V
9.Working Voltage (工作电压)	1500V
10.Rated Current (额定电流)	2.5A
11.Shell material(壳体材质)	Brass (chromium plating) shell and chuck nut/( nickel plating) pin sleeve and middleware/黄铜(镀铬)外壳和夹头螺母/(镀镍)插销套和中间件
12.Pin Material(插针材料)	Copper alloy gold plating(铜合金镀金)
13.Insulator material(绝缘体材质)	PPS



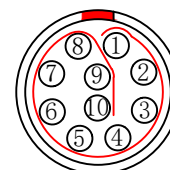
	A	B	L	M	E	S1	S2
MM	20	21.5	30.0	4.5	M16*1	14.5	19
in	0.79	0.85	1.18	0.18		0.57	0.75



Pane hole size (面板开孔尺寸)



(Welded mother adhesive core) 焊接型母胶芯



Welded surface (焊接面)

**LG G.1K.P10.C L L**

Model(型号)

Positioning pin(定位销)

Series(系列)

Needle core configuration(针芯配置)

Outer casing(外壳)

Insulator(绝缘体)

Needle core(针芯)

## Sum up(总结)

Series(系列)	K
Shell style/model (外壳样式/型号)	LGG: :Fixed receptacle, nut fixing/固定插座, 螺母固定
Button (按键)	A button(一个按键)
Termination type (终止类型)	Mother solder tin(母焊锡)
Line diameter awg(线材直径)	34-28AWG
Cable diameter∅ (电缆直径)	0-0
Matching parts(配件)	TGG.1K.P10.CLAC45H

	A	B	C√	ANGLE	
5-10	±0.02	±0.05	±0.1	0°-30°	±0.1°
50-100	±0.1	±0.15	±0.2	61°-90°	±0.5°
50-100	±0.15	±0.2	±0.25		
100-	±0.15%	±0.20%	±0.25%		

DESIGNED (设计)	DATE(日期)	SCALE(比例)	N/A(不适用)	MODEL TYPE
CHECKED (校对)	DATE(日期)	VIEW(视图)		型号类型: LGG.1K.P10.CLL
APPROVED (审核)	DATE(日期)	UNIT(单位)	MM	PART NO. 1K10-core socket
REVISIONS				DWG NO.:
www.helloxkb.com www.helloxkb.cn		MATERIAL (材料)		名称: 1K10芯插座
XKB INDUSTRIAL PRECISION CO.,LIMITED			WEIGHT(重量)	SHEET(表)
			1/1	REVISION(修订)
				A0