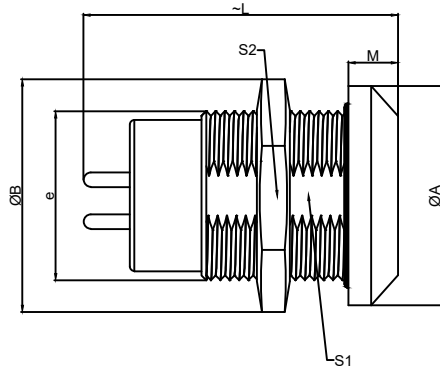


# 1.View and size(视图及尺寸)

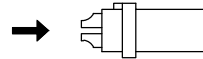
| Main technical indicators(主要技术指标) |   |
|-----------------------------------|---|
| 1.Mating (插拔次数)                   | > 3000  |
| 2.Working Temperature (温度)        | -55~+150 °C   |
| 3.IP Rating (防护级别)                | IP66/IP68   |
| 4. 振动                             | 10z 2000z, acceleration 147m / S2, instantaneous break ≤ 1US/10z2000z加速度 147m/S2, 瞬断≤1Us                              |
| 5. 盐雾                             | 5% NaCl for 48 hours/5%NaCl雾气中 48小时   |
| 6. 冲击                             | 980m / S2, instantaneous ≤ 1 US, insulation resistance: > 3000 Ω (normal state)/980m/S2,,瞬间 ≤1 Us 绝缘电阻: > 3000 Ω (常态) |
| 7.Diameter of socket end(插合端直径)   | φ0.7  |
| 8.Testing Voltage (测试电压)          | 950V  |
| 9.Working Voltage (工作电压)          | 1050V   |
| 10.Rated Current (额定电流)           | 7A  |
| 11.Shell material(壳体材质)           | Brass (chromium plating) shell and chuck nut/( nickel plating) pin sleeve and middleware/黄铜(镀铬)外壳和夹头螺母/(镀镍)插销套和中间件    |
| 12.Pin Material(插针材料)             | Copper alloy gold plating(铜合金镀金)  |
| 13.Insulator material(绝缘体材质)      | PPS   |

| Sum up(总结)                  |   |
|-----------------------------|---|
| Series(系列)                  | K   |
| Shell style/model (外壳样式/型号) | LGG: :Fixed receptacle, nut fixing/固定插座, 螺母固定 |
| Button (按键)                 | A button(一个按键)                                |
| Termination type (终止类型)     | Female print PCB(印刷PCB)                       |
| Line diameter awg(线材直径)     | 30-22AWG                                      |
| Cable diameterφ (电缆直径)      | 0-0   |
| Matching parts(配件)          | TGG.1K.P07.CLAC45H                            |

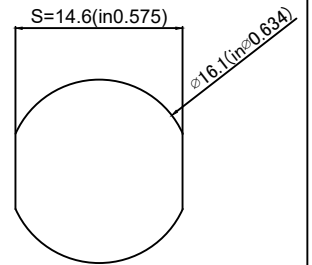
|        | A      | B      | C√     | ANGLE   |       |
|--------|--------|--------|--------|---------|-------|
| 5-10   | ±0.02  | ±0.05  | ±0.1   | 0°-30°  | ±0.1° |
| 50-100 | ±0.1   | ±0.15  | ±0.2   | 61°-90° | ±0.5° |
| 50-100 | ±0.15  | ±0.2   | ±0.25  |         |       |
| 100-   | ±0.15% | ±0.20% | ±0.25% |         |       |



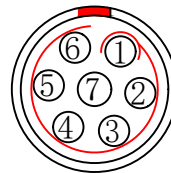
|    | A    | B    | L    | M    | E     | S1   | S2   |
|----|------|------|------|------|-------|------|------|
| MM | 20   | 21.5 | 30.0 | 4.5  | M16*1 | 14.5 | 19   |
| in | 0.79 | 0.85 | 1.18 | 0.18 |       | 0.57 | 0.75 |



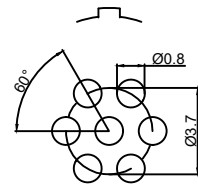
(Welded mother adhesive core)  
焊接型母胶芯



Pane hole size  
(面板开孔尺寸)



Welded surface  
(焊接面)



**LGG.1K.P07.C L N**

- Model(型号)
- Positioning pin(定位销)
- Series(系列)
- Needle core configuration(针芯配置)
- Outer casing(外壳)
- Insulator(绝缘体)
- Needle core(针芯)

|                                  |          |                                      |          |  |
|----------------------------------|----------|--------------------------------------|----------|--|
| DESIGNED (设计)                    | DATE(日期) | SCALE(比例)                            | N/A(不适用) | MODEL TYPE                             |
| CHECKED (校对)                     | DATE(日期) | VIEW(视图)                             |          | 型号类型: LGG.1K.P07.CLN                   |
| APPROVED (审核)                    | DATE(日期) | UNIT(单位)                             | MM       | PART NO. 1K7-core socket<br>名称: 1K7芯插座 |
| REVISIONS                        |          | MATERIAL (材料)                        |          | DWG NO.:                               |
| www.helloxkb.com www.helloxkb.cn |          | XKB INDUSTRIAL PRECISION CO.,LIMITED |          | WEIGHT(重量) SHEET(表) REVISION(修订)       |
|                                  |          |                                      |          | 1/1 A0                                 |