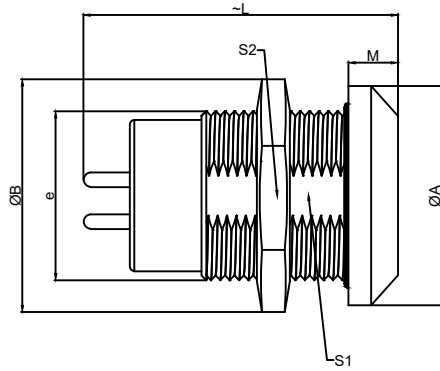


1.View and size(视图及尺寸)

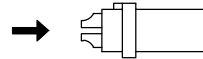
| Main technical indicators(主要技术指标) | |
|-----------------------------------|-----------------------------------------------------------------------------------------------------------------------|
| 1.Mating (插拔次数) | > 3000 |
| 2.Working Temperature (温度) | -55~+150 °C |
| 3.IP Rating (防护级别) | IP66/IP68 |
| 4. 振动 | 10z 2000z, acceleration 147m / S2, instantaneous break ≤ 1US/10z2000z加速度 147m/S2, 瞬断≤1Us |
| 5. 盐雾 | 5% NaCl for 48 hours/5%NaCl雾气中 48小时 |
| 6. 冲击 | 980m / S2, instantaneous ≤ 1 US, insulation resistance: > 3000 Ω (normal state)/980m/S2,,瞬间 ≤1 Us 绝缘电阻: > 3000 Ω (常态) |
| 7.Diameter of socket end(插合端直径) | φ1.3 |
| 8.Testing Voltage (测试电压) | 1500V |
| 9.Working Voltage (工作电压) | 1350V |
| 10.Rated Current (额定电流) | 15A |
| 11.Shell material(壳体材质) | Brass (chromium plating) shell and chuck nut/(nickel plating) pin sleeve and middleware/黄铜(镀铬)外壳和夹头螺母/(镀镍)插销套和中间件 |
| 12.Pin Material(插针材料) | Copper alloy gold plating(铜合金镀金) |
| 13.Insulator material(绝缘体材质) | PPS |

| Sum up(总结) | |
|-----------------------------|-----------------------------------------------|
| Series(系列) | K |
| Shell style/model (外壳样式/型号) | LGG: :Fixed receptacle, nut fixing/固定插座, 螺母固定 |
| Button (按键) | A button(一个按键) |
| Termination type (终止类型) | Female print PCB(印刷PCB) |
| Line diameter awg(线材直径) | 28-20AWG |
| Cable diameterφ (电缆直径) | 0-0 |
| Matching parts(配件) | TGG.1K.P02.CLAC45H |

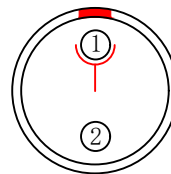
| | A | B | C√ | ANGLE | |
|--------|--------|--------|--------|---------|-------|
| 5-10 | ±0.02 | ±0.05 | ±0.1 | 0°-30° | ±0.1° |
| 50-100 | ±0.1 | ±0.15 | ±0.2 | 61°-90° | ±0.5° |
| 50-100 | ±0.15 | ±0.2 | ±0.25 | | |
| 100- | ±0.15% | ±0.20% | ±0.25% | | |



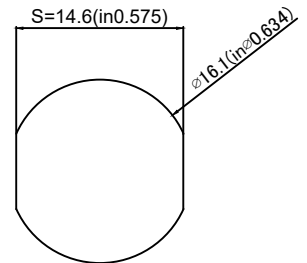
| | A | B | L | M | E | S1 | S2 |
|----|------|------|------|------|-------|------|------|
| MM | 20 | 21.5 | 30.0 | 4.5 | M16*1 | 14.5 | 19 |
| in | 0.79 | 0.85 | 1.18 | 0.18 | | 0.57 | 0.75 |



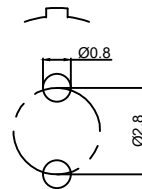
(Welded mother adhesive core)
焊接型母胶芯



Welded surface
(焊接面)



Pane hole size
(面板开孔尺寸)



LG G.1K.P02.C L N

- Model(型号)
- Positioning pin(定位销)
- Series(系列)
- Needle core configuration(针芯配置)
- Outer casing(外壳)
- Insulator(绝缘体)
- Needle core(针芯)

| | | | | |
|----------------------------------|----------|--------------------------------------|---------------|----------------------------------------|
| DESIGNED (设计) | DATE(日期) | SCALE(比例) | N/A(不适用) | MODEL TYPE |
| CHECKED (校对) | DATE(日期) | VIEW(视图) | | 型号类型: LGG.1K.P02.CLN |
| APPROVED (审核) | DATE(日期) | UNIT(单位) | MM | PART NO. 1K2-core socket 名称: 1K2芯插座 |
| REVISIONS | | | MATERIAL (材料) | DWG NO.: |
| www.helloxkb.com www.helloxkb.cn | | XKB INDUSTRIAL PRECISION CO.,LIMITED | | WEIGHT(重量) SHEET(表) REVISION(修订) |
| | | | | 1/1 A0 |