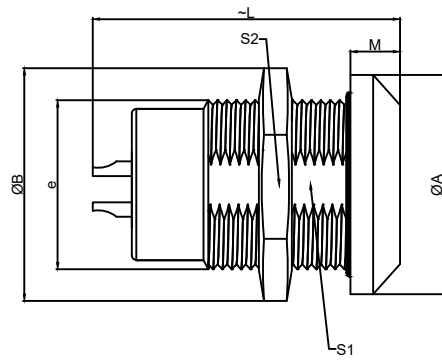
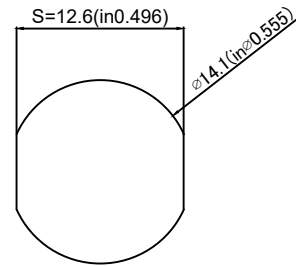


1.View and size(视图及尺寸)

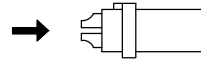
Main technical indicators(主要技术指标)	
1.Mating (插拔次数)	> 3000
2.Working Temperature (温度)	-55~+150 °C
3.IP Rating (防护级别)	IP66/IP68
4. 振动	10z 2000z, acceleration 147m / S2, instantaneous break ≤ 1US/10z2000z加速度 147m/S2, 瞬断≤1Us
5. 盐雾	5% NaCl for 48 hours/5%NaCl雾气中 48小时
6. 冲击	980m / S2, instantaneous ≤ 1 US, insulation resistance: > 3000 Ω (normal state)/980m/S2,,瞬间 ≤1 Us 绝缘电阻: > 3000 Ω (常态)
7.Diameter of socket end(插合端直径)	φ0.7
8.Testing Voltage (测试电压)	850V
9.Working Voltage (工作电压)	700V
10.Rated Current (额定电流)	7A
11.Shell material(壳体材质)	Brass (chromium plating) shell and chuck nut/(nickel plating) pin sleeve and middleware/黄铜(镀铬)外壳和夹头螺母/(镀镍)插销套和中间件
12.Pin Material(插针材料)	Copper alloy gold plating(铜合金镀金)
13.Insulator material(绝缘体材质)	PPS



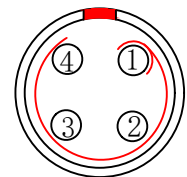
	A	B	L	M	E	S1	S2
MM	18	19.5	23.0	4.0	M14*1	12.5	17
in	0.71	0.77	0.91	0.16		0.49	0.67



Pane hole size (面板开孔尺寸)



(Welded mother adhesive core) 焊接型母胶芯



Welded surface (焊接面)

LG G.0K.P04.C L L

- Model(型号)
- Positioning pin(定位销)
- Series(系列)
- Needle core configuration(针芯配置)
- Outer casing(外壳)
- Insulator(绝缘体)
- Needle core(针芯)

Sum up(总结)	
Series(系列)	K
Shell style/model (外壳样式/型号)	LGG: :Fixed receptacle, nut fixing/固定插座, 螺母固定
Button (按键)	A button(一个按键)
Termination type (终止类型)	Mother solder tin(母焊锡)
Line diameter awg(线材直径)	30-22AWG
Cable diameterφ (电缆直径)	0-0
Matching parts(配件)	TGG.0K.P04.CLAC45H

	A	B	C√	ANGLE	
5-10	±0.02	±0.05	±0.1	0°-30°	±0.1°
50-100	±0.1	±0.15	±0.2	61°-90°	±0.5°
50-100	±0.15	±0.2	±0.25		
100-	±0.15%	±0.20%	±0.25%		

DESIGNED (设计)		DATE(日期)		SCALE(比例)	N/A(不适用)	MODEL TYPE
CHECKED (校对)		DATE(日期)		VIEW(视图)		型号类型: LGG.0K.P04.CLL
APPROVED (审核)		DATE(日期)		UNIT(单位)	MM	PART NO. 0K4-core socket 名称: 0K4芯插座
REVISIONS				MATERIAL (材料)		DWG NO.:
www.helloxkb.com www.helloxkb.cn			XKB INDUSTRIAL PRECISION CO.,LIMITED			WEIGHT(重量) SHEET(表) REVISION(修订)
						1/1 A0