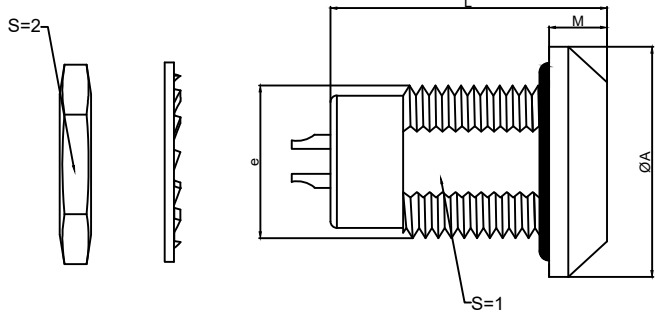


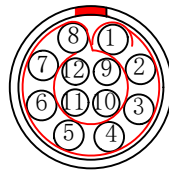
# 1.View and size(视图及尺寸)

| Main technical indicators(主要技术指标) |   |
|-----------------------------------|---|
| 1.Mating (插拔次数)                   | 5000  |
| 2.Working Temperature (温度)        | -55~+150 °C   |
| 3.IP Rating (防护级别)                | IP 54   |
| 4.Diameter of socket end(插合端直径)   | ø0.7  |
| 5.Testing Voltage (测试电压)          | 1250V   |
| 6.Working Voltage (工作电压)          | 1350V   |
| 7.Rated Current (额定电流)            | 7A  |
| 8.Shell material(壳体材质)            | Brass (chromium plating)/(nickel plating) fixation ring/<br>黄铜 (镀铬) /(镀镍) 固定圈 |
| 9.Pin Material(插针材料)              | Copper alloy gold plating(铜合金镀金)  |
| 10.Insulator material(绝缘体材质)      | PPS   |

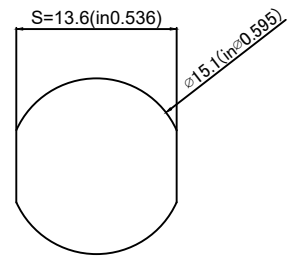


|    | A      | L      | E     | M      | S1     | S2     |
|----|--------|--------|-------|--------|--------|--------|
| MM | 20     | 28.0   | M15*1 | 4      | 13.5   | 17     |
| in | 0.7874 | 1.1024 |       | 0.1575 | 0.5315 | 0.6693 |

| Sum up(总结)                  |  |
|-----------------------------|--|
| Series(系列)                  | B  |
| Shell style/model (外壳样式/型号) | LGG:Fixed receptacle, nut fixing, watertight or vacuum-tight/ 固定插座, 螺母固定, 水密或真空密 |
| Button (按键)                 | A button(一个按键)   |
| Termination type (终止类型)     | Mother solder tin(母焊锡)   |
| Line diameter awg(线材直径)     | 30-22AWG   |
| Cable diameter ø (电缆直径)     | ø1.4-9.9MM   |
| Match plug(匹配插头)            | TGG.2B.P12.CLAD52H   |

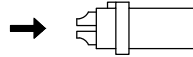


Welded surface (焊接面)

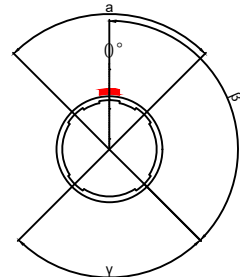


Pane hole size (面板开孔尺寸)

| Location pin combination(定位销组合) |                                   |           |                         |
|---------------------------------|-----------------------------------|-----------|-------------------------|
| (编号) Number                     | Number of positioning pins(定位销数量) | Angle(角度) | Series(系列)-2B           |
| G                               | One(1)                            |           | (Zero degrees)0°        |
| A                               | Two(2)                            | A         | Thirty degrees(30°)     |
| B                               | Two(2)                            |           | Forty-five degrees(45°) |
| C                               | Two(2)                            |           | Sixty degrees(60°)      |
| D                               | Two(2)                            | γ         | 95 degrees (95°)        |
| E                               | Two(2)                            | β         | 120 degrees(120°)       |
| F                               | Two(2)                            |           | 145 degrees(145°)       |
| J                               | Two(2)                            | A         | 37.5degrees(37.5°)      |
| K                               | Two(2)                            |           | 52.5degrees(52.5°)      |
| L                               | Two(2)                            |           | γ                       |



(Welded mother adhesive core) 焊接型母胶芯



Positive view of the socket (插座正视图)

**LG G.2B.P12.C L L**

- Model(型号)
- Positioning pin(定位销)
- Series(系列)
- Needle core configuration(针芯配置)
- Outer casing(外壳)
- Insulator(绝缘体)
- Needle core(针芯)

|        | A      | B      | C√     | ANGLE   |       |
|--------|--------|--------|--------|---------|-------|
| 5-10   | ±0.02  | ±0.05  | ±0.1   | 0°-30°  | ±0.1° |
| 50-100 | ±0.1   | ±0.15  | ±0.2   | 61°-90° | ±0.5° |
| 50-100 | ±0.15  | ±0.2   | ±0.25  |         |       |
| 100-   | ±0.15% | ±0.20% | ±0.25% |         |       |

|                                  |  |          |                                      |               |          |  |
|----------------------------------|--|----------|--------------------------------------|---------------|----------|--|
| DESIGNED (设计)                    |  | DATE(日期) |                                      | SCALE(比例)     | N/A(不适用) | MODEL TYPE<br>型号类型: LGG.2B.P12.CLL       |
| CHECKED (校对)                     |  | DATE(日期) |                                      | VIEW(视图)      |          | PART NO. 2B12 core socket<br>名称: 2B12芯插座 |
| APPROVED (审核)                    |  | DATE(日期) |                                      | UNIT(单位)      | MM       | DWG NO.:                                 |
| REVISIONS                        |  |          |                                      | MATERIAL (材料) |          |  |
| www.helloxkb.com www.helloxkb.cn |  |          | XKB INDUSTRIAL PRECISION CO.,LIMITED |               |          | WEIGHT(重量) SHEET(表) REVISION(修订)         |
|                                  |  |          |                                      |               |          | 1/1 A0                                   |